

## ANNE ARUNDEL HALL



Since construction began July 1, 2014, the new Anne Arundel Hall building structures are in place with roofing and exterior brick work being done. Upon completion, the buildings will become home to International Languages, Anthropology, Center for the Study of Democracy and Historic St. Mary's City's (HSMC) Archaeology Department. The new building will offer an energy efficient geothermal heating system, a rain water capture system to be used for landscape and lawn irrigation, modern classroom technology with interactive smart boards and LCD monitors, and environmentally friendly building and landscaping with a goal to achieve Gold LEED (Leadership in Energy and Environmental Design) standards. Completion of the project is planned for spring 2016.



## RT. 5 TRAFFIC CALMING & SAFETY PROJECT, PHASES I & II

The Rte. 5 Traffic Calming and Safety Project, Phase I is completed. Students can now walk on both sides of Rte. 5 safely thanks to new sidewalks, more lighting and additional crosswalks. Phase II is progressing. A preliminary design for a bike and pedestrian path along Rte. 5 to North Field has been approved and final design is in progress. Once all environment approvals are received, construction could be complete by fall 2016.

## CALVERT HALL & PUBLIC SAFETY



During the summer, Calvert Hall's 2nd floor underwent a transformation. No longer a residence hall, it has become office suites for Alumni Relations, Office of Sumer Lifelong Learning Programs and the Office of Sponsored Research. With Alumni Relations now residing in Calvert Hall, the former Alumni House Building (Old Rectory) was adapted to house the relocation of the Public Safety Office.

## WELCOME!

Please join the Office of Planning and Facilities in welcoming two new employees to campus.

Cyrus Chimento, sustainability fellow, is a recent graduate of SMCM



(spring 2015). Cyrus can be reached at the White House, ext. 2093 or email him at sustainability@smcm.edu.



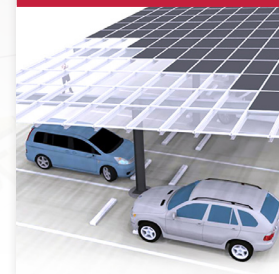
Mark McCormick, assistant director of physical plant, comes to us with

over 23 years of experience. Mark can be contacted at the Physical Plant, ext. 3231 or email him at mwmccormick@smcm.edu.

## CAMPUS CENTER IMPROVEMENTS

The Campus Center underwent some changes and upgrades during the summer. The Campus Book Store's old carpet was replaced with new carpet and the restrooms on both floors underwent a transformation that has allowed for a modern and sleek new look.

## SOLAR POWER



Thanks to a donation from the Biology Department, the Sustainability Office is moving forward with the installation of a solar panel that, when completed, will power the new greenhouse located on the Campus Farm.

The College is looking into future possibilities for installing solar carports at the Guam Parking Lot and/or Parking Lot R next to the baseball field. This project will be financially assisted by a grant from the Maryland Energy Administration.



## BEE HIVES AT THE CAMPUS FARM

The Sustainability Office along with student volunteers started and established two beehives at the Campus Farm to aid in the pollination of the farm's crops. The hives are home to Italian honey bees which are known to be gentle and less likely to swarm. The hives are being tended by local beekeepers and students.

## HEAT PUMPS

The Physical Plant replaced 20 heat pumps at the Crescent Townhouses this summer. The new heat pumps are high efficiency units that will reduce both the College's utility bills and carbon footprint. The project was planned by the Sustainability Office and made possible by funding through GSMRF (Green St. Mary's Revolving Fund).

## ADDITIONAL IMPROVEMENT PROJECTS

To see a list of other planned projects or projects that have been completed for this academic year, please visit the Office of Planning and Facilities website. (Non-Capital Status Report)