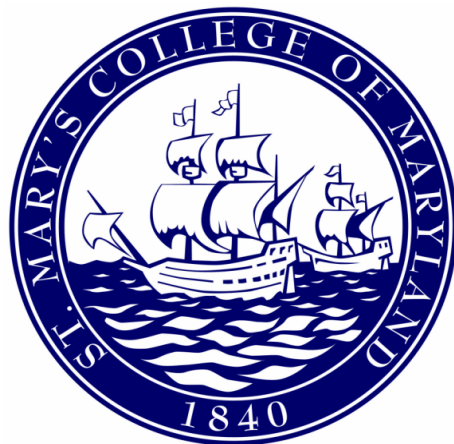


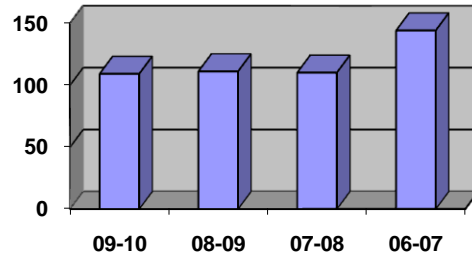
# Judicial Summary



2010 - 2011

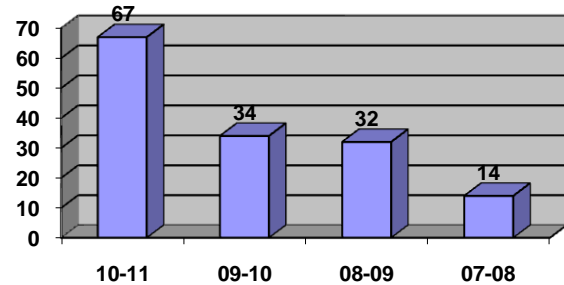
## 2010-2011 Student Judicial Board Cases

	<u>Fall</u>	<u>Spring</u>	<u>Total</u>
Monday Night	20	21	41
Tuesday Night	14	13	27
Friday Hearing	21	19	40
<b>Total</b>	<b>55</b>	<b>53</b>	<b>108</b>



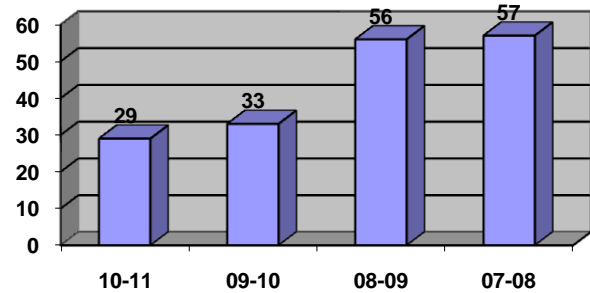
## 2010-2011 Administrative Hearings

	<u>Fall</u>	<u>Spring</u>	<u>Total</u>
Bayless	0	1	1
Clune-Kneurer	0	3	3
Gilbert	2	5	7
Goldwater	4	8	12
Howard	0	1	1
Ogundele	5	7	12
Realbuto	1	2	3
Schroeder	4	6	10
Smolinsky	1	1	2
Tidwell	4	6	10
Young	3	3	6
<b>Total</b>	<b>24</b>	<b>43</b>	<b>67</b>



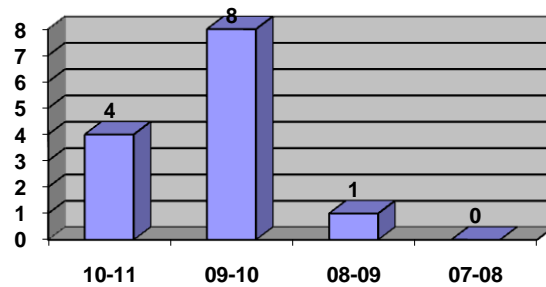
## Case Resolution Meetings

	<u>Fall</u>	<u>Spring</u>	<u>Total</u>
Smolinsky	4	0	4
Neill	11	14	25
<b>Total</b>	<b>15</b>	<b>14</b>	<b>29</b>



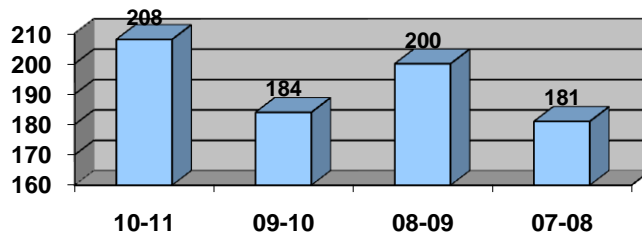
## Other Hearings

	<u>Fall</u>	<u>Spring</u>	<u>Total</u>
College Judicial Board	2	1	3
Sexual Assault Hearing	1	0	1
<b>Total</b>	<b>3</b>	<b>1</b>	<b>4</b>



## **Total Hearings**

(Student Judicial Board, Case Resolution Meetings, College Judicial Board, Sexual Assault Hearing Board, Administrative Hearing)



## **2010-2011 Code Violations**

	<u>Fall</u>	<u>Spring</u>	<u>Totals</u>	<u>09-10</u> <u>Totals</u>	<u>08-09</u> <u>Totals</u>	<u>07-08</u> <u>Totals</u>
A - Published College policies	68	100	168	73	82	34
B - Federal, state laws	7	2	9	11	1	7
C2 - False information	9	6	15	23	24	13
C3 - Forgery, alteration, or misuse of	0	0	0	0	1	1
D - Disruption	0	0	0	0	0	1
E - Offensive, Threatening, Endangering Conduct	27	22	49	2	13	1
E1 - Physical or Sexual Assault	0	0	0	0	6	19
E2 - Verbal, mental abuse	0	0	0	0	4	6
E3 - Hazing	0	0	0	0	0	5
F - Destruction, theft, misuse of property	28	6	34	24	17	21
G - Failure to comply	36	23	59	21	27	19
H - Tampering w/ fire equipment	2	4	6	12	25	2
I - Unauthorized entry, use of keys	0	0	0	2	7	7
J1 - Controlled substance	31	29	60	47	65	67
J2 - Alcohol policy	67	85	152	87	124	151
K - Weapons, explosives	10	5	15	4	3	12
L - Disorderly conduct	19	30	49	24	34	45
M4 - Failure to complete sanction	2	36	38	11	36	5
N - Sexual assault	1	0	1	1	0	0

<u>Location</u>	<u>Fall</u>	<u>Spring</u>	<u>10-11</u> <u>Totals</u>	<u>09-10</u> <u>Totals</u>	<u>08-09</u> <u>Totals</u>
Anne Arundel		1	1		
Athletics and Recreation Center	1	6	7	1	1
Calvert Hall	2	4	6	2	3
Campus Center	1	1	2	1	3
Caroline Hall	7	10	17	14	19
College Drive	0	1	1	2	0
Daugherty-Palmer Commons	0	1	1	1	5
Dorchester Hall	16	18	34	26	16
Dorm Circle	0	1	1		
Glendening	0	1	1		
Goodpastor Hall	0	0	0	0	0
Grounds	0	1	1		
HSMC	1	0	1		
Judicial System	0	36	36		
Kent Hall	0	1	1	0	0
Lewis Quadrangle	15	11	26	13	15
Mailroom	0	0	0	0	1
Mattapan Rd.	0	1	1	1	0
Montgomery Hall	0	0	0	1	3
Morsell	0	1	1		
Network	0	3	3		
Northern Crescent	2	2	4		
Not Applicable	3	0	3	12	33

Off Campus	0	1	1		
Outside	12	1	13	35	24
Parking Lot A	0	1	1		
Parking Lot M	1	0	1		
Parking Lot N	0	0	0	1	0
Parking Lot P	0	0	0	0	0
Parking Lot R	2	0	2	2	2
Parking Lot T	0	1	1	1	2
Parking Lot X	0	0	0	0	1
Parking Lot Z	3	1	4	4	3
Prince George Hall	5	16	21	5	13
Public Safety	1	0	1	0	2
Queen Anne Hall	5	9	14	11	8
River Center	0	1	1	0	0
Rosecroft Rd.	0	0	0	1	0
Route 5	0	2	2		
Schaefer Hall	0	2	2	0	0
Southern Crescent	1	0	1		
State House	0	0	0	0	2
Townhouses	10	1	11	15	13
Trinity Church	1	0	1	1	5
Trinity Church Rd	0	0	0	1	1
Trueschler	0	1	1		
Waring Commons	7	7	14	14	9

## Outcomes

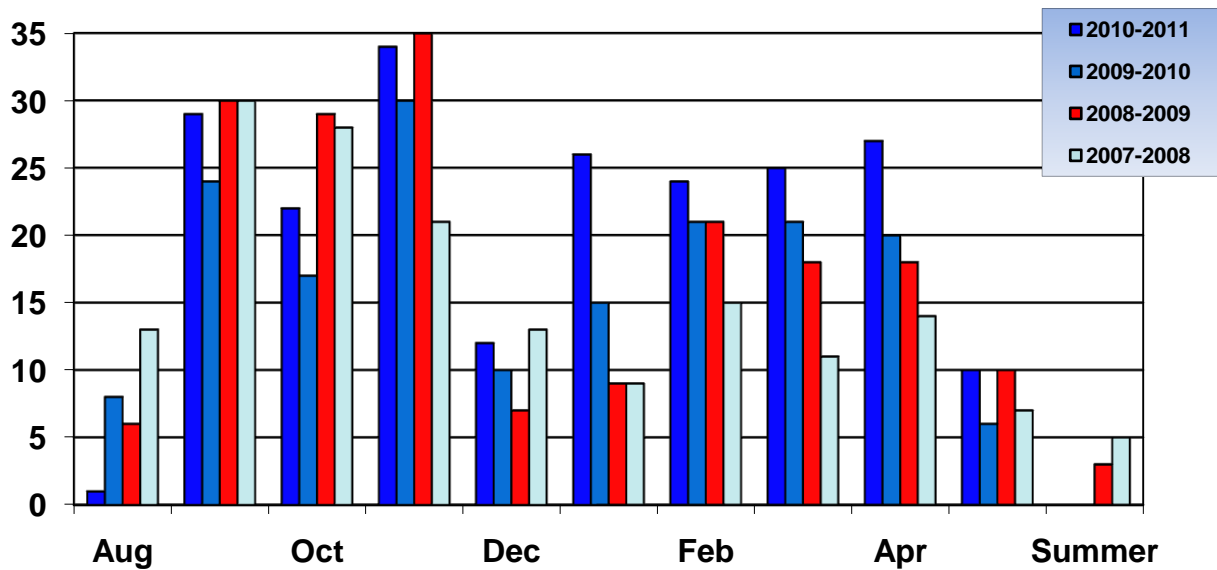
<u>2010-2011</u>	<u>Responsible</u>	<u>Not Responsible</u>	<u>Mixed</u>	<u>Pending</u>
Male	163	57	57	7
Female	67	16	11	4
<b>Totals</b>	<b>230</b>	<b>73</b>	<b>68</b>	<b>11</b>

<u>2009-2010</u>	<u>Responsible</u>	<u>Not Responsible</u>	<u>Mixed</u>	<u>No Finding</u>
Male	116	55	23	0
Female	54	18	10	0
<b>Totals</b>	<b>170</b>	<b>73</b>	<b>33</b>	<b>0</b>

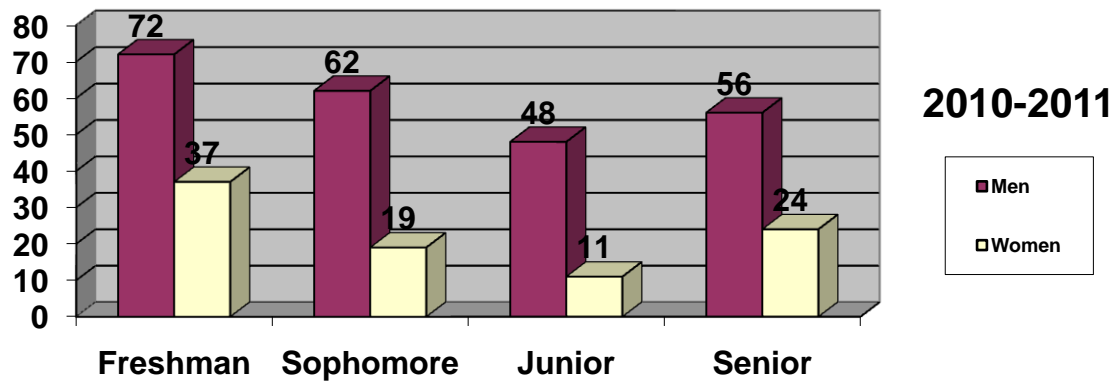
<u>2008-2009</u>	<u>Responsible</u>	<u>Not Responsible</u>	<u>Mixed</u>	<u>No Finding</u>
Male	146	39	21	1
Female	68	31	8	0
<b>Totals</b>	<b>214</b>	<b>70</b>	<b>29</b>	<b>1</b>

<u>2007-2008</u>	<u>Responsible</u>	<u>Not Responsible</u>	<u>Mixed</u>	<u>No Finding</u>
Male	153	21	29	0
Female	68	8	2	0
<b>Totals</b>	<b>221</b>	<b>29</b>	<b>31</b>	<b>0</b>

## Cases by month



## Class and Gender



## Total Repeat Offenders

### 2010-2011

	<u>1 Case</u>	<u>2 Cases</u>	<u>3 Cases</u>	<u>4 Cases</u>
Male	190	40	6	2
Female	78	10	1	

### 2009-2010

	<u>1 Case</u>	<u>2 Cases</u>	<u>3 Cases</u>	<u>4 Cases</u>
Male	100	29	12	3
Female	58	6	3	0

**2008-2009**

	<u>1 Case</u>	<u>2 Cases</u>	<u>3 Cases</u>	<u>4 Cases</u>	<u>5 Cases</u>	<u>6 Cases</u>
Male	166	32	7	1	0	1
Female	90	13	4	0	0	0

**2007-2008**

	<u>1 Case</u>	<u>2 Cases</u>	<u>3 Cases</u>	<u>4 Cases</u>	<u>5 Cases</u>
Male	169	25	8	1	0
Female	72	6	0	0	0

**Appeals**

<u>2010-2011</u>	<u>Granted</u>	<u>Denied</u>	<u>Revised</u>	<u>Remanded</u>	<u>Totals</u>
Judicial Board	0	7	9	0	16
Admin. Officer	0	3	2	1	6
College Board	0	1	1	0	2
Sexual Assault	0	1	0	0	1

<u>2009-2010</u>	<u>Granted</u>	<u>Denied</u>	<u>Revised</u>	<u>Remand</u>	<u>Totals</u>
Judicial Board	0	10	15	0	25
Admin. Officer	0	1	0	1	2
College Board	0	3	1	0	4
Sexual Assault	0	1	1	0	2

<u>2008-2009</u>	<u>Granted</u>	<u>Denied</u>	<u>Revised</u>	<u>Totals</u>
Judicial Board	0	13	10	23
Admin. Officer	1	2	1	4
Sexual Assault	1	0	0	1

<u>2007-2008</u>	<u>Granted</u>	<u>Denied</u>	<u>Revised</u>	<u>Totals</u>
Judicial Board	1	13	12	26
Admin. Officer	1	0	2	3

**Sanctions Issued**

	<u>Fall</u>	<u>Spring</u>	<u>2010-2011</u> <u>Total</u>	<u>2009-2010</u> <u>Total</u>	<u>2008-2009</u> <u>Total</u>	<u>2007-2008</u> <u>Total</u>
Alcohol Education	37	40	77	66	79	97
Alcohol evaluation	0	0	0	0	0	1
Anger Management Classes	0	0	0	1	0	0
Apology letter	21	10	31	32	18	10
Athletics Event Restriction	0	0	0	2	1	0
Attend Lecture	0	0	0	0	0	0

BASICS	0	0	0	0	0	2
Behavior Contract	0	2	2			
Brochure	0	0	0	0	2	0
Bulletin Board	0	0	0	2	9	0
Campus Facility Restriction	0	0	0	2	0	0
Coach Notification	0	0	0	0	0	2
Cole Cinema Restriction	0	0	0	1	0	0
College Policy Research	0	0	0	1	0	0
Community Service	51	63	114	66	76	83
Community Service schedule	0	0	0	0	1	0
Conflict Resolution Training	0	0	0	1	0	0
Cooking Restriction	0	0	0	2	0	0
Counseling	0	0	0	0	0	3
Disciplinary Probation	50	50	100	90	91	92
Drug assessment	0	0	0	0	0	0
Drug education	13	15	28	34	56	2
Educational project	0	0	0	0	0	2
Expulsion	0	0	0	1	0	0
Fine	0	0	0	0	4	3
Flyers	0	6	6	2	0	0
Housing revocation	6	0	6	13	3	10
Interview	0	5	5			
Loss of computer usage	0	0	0	0	0	1
Loss of car on campus	0	0	0	3	0	0
Loss of guest privileges	1	33	4	1	0	0
Loss of network usage	4	1	5	3	0	1
Mandated Assessments	7	6	13	16	6	1
MAPP presentation	0	0	0	0	0	1
Mediation	0	1	1			
Mtg. w/George Waggoner	1	0	1			
Mtg. w/ Judicial coordinator	0	0	0	0	1	0
Mtg. w/ counselor	0	0	0	0	2	0
Notification of Kelly						
Smolinsky	0	0	0	0	0	1
Pamphlet	0	0	0	1	0	2
Paper	28	27	55	76	35	30
Parent notification	20	20	40	49	59	70
Parking restriction	2	0	2			
Point News/Other Article	0	0	0	0	1	0
Poster	0	0	0	2	5	0
Purchase Meal Plan	0	0	0	1	0	0
RA Rounds	0	0	0	1	0	0
Reference Letters	0	0	0	1	0	0
Remove restricted item	1	0	1	0	1	0
Restitution	6	3	9	13	11	11
Residence hall restriction	2	6	8	6	4	3
ResLife.net	0	0	0	0	0	14
Roommate Agreement	0	0	0	2	0	0
Safe Ride Restriction	0	0	0	1	0	0
Senior Gala Restriction	0	0	0	1	0	0
Senior Week Restriction	0	1	1	4	3	1
Sexual Harassment						
Counseling	0	0	0	1	0	0
State vehicle restriction	0	0	0	0	0	2
Substance Abuse Group	0	3	3			

Suspension	4	1	<b>5</b>	<b>11</b>		<b>2</b>		<b>5</b>	
Warning	93	72	<b>165</b>	<b>131</b>		<b>135</b>		<b>149</b>	
Weekly check-in w/adviser	0	0	<b>0</b>	<b>0</b>		<b>0</b>		<b>1</b>	
World Carnival restriction	0	0	<b>0</b>	<b>0</b>		<b>0</b>		<b>1</b>	