

# SMCM Staff News

## Fun Feature: Who is the most famous person you've ever met?

**Dennis Hite, Physical Plant** - He went to see the Globetrotters and his daughter was pulled from the sidelines to come out to do tricks and dance with them.

**Barbara Cooke, Physical Plant** - Years ago she took some students she was teaching to a Michael Jackson concert. After the concert they got to go backstage and meet him.

**Sandy Robbins, Office Associate** - I met Chief Justice Earl Warren (and have the picture to prove it!) while in high school. While working at Immigration & Naturalization, I met Mick Jagger (yep, the one and only) and his then wife, Bianca, when they came to plead their case to have Keith Richards admitted after a drug issue abroad.

**Angie Draheim, Academic Program Support Coordinator & Departmental Web Specialist for Psychology** - I've never met anyone famous but I am very distantly related to Imelda Marcos, a first lady of the Philippines for over two decades who became infamous for her spending habits and enormous shoe collection (over 1,000 pairs!). My husband (who is distantly related to Betsy Ross) would say I have too many, but at least it's not THAT many. :)

*Next Fun Feature Question:  
Sum of Summer in 5 words!*



*Above: President Jordan and Beth Byrd presented the Joe Carroll Award to Sam Goddard, a general trades mechanic with the Physical Plant, at Awards Convocation on April 22, 2016. Congratulations, Sam!*

## this issue

- Statement of Inclusion **P.1**
- Staff Spotlights & New Staff **P.2**
- Staff Milestones **P.3**
- Staff Senate Committees **P.4**
- Upcoming Events **P.4**

## Staff Senate Statement of Inclusion May 2, 2016

The staff of St. Mary's College of Maryland represents a large and diverse population that supports students in a variety of ways. Staff members are deeply troubled by recent events in a community that values respect, integrity, and trust.

We take great pride in our work, especially our work for the students of St. Mary's, and feel strongly that it is our mission to mentor, guide, and support our students in their daily lives as they learn and grow while attending the institution. Above all, we strive to reflect an atmosphere that promotes respect to both the people and the place that is St. Mary's.

Staff has joined in the college discussion on how we can, together, embrace the St. Mary's Way to make our community a more inclusive environment for all individuals. We want all students and the campus as a whole, to know that while we do not have all the answers, we remain steadfast in our goal to peacefully and productively engage in the conversation about how SMCM can be its most inclusive community possible.



## Hats Off to Our Incredible Staff!

### Did you know...

**Alan Lutton**, Library Office Administrator, was presented with the LGBTQ Advocacy Award at the Lavender Graduation ceremony on April 8, 2016.

**Michael Cummings**, Director of Admissions, graduated from Leadership Southern Maryland, on May 6, 2016.

**Clint Neill**, Assistant Director of Student Activities, was recently recognized at the SGA's Awards Banquet with the Club Adviser of the Year award. This award is given each year to a member of the faculty or staff who has given up their time to work closely with an SGA sponsored club or organization.

Public Safety Officer **Lori Brasko** was recognized by St. Mary's County Sheriff's Office with a St. Mary's County Law Enforcement Officer Appreciation Award. Each agency in the county nominates an officer and this year SMCM nominated Officer Brasko.

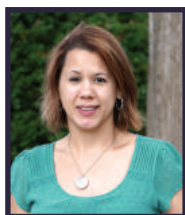
**Kayla Pratt**, OIT web developer, has her own coffee business! She roasts and sells her own small-batch beans online at [wicomicocoffee.com](http://wicomicocoffee.com)

**Taylor Lampasona**, double major in ILC (Chinese) and economics, graduated with the SMCM Class of 2016! You may recognize him as a package/mail deliverer for physical plant.



## Staff Spotlight: Angie Draheim '03

Academic Program Support Coordinator & Departmental Web Specialist for Psychology



**How long have you been at SMCM?** Since July '04 so just about 12 years.

**What path led you to St. Mary's?** I really enjoyed being a psychology major. The courses were interesting and the faculty were great. While my May '03 graduation was somewhat bittersweet, I excitedly had plans to complete a semester of student-teaching at the elementary level later that fall. Shortly after graduation, however, a hemorrhage in my brainstem (the second in my lifetime at that point) caused me to reevaluate my career path and find a new one. I wasn't sure where it was leading until, serendipitously in June '04, I found an ad in the local newspaper for an assistant position with the psychology department. Having worked at the College (in the Office of Academic Services) throughout the four years I attended St. Mary's and therefore knowing I would enjoy the work environment, I was determined to get the job and ecstatic when it was offered to me.

**What do you do by day?** I help coordinate Psychology SMPs, manage the SMP budget, serve as administrator for the online experiment management system we use to organize our two research pools, work with our students and faculty conducting studies using human participants to figure out the traditional and online study logistics (which can get pretty tricky) and solicit participants, maintain the dept's website and social media pages on Facebook, publicize events, keep in contact with alumni for networking opportunities for our current students, troubleshoot on-demand technology issues/needs, review and print large format posters, and work on various projects (e.g., organizing the collection of assessment materials/data). I am also vice president of the Staff Senate and president of the Zeta chapter of Phi Beta Kappa so I take care of things related to those roles.

**What do you do with your evenings/weekends?** Spend time with family and friends, read, catch up on Netflix or Hulu shows, scrapbook, chores, errands, bake, and decorate cakes. When the weather allows, I enjoy taking walks.



**What is your favorite off-campus lunch spot?** I'm a big fan of Asahi and Tearthful Café in San Souci Plaza but my favorite place is Dameron Daycare just at the end of Mattapanay Road because I can occasionally drop in to have lunch with my four-year-old daughter, Lorelei. I've learned to pack two yogurts since she always eats 3/4 of mine.

**What would colleagues be surprised to find out about you?** I love getting older! Many but not all my colleagues know that I had a third brainstem hemorrhage in early December '15. It was a challenging experience and has some residual challenges (that are thankfully fairly easy to deal with) but I'm just happy to be alive and that I can still do my job. Thanks to everyone who supported me while I was out and transitioning back! If you ever need to know about cavernous hemangiomas, I'm your girl. For those that already knew this fact, I'll throw in that I met my husband, Paul, when we were both 18 and working at Toys R Us in Waldorf, MD.

**What is the most interesting/surprising job you've ever had?** Each year here bring new students, new faculty and new challenges so it stays the most interesting despite its cyclical nature. I sincerely can't imagine working anywhere else. My volunteer work for the Human Rights Standing Committee of Compass, Inc. (an agency in MD that provides direct support and assistance to individuals with intellectual and developmental disabilities) has been the most surprising and eye-opening.

## Welcome to St. Mary's!

Business Affairs	Margherita A. Brown, Accounts Receivable Specialist
Dean of Faculty	Michael R. Wick, Incoming Provost/Dean of Faculty
Planning & Facilities	Robert [Trey] Clements, III, Groundskeeper I
Human Resources	Shannon K. Jarboe, Director of Human Resources
International Education	Sahra Grube, Office Administrator
Inst. Advancement	Lauren C. Taylor, Assistant Director Alumni Relations Lauren K. Sampson, Director Corporate and Foundation Relations
Office of Information Technology	Joshua C. Wilcox, IT Support Technician William K. Looney, IT Support Technician
Physical Plant	Aaron H. Miles, Manager of Housekeeping Services
Public Safety	Angelene T. Colas, PS Officer/Non-Commissioned Alexander V. Cosenze, PS Officer/Non-Commissioned

## Monthly Staff Recognition Award Winners

*Nominate a worthy staff member today! Winners receive 5 FREE tickets to the Great Room. Nomination forms are available in department offices and [online](#). They are due the 3rd Friday of every month to Beth Byrd (eabyrd@smcm.edu or 3rd floor of Calvert Hall).*

### January 2016: Steve Gregory, grounds superintendent

"Steve went above and beyond to ensure that our '175th' campus photo/video project was successful, from marking and painting out the numbers on the grass, to securing the bucket truck and figuring out the proper height and location of the platform to capture the image without shadows from the truck, to working with the Marketing and Communications team on banner placements campus wide." "The entire project turned out very professional looking and were a helpful part of creating a sense of community."

### February 2016: Lori Brasco, public safety officer

"Lori's quick thinking and decision to act without regard for her own safety, saved an automobile accident victim's life." "She pulled the driver from the burning vehicle onto the roadway and away from the vehicle keeping him safe and calm while awaiting EMS."

### March 2016: Jim Cranmer, assistant athletics director

"Jim's leadership and commitment to St. Mary's is evident by the little details he takes care of on a daily basis. His attention to detail, concern for the success of each student athlete, and hands on involvement with each athletic program results in the positive, high-energy atmosphere that is shared amongst the coaches and ultimately passed on to the athletes and student body." "Jim has been a great mentor to each new coach as they have come up to speed on their new positions, providing assistance with scheduling, budgeting, fundraising, recruiting, etc."

### April 2016: Ray Yarber, housekeeper

"Ray always shows up for work and works hard keeping the buildings clean. It is a thankless job at times but he doesn't complain. Ray considers SMCM his family and is always willing to lend a hand to help his co-workers get a project done."

### May 2016: Dorothy Reed, housekeeper

"Dorothy Reed - Dorothy takes great pride in making the Calvert Hall lobby sparkle, which is hard work since the floor tiles are 100 years old. It makes a great first impression to guests when they see the shiny brass knobs and clean entryway."

## Congratulations!

Public Safety Officer **Lori Brasco** has been selected by the IACLEA Awards and Recognition Committee to receive the 2016 IACLEA Award for Valor. Officer Brasco will be recognized at this year's Annual Conference in Phoenix, during the Opening Ceremonies on Saturday, June 25, 2016.

**Sahra Grube** is now the Office Administrator for the Office of International Education at SMCM. Sahra comes to the IE Office from the Physical Plant where she held the position of Receiving and Dispersal Clerk since 2008.

**Josh Wilcox** is a new IT Support Technician for SMCM. Up until now, Josh Wilcox has been employed in the Office of Information Technology as a student and contractual Desktop Support Technician.

Congratulations to ALL who completed the St. Mary's Historic Half-Marathon & 5k, including the following staff/faculty who were top finishers:

#### **Half Marathon - Male Staff/Faculty**

1. Dave Kung 1:39:55
2. Chris Coons 1:49:52
3. Dave Sushinsky 1:52:02

#### **Half Marathon - Female Staff/Faculty**

1. Katie Newkirk 1:55:37
2. Amy Steiger 2:13:24
3. Angela Johnson 2:13:30

#### **5K Male - Male Staff/Faculty**

1. Alun Oliver 22:20

#### **5K - Female Staff/Faculty**

1. Emily Bzdyk 29:51
2. Aileen Bailey 30:57
3. Joanne Goldwater 33:12



## St. Mary's by the Numbers

**4** - the number of cakes raffled off as prizes at the Senate's Spring Staff/Faculty Luncheon on March 17th. They were won by Mandy Reinig, Kathy Lewin, Cathy Jones and Mac McClintock. Thank you to Angie Draheim & Lisa Smith for the tasty treats!



**300** - the number of adorable cupcakes made by Lisa Smith. Which one did you try? (There were sheep, baby chicks, chickens, rabbits, rainbow cupcakes, bird nests, and bunny heads!)

**763** - the number of jellybeans in the jar.



**30** of pizzas served up with a smile by Mary Grube, Steve Gregory, Kelley Hernandez, & Francis Raley.



## Staff Senate Committees

Any staff member may join Staff Senate committees– contact chairs if you are interested!

### Professional Development

Tommy Cable (Chair), Ross Conover, Jim Cranmer, Kelley Hernandez, Alan Lutton, Kate Shirey, James McGuire

### Elections

Angie Draheim (Chair), Kelley Hernandez, Derek Young

### Communications

April Ryan (chair), Sahra Grube, Lisa Youngborg, Lee Capristo

### Awards & Recognition

Beth Byrd (Chair), Dana Burke, Kathy Lewin, Sherrie Wooldridge, Sahra Grube, Lisa Youngborg, Robin Bates\*, Unzila Chowdhury\* (\* Joe Carroll Award Only)

### Bylaws

Dan Schell (Chair), Derek Young, Rob Maddox

### Social Connections

Ben Casto (Chair), Faye Graves, Steve Gregory, Mary Johnston, Francis Raley, Stephanie Somerville



Staff enjoying the SMCM basketball games on February 3rd for the Staff & Faculty Appreciation Night

## Upcoming Events

**Staff Senate Meetings.** Any staff member may attend Staff Senate meetings so mark your calendars and plan to join us! All senate meetings 10 am-12 pm in the Glendening Annex unless otherwise noted. For 2015-16: 6/1, 6/22. In 2016-17: 7/ 14, 8/3, 8/24, 9/14 [Staff Association Meeting], 10/5, 10/26, 11/16, 12/7

**Faculty & Staff End of the Year Picnic.** The Office of the President will be hosting the annual End of the Year Picnic on the May Russell Lodge Lawn (rain or shine!) on **Tuesday, June 7th, 2016** from 11:00am - 2:00pm. RSVP by Tuesday, May 31st.

**Alumni Weekend.** The largest alumni celebration of the year, over 1,000 alumni return to their home on the river to reunite with old friends, learn about new College developments, and rediscover the beauty of the St. Mary's campus. **Thursday, June 9th - Sunday, June, 12th, 2016.** Visit <http://goo.gl/EUJzpW> for schedule of events! Sign up to volunteer at [ow.ly/4nn3yt](http://ow.ly/4nn3yt) !

**Golden & Beyond Alumni Reunion.** Golden & Beyond Reunion is similar to Alumni Weekend, but more intimate and designed specifically for our alumni who graduated 50 years ago or more. **Thursday, June 23 - Saturday, June 25, 2016.** For schedule of events, visit <http://goo.gl/NhRyx2>.

**River Concert Series.** Designed to provide the citizens of Southern Maryland with high-quality, professional performances throughout the summer, enriching the cultural offerings of our region while raising the profile of Southern Maryland throughout the state. All concerts begin at 7:00 p.m. on the Townhouse Greens: **Friday, June 17; Friday, June 24; Friday, July 1 - Concert & Fireworks!; Friday, July 8; Friday, July 15; Friday, July 22**

## Let Us Hear From You!

Email your suggestions, questions, or concerns to [mkgrube@smcm.edu](mailto:mkgrube@smcm.edu)

OR [complete the anonymous feedback form](#) available on our web sites.

Check out our websites: [www.smcm.edu/staff](http://www.smcm.edu/staff)