

ST MARY'S
COLLEGE of MARYLAND

The National Public Honors College



SPRING 2023

**STRONG WOMEN
THROUGH THE AGES**

ST. MARY'S COLLEGE
of Maryland



The **MULBERRY TREE**

SPRING 2023, VOL. XLIV, NO. 2

www.smcm.edu/mulberrytree

Editor

Lee Capristo

Alumni News Editor

Jeanette Warren '20

Design

Jensen Design

Editorial Board

Karen Anderson,

Molly McKee-Seabrook '10,

Karen Raley '94,

Olivia Sothoron '21

Chuck Steenburgh

Publisher

Office of Institutional Advancement

St. Mary's College of Maryland

47645 College Drive

St. Mary's City, Maryland 20686

The Mulberry Tree is published by St. Mary's College of Maryland, Maryland's public honors college for the liberal arts and sciences. It is produced for alumni, faculty, staff, trustees, the local community, and friends of the College.

The magazine is named for the famous mulberry tree under which the Calvert colonists signed a treaty of friendship with the Yacocomico people and on the trunk of which public notices were posted in the mid-1600s. The tree endured long into the 19th century and was once a popular meeting spot for St. Mary's College students.

The illustration of the mulberry tree on the cover was drawn in 1972 by Earl Hofmann, artist-in-residence when St. Mary's College President Renwick Jackson launched the magazine.

Copyright 2023

The opinions expressed in *The Mulberry Tree* are those of the individual authors and not necessarily those of the College. The editor reserves the right to select and edit all material.

Manuscripts and letters to the editor are encouraged and may be addressed to Editor, *The Mulberry Tree*, St. Mary's College of Maryland, 47645 College Drive, St. Mary's City, MD 20686.

Photographs and illustrations may not be reproduced without the express written consent of St. Mary's College of Maryland.

CONTENTS

SPRING 2023

ST. MARY'S COLLEGE OF MARYLAND

July 2022 — June 2023

ALUMNI COUNCIL

Executive Board

Alice Arcieri Bonner '03,
president
Kate Fritz '04, *exec. vice president*
Sean Floyd '06, *vice pres. of operations*
Sara Kidd Shanklin '11,
secretary
Kevin Roth '93,
parliamentarian
John Ahearn '76, *treasurer*
Erin O'Connell '91, *vice pres. of chapter activities*
Michele Shipley '92, *vice pres. of affinity networks*

Elected Voting Members

Aman Afash '16
Matt Baden '11
Kenneth Benjes '11
Thomas Brewer '05
Paul Broccolina '00
Kelsey Bush '94
Geoff Cuneo '10
Valerie Gregorio '19
Angie Harvey '83
Barbara Kimmelshue-
Kearns '63
Hans Lemke '93
Michael Mellinger '18
Kate Monahan '12
Lauren Payne '09
Lindsey Siferd '13
Edward Sirianno '82

Student Member

Imani Kayeye '23

Regional Chapter

Presidents

Annapolis: Vacant

Baltimore Metro:

Vacant

Boston Regional:

Eunice Akins-Afful '95

California Bay Area:

Vacant

Chicago Regional:

Vacant

Denver Regional: Vacant

New York City Regional:

John Haltiwanger '10

Philadelphia Regional:

Ian Murphy '08

Southern Maryland:

Cathy Hernandez Ray '77

Washington, D.C. Metro:

Vacant

Western Maryland: Vacant

Affinity Network Chairs

Black Alumni:

Janssen Evelyn '01

BOARD OF TRUSTEES

Chair

Susan Lawrence Dyer

Vice Chair

Paula Collins

Treasurer

John Chambers
Wobensmith '93

Secretary

Nicolas Abrams '99

Trustees

Carlos Alcazar
Anirban Basu
John Bell '95
Alice Arcieri Bonner '03
Alumni Association
Peter Bruns
Donny Bryan '73
Peg Duchesne '77
Judith Fillius '79
Elizabeth Graves '95
Gail Harmon
Melanie Hilley '92
Sven Erik Holmes
Steny H. Hoyer
Glen Ives
Lawrence Leak '76
Doug Mayer '04
Jesse Price '92
Brayan Ruiz-Lopez '24
Student Trustee
Aaron Tomarchio '96
Danielle Troyan '92
Raymond Wernecke

PRESIDENT

Tuajuanda C. Jordan, PhD



[PAGE 8]



[PAGE 13]



[PAGE 16]

OPPOSITE:

Photo from the College's collection

FEATURES

PAGE 8

Powerful Princesses

Betül Başaran's book project on the legacy and impact of Princesses Niloufer (1916-1989) and Durrushehvar (1914-2006) was supported by a Fulbright Global Scholar Research award in 2021.

PAGE 13

Elle Cosimano is Killing It

Lindsey "Elle" (Plaut) Cosimano '95 traded a career in real estate for writing. Now she's a New York Times bestselling author.

PAGE 16

W.O.A.W. is Wow!

Sarah Malena and her ancient history colleagues use the style of a graphic novel to engage audiences with women of the ancient world.

DEPARTMENTS

2 President's Letter

3 College News

22 Alumni Connection

28 From the Archives

COVER:

Elle Cosimano '95 doing her best impression of Finley Donovan

AS I HAVE BEEN REPORTING TO YOU, THE DEVELOPMENT OF THE THIRD STRATEGIC plan of my presidency is well underway. This plan, based on four pillars approved by the Board of Trustees, calls for us to create, empower, build and become (details at www.smcm.edu/president). I look forward to sharing the final Board-approved version in the months ahead and applaud the engagement of students, faculty, staff and community members in the process. This work goes hand-in-hand with the process of self-assessment we are currently undergoing as part of the reaffirmation of our higher education accreditation.

This spring our marine science program partnered with the Chesapeake Biological Laboratory in Solomons, Maryland. And with the help of federal funding thanks to our Congressman and Trustee Steny Hoyer (details on p. 3), we are renovating our aquatic lab to better serve the needs of students and faculty and ultimately the State. These activities are important to the continuing enhancement of our innovative and distinctive academic identity.

Our newest facility, the Nancy R. and Norton T. Dodge Performing Arts Center, is helping the College become a sought-after and engaged community resource. Sold-out events like Handel's Messiah and the U.S. Navy Band Sea Chanters are evidence that this new center is a valuable asset in the community. More than 7,000 people have attended a diverse array of events since its opening in September 2022.

I was honored to give the invited keynote address to celebrate Maryland Day on March 25 at Historic St. Mary's City and to receive a standing ovation for my talk, "Let the Light Shine and Illuminate the Path to a Brighter Future" (read it at www.smcm.edu/president). On April 15, I spoke as a panelist at the American Council on Education's (ACE) annual meeting on the topic, "Reimagining Presidential Leadership for the Future of Higher Education."

Come to campus on May 13 and celebrate a remarkable global superstar—and our Commencement speaker—as Angélique Kidjo performs in concert at the Dodge Performing Arts Center (tickets at www.smcm.edu/dodge). Join us for a rousing Juneteenth celebration at the fourth annual Mulberry Music Festival on Friday, June 16 with emcee and singer **Carly Harvey '07**. This free festival on the Townhouse Green features the Boneshakers, Oh He Dead, Kevin Howard and headliners The JoGo Project (details at www.smcm.edu/mulberry-music-festival).

It promises to be a lively event.



TUAJUANDA C. JORDAN, PhD
President, St. Mary's College of Maryland

Editor's Note

ELLE COSIMANO '95 HAS PROVIDED ME recent opportunity to indulge my love of a page-turner with her "Finlay Donovan" series (see more on p. 13). I also thrive on a challenge and for that, I'll assign myself a book by Cormac McCarthy.

McCarthy has always been a tough read for me. When my kids were small and needed me nearby as they fell asleep, I sat outside their room reading "The Road" with a flashlight, weeping at human cruelty while being simultaneously awestruck by the craft of the writer to write such a profoundly emotional work. In the article "Subterranean Treasures" by Nicolás Medina Mora in *The Nation* (3/20/23), Mora says McCarthy is a writer "courageous enough to dare to say something about the whole of the human condition" and that in his controversial latest dual release ("Stella Maris" and "The Passenger") McCarthy invites us to "consider hopelessness not just to give us hope but to compel us to make use of it."

How does an analysis of McCarthy connect to the focus of this issue, which is strong women? Google "strong women" and your search engine will immediately serve up lists of lists — 11 traits of strong women, 10 characteristics..., 16 positive character traits..., 13 qualities..., 15 unique characteristics..., 8 vital characteristics... — evidence surely, that collectively, we've not really, conclusively, decided what defines strong women. And like reading McCarthy, it's challenging but worthwhile work to struggle through, toward a better something for all.

Thanks are due to the courageous women of this issue: Elle Cosimano, Betül Başaran and Sarah Malena, whose work uplifts women across the ages. They are role models for emerging powerful women like this magazine's student intern, **Emily Vance '25**, whose debut feature appears on p. 13.

LEE CAPRISTO, *editor*

CAMPUS & COMMUNITY NEWS



Visitors from Washington College in Chestertown, Maryland, experienced the Commemorative to Enslaved Peoples of Southern Maryland on April 7. The Commemorative was featured in the April 2023 cover story, “Art for Social Justice,” in CODAmagazine.

Federal Funds Support SMCM Science Programs

Longtime St. Mary’s College of Maryland Trustee U.S. Rep. Steny Hoyer (D, 5th), in whose district the College lies, recently secured a \$1,000,000 federal appropriation for the College. The funds will support a renovation of the College’s 30-year-old aquatic lab, which

provides critical laboratory and research opportunities for students and faculty in the biology, chemistry and biochemistry and marine science programs. Rep. Hoyer earlier secured an additional \$900,000 appropriation in support of the marine science program. Those funds are supporting the purchase of a purpose-built research vessel and associated equipment to allow students to study the biological, chemical and physical properties of the St. Mary’s River, Lower Potomac River, and Chesapeake Bay.

College Hosts Junior Science and Humanities Symposium

St. Mary’s College of Maryland was the site for the Maryland Regional Junior Science and Humanities Symposium (JSHS) on March 4, 2023 in the Campus Center, which brought high school student participants from across Maryland to present the results of their individual research projects. Sponsored by the Department of Defense and organized in Maryland by The Patuxent Partnership and co-hosted by the Naval Air Warfare Center Aircraft Division (NAWCAD), the JSHS promotes study in the sciences, technology, engineering and mathematics (STEM) fields at the high school level.



Angélique Kidjo to Deliver 2023 Commencement Address

International superstar and goodwill ambassador Angélique Kidjo will be the 2023 Commencement speaker at St. Mary’s College of Maryland on Saturday, May 13, 2023. The five-time Grammy winner will perform in concert at the Nancy R. & Norton T. Dodge Performing Arts Center on the campus later that evening, beginning at 7 p.m. Tickets may be purchased at www.smcm.edu/dodge.



Institutional Advancement Marketing Team Earns Awards

The Institutional Advancement marketing team of St. Mary's College of Maryland earned two gold awards, a silver and a merit in the 38th Annual Educational Advertising Awards. The awards were for the design of the admitted student pocket folder and for the design of the Admission seahawk cutout poster (gold); the program for the Grand Opening of the Performing Arts Center and Learning Commons (silver); and the admission career brochure (merit). These awards add to the more than 35 national awards the IA team has won in the past several years for branding and promotion of the College.

BOARD NEWS

Board Continues Tuition Freeze

The St. Mary's College Board of Trustees approved tuition and fees for the 2023-2024 academic year in their meeting on Feb. 4, maintaining a fourth consecutive year of no increase in tuition. Rates for mandatory fees and room charges will increase by a modest 2%, while board (dining) rates will rise by 4% due to inflation and personnel costs.

Strategic Plan on May Docket

After the Board's approval of the strategic plan pillars and timeline in September 2022, **President Jordan** appointed workgroups for each pillar and a Strategic Planning Steering Committee to oversee and coordinate their efforts. With feedback on the new strategic plan provided by the Board at the Feb. 4 meeting, the groups finalized goals through continued engagement with stakeholders. The president will present a final plan for the Board's approval at the May meeting.

PRESIDENT'S NEWS

For her outstanding leadership in her profession and in the community, **President Tuajuanda C. Jordan** was named to the Daily Record's 2023 Maryland's Top 100 Women. Founded in 1996, Maryland's Top 100 Women recognizes outstanding achievements by women demonstrated through professional accomplishments, community leadership and mentoring.



On March 25, **President Jordan** gave the keynote address at the Maryland Day celebration held at Historic St. Mary's City. Her speech, "Let the Light Shine and Illuminate the Path to a Brighter Future" received a standing ovation and can be read on the president's website at www.smcm.edu/president.

On March 23, **President Jordan** and President Emeritus of the University of Maryland Freeman Hrabowski were invited guests at Bryn Mawr College in Bryn Mawr, Pennsylvania, for the launch of its new series, Advancing Inclusive Excellence.

FACULTY, STAFF & STUDENT NEWS

St. Mary's College of Maryland Professor of History **Christine Adams** and sister and coauthor Tracy Adams, professor of French in the School of Cultures, Languages and Linguistics at the University of Auckland, New Zealand, were featured on the Feb. 14 episode of the "All Things Tudor" podcast. The talk, titled "The Femme Fatale Summit: French Mistresses," provided the opportunity to discuss their joint book, "The Creation of the French Royal Mistress: From Agnes Sorel to Madame DuBarry" (Penn State University Press, 2020).

Professor of Spanish **José R. Ballesteros** had several of his poems published in the Summer/Fall 2022 edition of *The Journal of the South Central MLA* (John Hopkins University Press). His book of poems, "Polvo Enamorado/Lovedust" was published by Izote Press (2014). He serves as contributing editor of poetry for the *Handbook of Latin American Studies* of the Library of Congress.



Professor of History and Religious Studies **Betül Başaran** was an invited speaker at the international conference organized by the Centre for Historical Studies at Jawaharlal Nehru University in Delhi, India,

to commemorate International Women's Day in March. The topic of her talk is the basis for the Mulberry Tree feature written by Başaran on p. 8.



Andrew Cognard-Black, assistant professor of sociology, is the recipient of a grant from the Inter-University Consortium for Political and Social Research to support his research. The grant covers travel and other expenses associated with accessing restricted-use student data from the College and Beyond II Studies (CBII) housed at the University of Michigan Institute for Social Research. Cognard-Black will use CBII data on race, ethnicity, parental education, family income, and a variety of other variables to explore the extent to which racially minoritized, low-income, and first-generation students are underrepresented in honors programs around the country.

Inaugural William Seale Professor of Business **Silvio Borrero** participated in the Colombian Institute of Education Evaluation (ICFES) board of directors meeting on March 15. Borrero has been a member of the ICFES board of directors since 2017, when he was appointed by Colombia's President

Juan Manuel Santos. ICFES is a government organization responsible for the evaluation of education in Colombia.

Professor of History **Adriana Brodsky** was interviewed by "Bridges to Argentina" podcast host Gabriele Dumpys Woolever as one of a six-part series discussing the history of immigration to Argentina. Brodsky's interview, "This is Not Your Gefilte Fish: Couscous, Cookbooks, and the Making of Modern Argentine Sephardi Identity" aired Dec. 29, 2022. Brodsky has done extensive research on the Sephardi



Jews of Argentina. In 2020, she received funding from the National Endowment for the Humanities for research on Jewish Argentine Youth. She was a Fulbright Scholar to Israel in support of research in 2018. She is author of the book "Sephardi, Jewish, Argentine: Community and National Identity 1880-1960" (Indiana Univ. Press, 2016).

Two St. Mary's College of Maryland staff were recently named to the 2023 Healthy St. Mary's Partnership (HSMP) Steering Committee by members of the partnership. **Kelsey Bush '94**, community liaison for St. Mary's College, will co-chair

the Violence, Injury, and Trauma Action Team, and **Jess Jolly**, the College's director of counseling, will co-chair the Behavioral Health Action Team.

A solo exhibition by Associate Professor of Photography **Tristan Cai** runs until May 20 at Towson University's Asian Arts Gallery, Center for the Arts in Towson, Md.



Professor of English **Beth Charlebois** was recently published in "Shakespeare and Cultural Appropriation" (Routledge, 2023). Her chapter, titled "Prospero in Prison: Adaptation and Appropriation in Margaret Atwood's Hag-Seed" analyzes Atwood's fictional adaptation of "The Tempest" entitled "Hag-Seed." Having spent three sabbaticals working as the scholar-in-residence on Shakespeare productions with Prison Performing Arts (PPA) in St. Louis, Missouri, Charlebois has deep experience in this field. Her scholarly work on Atwood's 2016 novel dovetailed with her residency with PPA in 2022 when she worked on the first production of an original dramatic adaptation of Atwood's novel, commissioned by PPA and performed by incarcerated actors, at the Northeast Correctional Center in Bowling Green.



This past fall, students in the Museum Studies 390 class taught by **John Cook**, adjunct instructor of museum studies, studied Chesapeake Bay watercraft and built a 14-foot wooden skiff as part of the coursework. The skiff was donated to Historic Sotterley in Hollywood, Maryland, to be a piece of its “Life on the Patuxent River” display. The students built the skiff using some of the same methods used by 17th-century builders.



Associate Professor of History **Garrey Dennie** delivered the keynote address on day two of the 10th International Garifuna Conference held March 9-11 in the Caribbean nation of Saint Vincent and the

Grenadines. The conference theme was “From Reaction to Action: Challenges and Opportunities for Promoting Reparatory Justice for Indigenous Peoples.” Dennie was an invited panelist on March 24 for a special edition of “A Chat with the

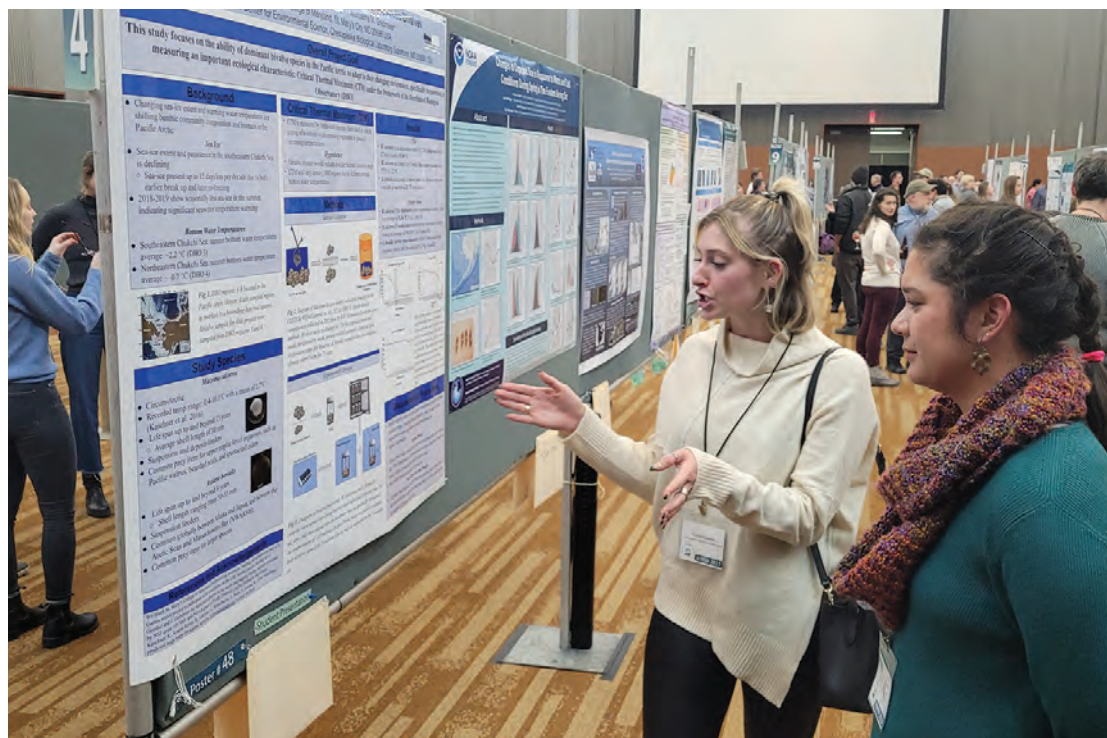
OAS,” a virtual, live event organized by the Organization of American States (OAS) as part of the VI Inter-American Week for People of African Descent in the Americas. The panel addressed the topic “Decolonizing Education in the Americas: Mainstreaming Policies and Practices that Engender Pride in African Heritage and Identity.”

Three staff of St. Mary’s College of Maryland’s Center for Career and Professional Development earned a distinguished award from the Eastern Association of Colleges and Employers. Professional Pathways Director **Michael Dunn**, along with **Julianne Petrilla**, coordinator for the first-year professional pathways, and the program’s externship coordinator, **Meghan Druzzgala**, were awarded the 2023 Excellence in Program Development & Innovation Award honoring the Professional

Pathways (CORE-P) program. The annual award honors outstanding program development in either recruiting or career services that can serve as a model program for others in the field to replicate.

Environmental Studies Major **Sophia Garms ’23** presented her research at the Alaska Marine Science Symposium in Anchorage, Alaska, from Jan. 23-27. Garms’ research mentor, Marine Biology Visiting Assistant Professor **Christina Goethel**, also presented her research at the same conference.

Professor of Mathematics **Sandy Ganzell** is co-editor with Eli Goldwyn and Aaron Wootton of “Mathematics Research for the Beginning Student, Volumes 1 and 2” (Springer Link, 2022). Ganzell wrote a chapter in Volume 1, titled “Mosaics and Virtual Knots.”



*Environmental Studies Major **Sophia Garms ’23** presented her research at the Alaska Marine Science Symposium in Anchorage, Alaska.*



Six St. Mary's College of Maryland students were selected to present their research at the 2023 Phi Alpha Theta (National History Honors Society) Mid-Atlantic Regional Conference on March 25 at Washington College in Chestertown, Maryland. The students were **Sophie Hannah '23, Ben Johnson '25, Eleanor Pratt '23, Chrissy Ringel '24, Mortimer Shiflett '27, Jordan Williams '23**. Ringel earned an honorable mention for her paper, "A Historiography of the American Postal Service."

Sue Johnson, professor of art, has been awarded a two-month fellowship in Paris, France at Cité Internationale des Arts in summer 2023. Located in the Marais along the Seine, she will have a live-work studio space in the well-known arts complex that offers fellowships to an international community of artists. Based on archival research in Paris, Johnson will create new artworks that focus on historical images of women and the intersection of commerce, fashion and spectacle.

Ellen Kohl, assistant professor of environmental studies, recently published articles in "Gender, Place & Culture: A Journal of Feminist Geography" and "ACME: An International Journal for Critical Geographies."

Assistant Professor of Art **Jessye McDowell** had four works featured in "Cosmic Rays Digital: The Digital Wilds," curated by Sabine Gruffat at Lump Gallery in Raleigh, North Carolina. The exhibition ran from March 3 - April 2.

Pam Mertz, professor of chemistry and biochemistry, has been named a 2023 fellow of the American Society for Biochemistry and Molecular Biology (ASBMB). Mertz was a founder of the biochemistry major at St. Mary's College of Maryland and instrumental in the College's ASBMB accreditation in 2016. Mertz presented a talk, "The Gen Z Student: Who Do We Teach" in the session "Teaching Gen Z: Challenges and Opportunities" at the ASBMB Discover BMB meeting



in Seattle, Washington on March 25. In addition, on March 27, she helped facilitate a workshop on iCn3D, a web-based molecular modeling program from the National Center for Biotechnology Information.

Anthropology Professor **Bill Roberts** published two papers in the Annals of Anthropological Practice during February. Both "How Studying Anthropology Changes Students" and "There's a Lot You Can Do with It: Anthropology Undergraduates Talk about Their Professional Futures" included alumni co-authors **Daniel Mehaffey '19, Melody Raynaud '20** and **Colette Nortman '22**. In addition, Roberts secured a grant of \$132K from the St. Mary's County Health Department for a project to address COVID-19 health disparities among populations at high-risk or underserved, including racial and ethnic minorities and rural communities.



Vice President for Equity and Strategic Initiatives **Dereck Rovar** was presented with a 2023 Diamond Award on Jan. 21 by the Not Alone Foundation, Inc. and the Academy of the Diamond in Atlanta, Georgia. The award recognizes excellence in education leadership, diversity, equity, inclusion, humanitarian and community engagement.

Summer Taylor '23, Sydney McGurk '23, Kayla Luhn '22, India Oates '21 and Assistant Professor of Psychology **Kristina Howansky** presented research at the 24th Annual Meeting of the Society for Personality and Social Psychology conference in February. Additionally, assistant professor of psychology **Gili Freedman** helped organize a professional development session for the conference.

Daniel Tobiansky, assistant professor of neurobiology, has been selected to take part in a University of California San Diego program called Leading the Advancement of Underrepresented Neuroscientists for Change (LAUNCH). The program will help Tobiansky to support diversity, equity and inclusion initiatives on campus and advance underrepresented neuroscience majors.

Professor of Psychology **Elizabeth Nutt-Williams** has been elected to her second three-year term on the American Psychological Association's (APA) Council of Representatives. Williams and colleagues recently published an article entitled "Cultivating Authentic Leaders: Toward Conceptual Coherence and Sustainable Practice" in The Journal of Values-Based Leadership.

Christine Wooley, professor of English, recently began a year-long term as president of the Association of Departments of English (ADE). The ADE supports academic departments focused on studying literature, writing and culture by helping its members successfully lead and manage their programs. Wooley has been a member of the association's executive committee since 2019.

WOMEN'S TRANSNATIONAL NETWORKS AND PHILANTHROPIC WORK IN HYDERABAD STATE BEFORE PARTITION

BY BETÜL BAŞARAN, PROFESSOR OF HISTORY AND RELIGIOUS STUDIES

DURING AND AFTER WORLD WAR I, revolutions and post-war treaties carved new nation states out of age-old empires. The new regimes sealed the fate of former imperial families. By comparison to the Habsburgs and Romanovs, for example, whose histories are well known, the exiled Ottoman dynasty has received little scholarly attention.

The Ottoman Empire joined the war alongside Germany and Austria-Hungary in 1914. Following their defeat in 1918, Ottoman territories were occupied and partitioned by the British, French, Italian, Greek and Bolshevik forces. Under the leadership of Mustafa Kemal, the Turkish people fought for another four years for self-determination and independence. In March 1920, Turkish revolutionaries announced the establishment of a new parliament in Ankara known as the Grand National Assembly and elected Mustafa Kemal as its first prime minister. With the Treaty of Lausanne (1923) the Grand National Assembly finally received international recognition as the legitimate government of Turkey as the successor to the defunct Ottoman Empire. Turkey was proclaimed a Republic on Oct. 29, 1923, with Mustafa Kemal Atatürk elected as the first president.

It was in this context of the Turkish War of Independence that the Grand National Assembly first abolished the Ottoman monarchy in 1922 and then the Caliphate in 1924. A total of 155 members of the Ottoman dynasty were deported and



TOP: Professor Başaran in India at Falaknuma Palace now a luxury hotel. BOTTOM: Princess Durrushehvar and her father Caliph Abdulmejid in 1922 RIGHT: Princess Niloufer photographed by Anthony Beauchamp in the 1940s.

exiled. They received one-year passports without re-entry or transit privileges. The deposed Caliph Abdulmejid appealed to Muslim leaders around the world for financial assistance and the most significant aid came from the Nizam of Hyderabad, India, who was regarded at the time as the richest man in the world. Abdulmejid and his family, including his daughter, the Princess Durrushehvar, eventually settled in Nice, France, which became home to a large community of exiled Ottomans. They were joined there by Princess Durrushehvar's cousin, Princess Niloufer, whose relatives scattered all over Europe and the Mediterranean. Most of them lived and died in poverty, as most of their wealth was confiscated by the new regime. It was in France that the princesses came of age and eventually entered the world of royal matchmaking.

Following its independence in 1923, Turkey quickly emerged as a secular model for many nations in the Muslim world (for example, Iran and Afghanistan) with a vibrant feminist movement. Among elite women who assumed leadership positions, Queen Soraya Tarzi deserves attention. In the mid-1920s, like many Muslim women, she publicly took off her veil, possibly influenced by the famous Egyptian feminist Huda Shaarawi. She played an instrumental role in modernizing Afghanistan; women's empowerment and education became her two hallmarks. She sent 15 girls on scholarships to study in Turkey and established Afghanistan's first schools, hospitals, organizations and journals for women. In 1928 she





TOP LEFT: *Princess Durrushehvar and Princess Niloufer were married in a double wedding in 1927 cementing relations between the Caliph's family and Nizam of Hyderabad.*

LOWER LEFT: *Princess Niloufer presiding over a meeting of the Hyderabad Maternity and Child Welfare Centre in 1946.*

MIDDLE LEFT: *Princess Durrushehvar frequently gave radio broadcasts during the 1940s. MIDDLE RIGHT: The princesses regularly appeared in public functions alongside their father in law, Nizam Osman Ali Khan (seen in black here).*

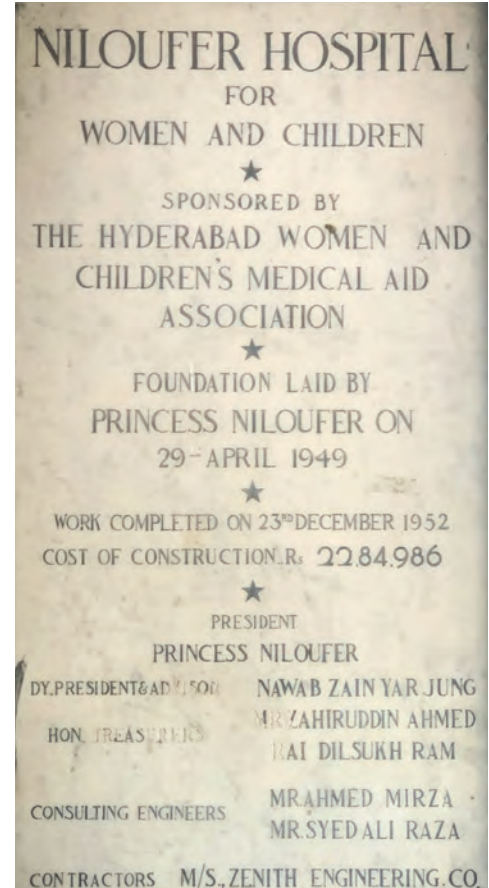
FAR RIGHT: *Princess Niloufer was instrumental in the founding of the Niloufer Hospital for Women and Children.*

received an honorary degree from Oxford University and in 2020 Time magazine recognized her for her advocacy of women's rights. Another example is Queen Effat, who completed elementary and secondary school in Istanbul, Turkey, and had set her mind on becoming a school teacher. After she married King Faisal bin Abdulaziz of Saudi Arabia in 1932, she dedicated nearly half a century to the development of schools for girls, along with many charitable institutions. There is a university that bears her name in Saudi Arabia.

The Ottoman elders in France recognized the importance of a good match for their daughters and granddaughters. As mentioned earlier, the Nizam of Hyderabad had been providing financial assistance to the caliph's family in exile. After long and contested deliberations, a matrimonial alliance between the two families was struck and a double wedding took place in Nice on November 12, 1931. Princess Durrushehvar, 17, married

the Nizam's heir apparent Azam Jah, 24, and Princess Niloufer, 15, married the younger brother Muazzam Jah, 23. The marriages were considered politically significant in the Muslim world and in Europe, and of course in India.

What was life like in Hyderabad for these young brides? Their social interactions were surely restricted and policed because of their position, but they actually encountered many educated and reformist activist women of different ages, unlike their very sheltered social environment in Nice. This must have been very eye opening for them. They were surrounded by groundbreaking female nationalists and feminists like Sarojini Naidu and her daughters — especially Padmaja — who became quite close to Niloufer both as a friend and a fellow social worker; and Masuma Begum, who was already involved in the All India Women's Conference (AIWC) and other organizations in Hyderabad and later became the first



Muslim woman minister in India. Masuma's mother (Tayyeba Begum) was the first Muslim woman to graduate university in India. These women, and others, had a huge impact on the young princesses as mentors who guided and motivated them to get involved in social welfare work.

As early as 1932, Princess Durrushehvar was publishing articles and Princess Niloufer was appearing at functions supporting poor women and children. The Nizam proudly displayed them on all official occasions. However, the main expectation was, of course, to bear children. While Princess Durrushehvar had two sons, Princess Niloufer could not conceive. This may have allowed her more freedom to direct her attention to social work. She was quite unhappy in her marriage and dedicated a lot of time to working with other women. During these very difficult years, she must have found solace in the company of strong women and meaningful work.

Princess Niloufer's life overlapped with major social and political transformations in global history.

Both princesses presided over the Hyderabad State Women's Conference in 1937 and 1938.

In 1938 Princess Niloufer presided over the annual meeting. In her speech she made a special tribute to Mustafa Kemal Atatürk for emancipating Turkish women (this was a controversial topic in the family, since he was the one they held responsible for their exile). That same year she was elected vice president of the National Council on Women in India, Delhi. She promoted equal civic rights for women and emphasized that women should have the same professions as men.



TOP LEFT: Professor Başaran in Nizam palace Purani Haveli.
TOP RIGHT: Professor Başaran visiting with Rajkumari Saheba Indira Devi, former president of the All India Women's Conference at her family home, Gyan Bagh Palace, which won the Heritage Award in Hyderabad.

During WWII, Princess Durrushehvar founded the Women's Civil Defense Corps with more than 1,500 women workers. Princess Niloufer completed air raid training and traveled to villages to educate women about sexually transmitted diseases. Princess Durrushehvar frequently gave radio broadcasts.

Between 1943-45, Princess Niloufer presided over many committees and organizations and the press covered them in detail. She primarily worked with the Women and Children's Medical Aid Association but also the Lady Hydari Club, whose 10 supporting organizations gave evidence of the desire to represent all classes and interests in the state. Princess Niloufer also worked with the Hyderabad Women's Welfare Association on

a committee to establish child welfare and maternity centers, as well as the Women's Volunteer Corps for Public Relief Services.

From the Nizam's government, Princess Niloufer secured funds to establish a training school and eventually a hospital for women. Sarojini Naidu and her daughter Padmaja appeared alongside her in many of these initiatives.

In 1947, India gained independence from British rule. One year later, the Indian military forced the Nizam's abdication, after his holdout to maintain Hyderabad State amidst an otherwise unified India. Unlike the Ottoman collapse in 1924, this time the deposed weren't sent into exile. In 1948, Princess Niloufer's husband took a second wife and in 1952, the now-divorced Princess Niloufer decided to live in Paris and never returned to Hyderabad. Ironically, she might have returned to Turkey by this time as she'd been reinstated for a passport.

In conclusion, Princess Niloufer's life overlapped with major social and political transformations

in global history. Her social welfare work in Hyderabad was inspired and shaped by a transnational network of women and organizations; and in turn, she made significant contributions to women's empowerment in Hyderabad State, especially in the medical field. She and Princess Durrushehvar used their privilege to empower women in Hyderabad state during crucial 20th-century political transitions and transformations. They belonged to a generation of progressive and reformist elite women who played prominent roles in the efforts to empower women in India, and their contributions have not been properly acknowledged in the scholarship.

Betül Başaran was awarded a Fulbright Global Scholar Research award for the spring 2021 semester to conduct important archival research in England and India for her book project on the legacy and impact of Princesses Niloufer (1916-1989) and Durrushehvar (1914-2006). Başaran's host institutions were the School of Oriental and African Studies in London, The Centre for Historical Studies at Jawaharlal Nehru University (JNU) in New Delhi, and the Centre for Deccan Studies in Hyderabad.

Elle Cosimano is **Killing** It.

BY EMILY VANCE '25, ENGLISH & SPANISH DOUBLE MAJOR,
MARKETING COMMUNICATIONS INTERN

ELLE COSIMANO '95 IS A NEW YORK TIMES AND USA TODAY BESTSELLING author who has written numerous young adult and adult novels. Cosimano won the International Thriller Award and was a finalist for an Edgar Award for her first novel, "Nearly Gone" (2014). Her career as an author began with no prior training in creative writing in 2011 after she stepped back from 14 successful years of real estate that had left her unfulfilled.



"It was my mom who originally suggested taking a break," Cosimano reveals, "and trying my hand at writing a novel. Over the years she must've heard something, a kernel of a desire somewhere that I didn't know I had." During that summer she spent her time writing away, devoted to getting through the novel. She wanted to write a book to get to the end, to say that she could do it. "You progress through time into motherhood," she emphasizes, "and you spend all these years taking care of everybody else's needs and nurturing everybody else's goals... being able to type 'The End' was the one goal I had for myself."

"The story that called to me and the only story that I had a seed of an idea for was really best told through the lens of a teenage protagonist," Cosimano says of her "Nearly Gone" protagonist Nearly Boswell. Her first six published books were young adult fiction. Her own personal lens began to shift when she ventured into the world of adult fiction with the Finlay Donovan series.

The series starts with "Finlay Donovan is Killing It" (2021) and follows a recently divorced single mother and author struggling to make deadlines, pay bills and keep custody of her children. The tale takes a turn when an eavesdropper mistakes Finlay for a contract killer in a Panera Bread, forcing her to come to face a heavy solution to her problems. A worldwide success, "Finlay Donovan is Killing It" and the two subsequent books in the series ("Finlay Donovan Knocks 'Em Dead" and "Finlay Donovan Jumps the Gun") have been translated and published in 25 ancillary and foreign markets all across the globe.

Finlay's voice, being mirrored after Cosimano's own, represents the struggling author and mother which adds another dimension of relatability of the character to the audience's reality. "Finlay's mom voice is very much my mom voice," she admits. "Finlay's frustrated author voice or struggling author voice is very much my struggling author voice." Cosimano says that readers tell her Finlay is "very relatable as a woman, as a mother, as a creative."

Cosimano's fiction blends with her reality in the heart of Finlay's character as a fellow mother



ABOVE: *The Finlay Donovan series is published worldwide including Bulgaria, Russia and Portugal. RIGHT: Elle Cosimano relaxing at home.*

and author. She elaborates on the meta effect of a crime writer and mother writing about a crime writer and mother saying, "There is definitely a meta effect and when I'm writing I have a lot of fun with that," she explains. "I lean into it at times."

In her third novel in the Finlay series, "Finlay Donovan Jumps the Gun" (2023), Finlay, by recommendation of her sister, goes to a citizens' police academy to further her crime writing repertoire. Cosimano experienced something similar at a writers' police academy, where she was able to

come together with people who write about crime in all of its forms. "I got to handcuff my critique partners," she says. "I got to search a jail cell for contraband; I got to secure a crime scene."

A character that Cosimano also ties into the fiction from some of her reality is Finlay's sidekick, Vero. Vero is Finlay's nanny turned partner in crime after discovering Finlay with a corpse in her garage. The relationship between Finlay and Vero "is inspired by some real-life strong women that have been there for me," Cosimano explains.

"My two closest critique partners, Megan Miranda and Ashley Elston, were with me when I came up with the story of Finlay Donovan," Cosimano admits, adding " ...that first book is dedicated to them... [these women] have given me a leg up and have supported me throughout the years.... Vero is the spirit of that relationship."

To Cosimano's fans, the Finlay Donovan series is more than just dark comedy. It's about "emphasizing the importance of supportive relationships and women supporting and lifting up other women," she says. Being released during the pandemic, it was also what her readers needed to lift themselves up and laugh.

"I get fan mail every day from people who say that these books came at a time when they just needed to laugh," Cosimano explains, or "I was in a dark place and these books got me through."

It wasn't just the novels or the author that this bright light came shining through. "The Finlay Donovan fandom is a really, really joyful place to be," Cosimano offers. "It's a lot of support, a lot of gratitude, a lot of enthusiasm, it's a bright light. I think we need more of that."

"One of the most wonderful things about writing joyful books is the joy that it attracts and the joy it brings back. It's been an amazing thing."

Bringing light into the pandemic was hard but important work that Cosimano set herself to and keeping the light going as she continues the Finlay Donovan series is a way to keep the future trials and tribulations of the world at bay.

Elle Cosimano '95 and Tony Cosimano '94 have two sons and live in central Virginia.



JEZEBEL IN A POST- MODERN WORLD

AN INTERVIEW WITH SARAH MALENA, ASSOCIATE PROFESSOR
OF HISTORY BY LEE CAPRISTO, EDITOR



ILLUSTRATIONS BY WINSTON MAVRAGANIS AND SLIDES COURTESY OF SARAH MALENA AND SHAWNA DOLANSKY, WOAW PROJECT

THIS PAST FALL, AT THE 10TH INTERNATIONAL CONGRESS OF PHOENICIAN AND PUNIC STUDIES CONFERENCE IN SPAIN and at the annual meeting of the Society of Biblical Literature in Colorado, Associate Professor of History **Sarah Malena** presented research based on her new project, Women of the Ancient World (WOAW), an interactive website, styled as a graphic novel, and designed to be a teaching resource and research forum. Professor Malena is co-directing the project with Associate Professor Shawna Dolansky of Carleton University (Ottawa, Canada). The project also employs a team of creators and researchers, which includes SMCM History and Anthropology major **Sophie Hannah '23**. The WOAW project is supported through a generous Social Sciences and Humanities Research Council (Canada) Insight grant, as well as funding from St. Mary's College of Maryland and Carleton University.

The project's first installment is an examination of the 9th century BCE Phoenician-Israelite queen Jezebel, known from the books of 1 and 2 Kings in the Hebrew Bible. In talking with her first-year students about Jezebel, and hearing what if anything students associate the name Jezebel with, Malena explains how cultural canons influence our interpretation of history. She invites her students to look for a different point of view to explore. She likes to steer initial enthusiasm about a person/period of history to build, incrementally, a depth of understanding through informed research.

In March 2023, I sat down with Professor Malena to talk about this ambitious project.

How will the WOAW site work?

"Readers can choose how deep to go with exploring our research by clicking links in the images and our translations of the ancient stories," she says. "They can choose to find out why we made the interpretative decisions that we have and how we've guided the artist in depicting Jezebel and her story. Areas to explore include items in the drawing, words in the translation, chronologies, maps, or venturing into galleries of the texts and artifacts we've based the scene on.



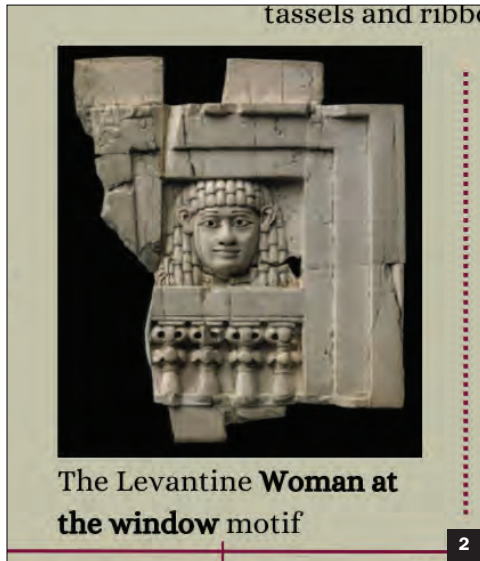
There are also explanatory articles (brief posts) that provide historical context about relevant issues, like queen mothers, 9th-century politics, protective jewelry and palace hierarchies." [1]

"There's also an explanation for choosing the graphic novel style illustration. In short, it's increasingly recognized as a useful way to capture historical reconstruction and scholarly arguments about past lives. In the case of women's lives where we are working with limited evidence, we can convey the wealth of information

we have about the worlds around the women and in which they lived and situate our figures within these reconstructed spaces."

How do you work out what the historic individual might have looked like for the graphic representation?

"It's very rare to find depictions of individuals' likenesses in the Iron Age Levant (eastern coast of the Mediterranean)," Malena admits. "We use



a wide variety of evidence and build on our own and other scholars' research to construct scenes depicting these figures. The evidence comes from ancient literature like the Bible, from inscriptions and seals, from artifacts and archaeology, and we allow for informed imaginings of what isn't preserved for us in other ways."

"In the case of Jezebel, there is no record of her outside of the biblical text (1 Kings 16-2 Kings 9), so we look at evidence of elite women from the Assyrian empire (known in some art, through burials goods and archaeological remains, and through depictions in inscriptions)," she continues. "For example, from the ancient Assyrian site of Nimrud, archaeologists uncovered a very rich burial which provides evidence of gold and jeweled adornment and some evidence of fabric, and because the Assyrian royals and Levantine elites used similar luxury goods, we argue that the women would have dressed in similar styles. Sharing in related fashion, palace architecture, banqueting and party styles was a way for the most powerful people in these societies to argue for their positions when there was a lot of competition for leadership."

[Home](#)
[About Us](#)
[Resources](#)
[Contact Us](#)

Jezebel's Death, 2 Kings 9:30-37

2 Kings 9:31-32

Hebrew text:

וַיְהִי בֹא בַשָּׁעַר וַתֹּאמֶר הַשְּׁלֹמֹם זִמְרִי הֲרַג אֲדֹנָיִי: וַיֵּשֶׂא פָנָיו אֶל-הַחֲלוֹן וַיֹּאמֶר מִי אִתִּי מִי וַיִּשְׁקִיפוּ אֵלָיו שְׁנַיִם שְׁלֹשָׁה כְּרִיסִים:

English Translation:

³¹And Jehu came in the gate, and Jezebel said, "Peace, Zimri murderer of his master?" ³²And he lifted his face to the window and he said who is with me, who? And gazed out toward him two, three, eunuchs.

FULL HEBREW TEXT AND TRANSLATION

What is an example of how this works on the WOAW site?

"An example that captures the essence of the Jezebel part of this project and the method is the common motif of the 'woman at the window' known from Iron Age ivory carvings and stories [2]. The intricate carvings were painted/gilded, had inlays of additional precious materials and adorned elite furniture. The woman at the window motif features a stylized palace facade with columns and a balustrade, examples of which we know from architectural remains. In our interpretation, the woman stands in a 'window of appearances' overseeing the palace grounds. In the case of Jezebel's story, she confronts the leader of a coup, and her position on the balcony of the fortress/palace is her last statement of power before she is thrown from the balcony to her death by her attendants who have conspired with the usurper Jehu." [3]

When will WOAW site be launched?

"We are working to launch the site by the end of this year. As we work, we invite the public to visit <https://woawhistory.com/> to learn more and sign up for updates."

What source materials does a 10th century BCE scholar rely upon and does all research require that you be able to read/understand Hebrew? If not, are there translated scholars whose work you rely on most?

Malena, who can read/translate Biblical Hebrew, Aramaic and Greek, understands the role of Akkadian language in the cuneiform since it played a role in the way in which the most powerful people of the Iron Age documented information.

"We do have original texts in various archives of clay tablets and papyri (texts are letters, royal annals), and also inscriptions on monuments or burials, but we don't have any Iron Age originals of biblical books," she explains. "Two silver scrolls with some lines of poetry known from biblical hymns are a notable exception. It is a similar problem with literature like Homer: we have only the copies that societies kept over many centuries. So, our research looks for a new angle or way of interpreting other translations/interpretations in the canon of established theory, all while still being grounded in historical research."

Co-directors of the WOAW Project, Associate Professor of History Sarah Malena and Associate Professor Shawna Dolansky of Carleton University at a recent conference in Spain



“Although we’re not aware of other scholars who are addressing Iron Age history in quite the same way as the WOAW project, many scholars specialize in ancient women’s lives,” she says. “Eleanor Ferris Beach’s ‘Jezebel’s Letters’ has been of interest to us, and studies by Saana Svård, Amy Gansell and Laura Quick have been influential for our interpretations.”

What is one of the biggest challenges in investigating the lives of ancient Mediterranean and Near Eastern women?

“No source materials look at women for the sake of women: they all forward a male-oriented narrative,” Malena explains. “So we have to ask new questions pertinent to women and research materials in search of clues to answer these new questions.” She relates this to her history students as a way of life, applicable to any era of history, that new questions challenge the established narrative.

What is it about the 10th century BCE that made it your primary research area of interest?

“Stubbornness!” she says with a laugh. “That period has been called the Dark Ages because there’s not much documentation of the Mediterranean world during that era. Around 1200 BCE was a time of one political and bureaucratic collapse after another. Between 1200-1000 BCE Middle East and Greece collapsed, so very few records survived there. Around 1000-800 BCE new kings emerged, who were very influential, but there’s still no record of them from their own time periods. The biblical stories of David and Solomon are the best-known examples. Jezebel too belongs in this category.”

“However — and why I refer to this period as the Iron Age (rather than a ‘Dark Age’) — ancient trade remained vibrant during these political/ bureaucratic collapses,” Malena argues. “As a grad student, I dug for archaeological evidence in southern Jordan at a 10th-century copper site. There is, for the modern age, archaeological evidence to help inform what the 10th-century BCE might have included.”

At SMCM, how do you sell ancient history and Biblical history to students?

“On the first day of class, we talk about the popular idea that aliens built the Egyptian pyramids and dispel that idea right away,” she admits. “I humanize the ancient world by sharing the example of the ancient Egyptian teen in scribe school complaining about having too much homework,” she adds. “His father gives him a very long list of way worse jobs he might be forced to do if he can’t cut it as a scribe, in a way of saying buck up and do your homework!” (A list of those nasty jobs can be found at <https://www.worldhistory.org/> by searching on “The Satire of the Trades.”)

“I try to sell the notion that things that seem dead aren’t and that the fun thing about ancient history is that there is lots of room for modern thought and new questions.”

From graphic-novel women warriors to ancient Egyptian teens complaining about homework, Malena serves up the old world in compelling, new world ways.

MAKE GOOD YOUR HEAD

THE EVOLUTION OF HEAD ADORNMENT: MATERIAL CULTURE, GENDER, AND ICONOGRAPHY IN THE ANCIENT NEAR EAST

On the **Warka vase**, male and female figures wear headdresses that signify their gender identity and elevated status



Queen Puabi's headdress weighed 5-14 times more than those of other high ranking women and was adorned with gold wreaths and ribbons




The bull horn helmet that Naram-Sin wears on the **Victory Stele of Naram-Sin** indicates the king's god-like status



Amorite iconography from Mari attests to clothing items and headdresses that were crafted separately and then sewn together for an individual to wear


Texts from Mari do not indicate significant differences in men and women's clothing outside of veils and ornamentation, which denoted social class

Iconographic evidence dating to the Bronze and Iron Ages shows that the elite preferred to wear distinctive styles like vibrant colors and stylized fringes



The Levantine Woman at the window motif

Neo-Assyrian kings projected their status with headgear such as diadems and square fezzes with tassels and ribbons



In this **basalt relief of the goddess Kubaba**, she is depicted wearing a tall, squared cap

Jezebel adorns her head to prepare to face Jehu (2 Kings 9:31)







The WOAW Jezebel timeline (above) was researched by **Sophie Hannah '23** as part of her year-long work as a research assistant on the project. “This is my first job within the academic field,” she says. “I love listening to the other people on the team talk about all the cool things they have been researching and hearing all the possibilities of applying research to construct lived experiences. One thing I’ve learned is the intense effort that publications and conferences take. This semester I have gathered the courage to present at two conferences and am so glad for it!”



Smile for the Camera!

PHOTOGRAPHY: HOWARD KORN

Good photography is the lifeblood of any institution that wants to tell its story, and SMCM is in the practice of supplementing its talented group of in-house photographers with an annual photoshoot with a professional photographer. It hardly seems like work when the students are so enthusiastic.

Here's how it came out in numbers:

- 1 Solomon Seahawk
- 2 days
- 4 staff
- 17 faculty and coaches
- 28 locations
- 100+ students
- 3,714 photos

ALUMNI CONNECTION

CLASS NOTES

1970s

Jan Clark Garahy '73 [1] recently celebrated with **Susan Holt Beckman '72** and **Mark Clark '78** at a baby shower for Susan's daughter-in-law and Mark's daughter, Erin Clark Beckman. Jan is Erin's aunt and was thrilled to reconnect with old friends from St. Mary's College after 50 years.



1980s

Michelle Paris '85 [2] will have her debut novel published by Apprentice House Press on May 2, 2023. Inspired by her life as a young widow, "New Normal" is currently available for pre-order on Amazon, Barnes & Noble, Bookshop and Walmart.



Kimberly Moore Clements '87 [3] recently earned her recertification as a national board-certified teacher in career and technical education - early adolescence through young adulthood in the fields of information systems, technology, communications and the arts. She is an interactive media production instructor at the Career & Technology Academy in Prince Frederick, Maryland, and a master teacher for the Maryland State Department of Education. She also serves as an elected executive member of the SkillsUSA Maryland board of directors and was named the SkillsUSA Maryland Adviser of the Year in 2022. Kimberly majored in art at St. Mary's College of Maryland and earned her master's degree in

leadership education from the College of Notre Dame of Maryland. She is also an Adobe certified professional in visual communications.

1990s

Angela Wathen '98 [4] is current co-owner with partner Sean Earley of The Potomac Gardens in Colton's Point, Maryland. A popular gathering place since 1936, it has been a general store, post office, gas station, bar and dance hall. The gas station is gone but all else endures. Angie, a former art teacher in St. Mary's County Public Schools, loves the history of the building and all the stories from the generations of families who've enjoyed it over the years. "Everyone's got a story," she says. "It's amazing!"



2000s

Terry Elde Wood '01 was presented with the Theodore James Ryken Award at a schoolwide mass to celebrate the feast of St. Francis Xavier in December of 2021. The award recognizes an adult member of the St. Mary's Ryken school community who continuously upholds their mission and values of education as well as proclaiming the Gospel of Jesus Christ. Wood, who has been actively involved in the community for over twenty years, has held many positions such as Spanish teacher, media specialist and educational tech systems administrator. She is described by her peers as someone who "works tirelessly" and "always finds a solution." Wood earned her master's degree in

educational technology leadership from George Washington University. Those in attendance at the award ceremony included her husband and SMCM alumnus **Ben Wood '01**, her daughter Lizzy, her son Connor, her parents and her in-laws.

Pamela Naab '05 recently started a career as an assistant professor at Lasell University, where she teaches undergraduate psychology courses, collaborates with Lasell Village (an intergenerational campus community) and researches topics related to health behavior change. Pamela received her PhD in counseling psychology from Northeastern University in 2017. She feels that the mentors and teachers at SMCM instilled a desire for lifelong learning that she tries to pass along to her students today.

Eileen Mitchell '06 is a project support specialist for the James Webb Space Telescope Project at NASA's Goddard Space Flight Center in Greenbelt, Maryland. Her husband **Jim Mitchell '06** is the offensive coordinator for the men's lacrosse team at Princeton University. They live in Princeton, New Jersey with their two children, Lila and Jack.

Ryan Nawrocki '06 currently serves in the Maryland House of Delegates District 7A, representing Baltimore County. He is a member of the Environment and Transportation Committee. He and his family reside in Middle River, Maryland.

Two Alumni Working in the Mining Industry in the UK!

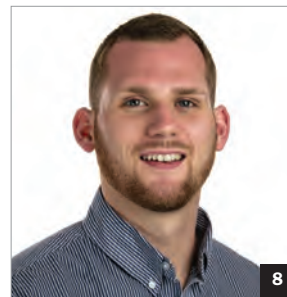
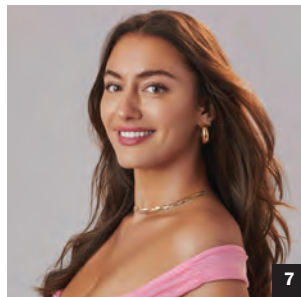
In the winter issue, we highlighted **Stacy Hope '04, [5]** who had made a career in the UK mining industry. After press time, we learned that she and **Dan Driscoll '00 [5]** know one another from their common careers in that industry. Here's a bit more about Dan:

Dan was a history major who played lacrosse at St. Mary's College. He learned to sail recreationally at SMCM. "St. Mary's is still a very special place," he says.

At the suggestion of his lacrosse assistant coach (Rob Bray), Dan took a geology class as an elective while at SMCM. Dan's advice to current students stems from this experience, when he says: "If you take a class that really grabs your interest, just know this: there may be whole careers out there in that area. I took a geology course and have learned that whole careers come from geology."

He graduated from St. John's University School of Law in 2005. It was after that, in Columbus, Ohio, that Dan began working in a legal capacity within the natural resources field connected to mining in the southeastern part of the state. Ohio didn't suit Dan and his spouse, so in 2008 they took an opportunity to move to Saudi Arabia. Mostly working on oil and gas mergers and acquisitions there and also in Dubai, UAE, Dan made London, UK, his family's home in 2012. His focus on liquified natural gas during a three-year assignment in Maputo, Mozambique, was followed by a West Africa-focused mining business based in Monaco. In Monaco, he had time to enjoy sailing again.

His work takes him regularly to various places across the Middle East and Africa. More than once, he's encountered **Stacy Hope '04**, a social anthropologist working as managing director of Women in Mining UK. After nearly five years with Endeavor Mining as vice president of legal, risk and compliance, Dan became managing director of Extractives Advisory in September 2022, based in London. "At the core," he says, "I'm an English lawyer."



2010s

Mayumi Roller '13 has been pursuing an acting career since 2017. She appears in the just-released film, "The Ritual Killer" starring Morgan Freeman and Cole Hauser. Mayumi plays Deelie Boyd, the wife of Detective Boyd, played by Hauser.

Dani Thorne '13 [6] was honored as the 2022 Virginia Class 6 State Coach of the Year for Alexandria City High School (ACHS), formerly TC Williams

High School. She is the first female head coach in ACHS history to win a state championship. She played collegiate volleyball for four years at St. Mary's College.

Anastasia Keramidas '14 [7] recently appeared on ABC's "The Bachelor," which premiered on Jan. 23, 2023.

Brendan McFall '14 [8] was awarded the annual Chair's Award by the Security Industry Association in recognition of his

efforts to further the association's mission. After graduating from St. Mary's College, Brendan began his security career as executive assistant for the CEO of Northland Control where has since served in numerous positions. In 2022, he became the East Coast operations manager at Northland.

Lauren Taylor '14 was promoted to associate director of signature programs & local alumni outreach at the University of California, Santa Cruz, advancing from her prior position as assistant director of early engagement. Lauren previously served as the associate director of alumni relations at St. Mary's College of Maryland.

2020s

Jeanette Warren '20 and Derrick Miller '20 [9] were invited to perform with the Chesapeake Choral Arts Society, directed by **Leroy Pressley '79**, on March 25 & 26, 2023 at St. Joseph's Church in Pomfret, Maryland. Entitled "Melodies through Time," the concerts featured works by R.V. Williams and G.B. Martini, for which Jeanette and Derrick performed the featured solos, along with Jeanette's presentation of Franz Schubert's "Ave Maria" and Derrick's presentation of Rossini's "Cujus animam" from the oratorio "Stabat Mater." Audience members provided non-perishable food items and/or monetary donations as part of their admission to support LifeStyles of Maryland, a group that provides food, clothing and other support for those in need.

MARRIAGES & UNIONS

Molly Malarkey '14 and **Josh Stine '14 [1]** were married on Oct. 8, 2022 at the Indian River Lifesaving Station in Delaware. The couple met at St. Mary's College of Maryland, and many fellow alumni were present at the wedding.



ARE YOU COUNTED THIS FISCAL YEAR?

Before the sun sets on the fiscal year, join 1,324* alumni in supporting the College at smcm.edu/giving before June 30, 2023.

River Bound, Paradise Found

Connect with old friends and meet new ones at Alumni Weekend, June 8-11.



REGISTER FOR
ALUMNI WEEKEND TODAY!

*Number as of April 10, 2023



BIRTHS & ADOPTIONS

Elizabeth Lewis Boyle '07 and **Kevin Boyle '07 [1]** welcomed a son, Ridge Lewis, on Sept. 15, 2022. The family resides in Boyds, Maryland.

Tara Brown White '08 [2] and husband Chad welcomed a daughter, Keira Elizabeth, on July 12, 2022. The family resides in Greencastle, Pennsylvania.

Korinne Buckwalter Super '12 [3] and husband Peter welcomed a son, Corbet, on Jan. 26, 2023. The family resides in Silver Spring, Maryland.

Danielle Krause Haig '14 [4] and husband Bill welcomed a daughter, Morgan Fox, on Dec. 7, 2022. The family resides in Mount Pleasant, South Carolina, along with Morgan's older sister, Vivian Mona.

Katie Dreyer Marquette '14 and **Chris Marquette '14 [5]** welcomed a daughter, Lucia "Lucy" Joan, on Jan. 21, 2023. She joins older sister, Josephine, who turned two years old in March. The family resides in Sparks Glencoe, Maryland.

IN MEMORIAM

Martha Webster Myers

Yeager '39HS '41JC died peacefully at home on Dec. 22, 2022. After obtaining her associate degree from St. Mary's Seminary Junior College, Martha commenced employment as the administrative assistant to the principal of St. Paul's School, where she worked until her marriage to George Thomas Yeager in 1957. The couple traveled extensively throughout the U.S. and Europe and enjoyed

spending quiet time on the water and in the country. In addition to involvement with her church, participation in dance competitions and time spent with family and friends, Martha also served as a member of the Mulberry Tree Society of St. Mary's College of Maryland. She returned to her alma mater often and, after her husband's passing, founded a scholarship at the College in his honor. Martha was predeceased by her three brothers and husband, but she is survived by many loving nieces and nephews.

Patricia "Pat" Rivenburg

Anderson '56JC died peacefully at home on Apr. 8, 2021 with her husband of 60 years by her side. After receiving her associate degree from St. Mary's Seminary Junior College, Pat worked for 21 years as a crossing guard for the Warwick School District in Lititz, Pennsylvania, in addition to 25 years of raising four children. She was an active choir member in many church communities and sang with the Lancaster Chorale for 20 years. She always made time for camping trips and traveled much of the United States with

her close-knit family. Pat is survived by her devoted husband, David Anderson, along with her four children and many other loving family members and friends.

Roy M. Walsh Jr. '67JC died of respiratory failure on Dec. 20, 2022 at Anne Arundel Medical Center. He met his beloved wife of 54 years, **Donna Erhardt Walsh '66JC**, whilst attending St. Mary's Seminary Junior College. After marrying in 1968, the couple built homes in Crofton and Crownsville, Maryland, where they raised two sons,

Michael and Ryan. Roy spent more than 45 years in the credit management field and gave many years of dedicated service to the National Association of Credit Management, including as national vice-chairman of the board and chairman of the association's National Capital Region. He enjoyed traveling throughout the U.S. with Donna and participated in many athletic activities, including service as a youth soccer coach. He is survived by his wife and two sons along with many other loving family members.



Contact Miranda Pontarelli, annual giving officer, at mjpontarelli@smcm.edu or **240-895-2122** if you would like three or more plaques.



ST MARY'S
COLLEGE of MARYLAND



NEED A UNIQUE GIFT

for a graduating senior, your favorite faculty or staff member, or a retiree?

Honor their legacy on campus with an engraved plaque on an auditorium seat or stadium locker.

INSCRIBE A
LOCKER TODAY!



INSCRIBE A SEAT
TODAY!





DAN PINDELL

FRIEND OF THE COLLEGE

Carol Ann “Scotty” Boellhoff Giesen, a loving mother, grandmother, and accomplished academic, died on March 24, 2023 in Lewisburg, Pennsylvania, at the age of 91. Born on June 11, 1931, in Shelby, Ohio, to Louis Earl Boellhoff and Zorada Lois (Pittenger), Carol was an independent, free-thinking woman who lived a full and meaningful life. In

1950, she joined the U.S. Army during the Korean War and was stationed in Virginia, Georgia and Osaka, Japan. When her military service concluded, she settled in Sunbury, Pennsylvania, where she helped her husband, Herbert H. Giesen, start Giesen Insurance. Carol learned to fly a plane before she could drive a car. At the age of 42, Carol enrolled as a freshman at Bloomsburg University, graduating with a Bachelor of Arts degree in 1976. She then

continued her studies at West Virginia University, where she earned a Master of Arts degree, and eventually her doctorate degree in 1980. Her book, “Coal Miners’ Wives: Portraits of Endurance,” (University Press of Kentucky) was published in 1995. Upon graduation, she taught developmental psychology at St. Mary’s College in Maryland, serving for 21 years, eventually retiring as division head in 2001. Throughout her tenure at St. Mary’s College,

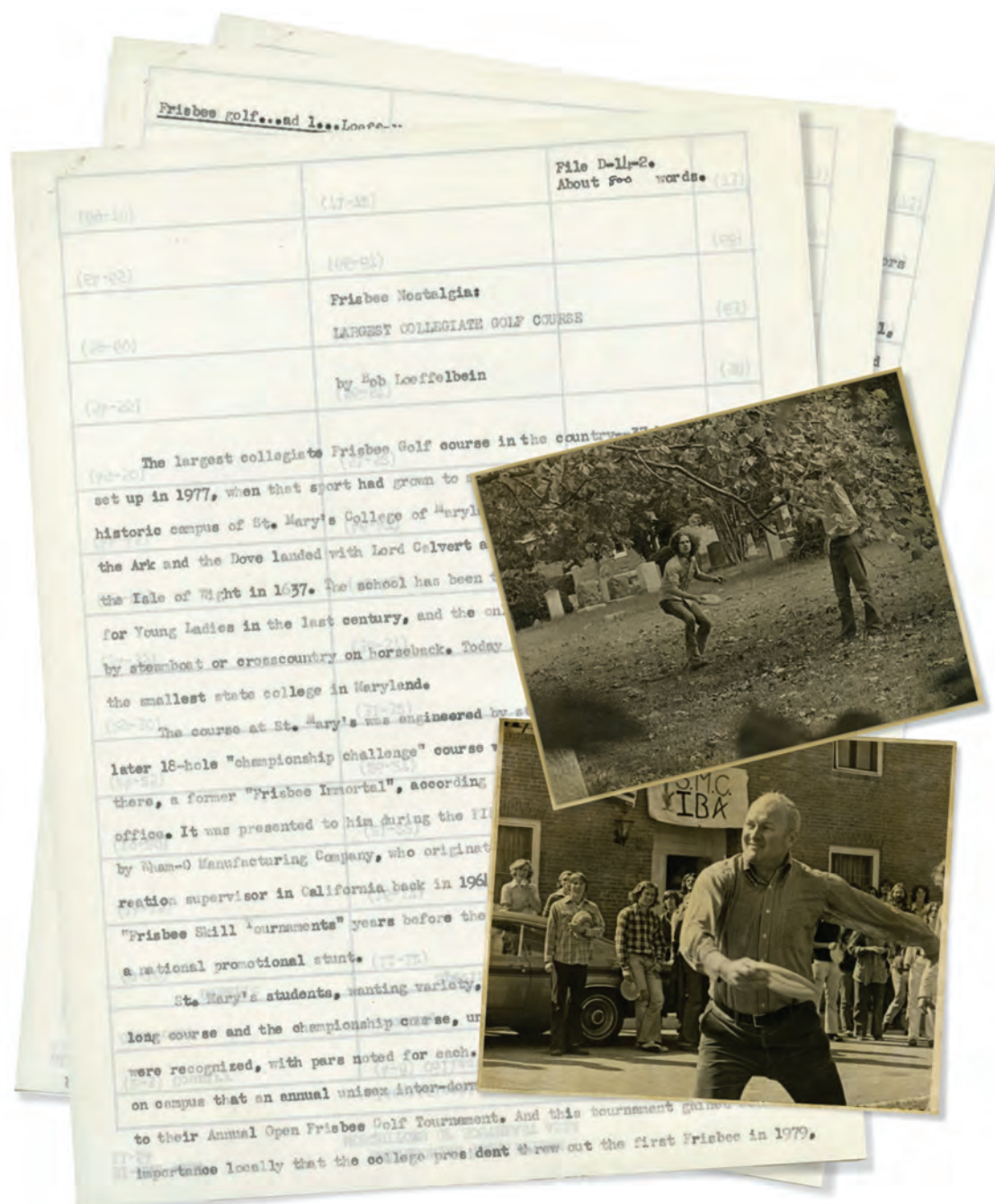
she received numerous awards for her accomplishments and service to the surrounding community, including the Homer L. Dodge Award for Outstanding Service in 1998 and the Carol Giesen and Laraine Glidden Scholarship that was established in 2012 to benefit non-traditional students who have academic merit and financial need. After retirement, Carol became an avid gardener who loved designing the landscape and tending the gardens at her

home in Selinsgrove, Pennsylvania. Carol is survived by two sons, four daughters and six grandchildren. Her two sons and daughters-in-law are: Mark L. and April E. Giesen, and Fritz A. and Marcie A. Giesen; and four daughters and one son-in-law: Stephanie A. and Thomas P. Sell, Lisa Markley, Darcy A. Richards, and **Holly A. Giesen ’86**.

REMEMBER THIS?

A one-time member of the faculty, **Bob Loeffelbein**, wrote a three-page history of Frisbee golf at St. Mary's College that is housed in the College Archives. From its 37-hole course debut in 1977 – the largest collegiate course in the United States at the time – to myriad refinements and changes over the years, Frisbee golf has captivated the campus for nearly 50 years. In the photo below, who is hiding in the trees of Trinity Church cemetery?

Do you have a photo that captures your era at St. Mary's College? Send it to archives@smcm.edu.



TOP: Frisbee golfers from 1977.

PHOTO BY BOB LOEFFELBEIN.

MIDDLE: President Renwick Jackson provides the opening toss at the 1979 tournament.

PHOTO BY BOB LOEFFELBEIN.

TRANSLATED EXCERPT FROM THE LOEFFELBEIN HISTORY:

"All the holes were given distinctive, and descriptive, names. "Prayer Point" was a hole approached from a 300-foot narrow beach between two bodies of water. The hole itself sat on a point of land with water on three sides. "Duffer's Collapse" hole sat on a beachside abutment over a hill. It had to be approached "blind," since it couldn't be seen from below. At "Traveler's Rest" hole, the Frisbee had to be skipped entirely under a 1 ½-foot high stone bench. And at "Trail's End" hole, the 18th, the Frisbee had to land INSIDE an empty planter's pot only a bit larger than the Frisbee (though some competitors got around that by using mini-Frisbees for that hole)."



RIVER CONCERT SERIES



THE JOGO PROJECT



ANGÉLIQUE KIDJO

SUMMER 2023 EVENTS

Saturday, May 13 at 7 p.m.:
ANGÉLIQUE KIDJO
 "Africa's Premier Diva" - TIME
 Tickets: www.smcm.edu/dodge

June 8-11
ALUMNI WEEKEND
www.smcm.edu/alumni

Friday, June 16
MULBERRY MUSIC FESTIVAL
 Featuring four great acts: Oh He Dead, Kevin Howard, The Boneshakers and headliners The JoGo Project.
 Free outdoor event; food vendors on site.
www.smcm.edu/mulberry-music-festival
 Carly Harvey '07 is mistress of ceremonies.

Fridays, June 23 – July 21
RIVER CONCERT SERIES
 Featuring the Chesapeake Orchestra, directed by Jeff Silberschlag. Free outdoor events; food vendors on site.
www.smcm.edu/rcs

August 4-5
GOVERNOR'S CUP 50th ANNIVERSARY
 Waterfront celebration on Aug. 5

Saturday, August 5 at 3 p.m.
BALTIMORE SYMPHONY ORCHESTRA
 One of Maryland's most significant cultural institutions.
 Free tickets: www.smcm.edu/dodge



BALTIMORE SYMPHONY ORCHESTRA



GOVERNOR'S CUP



ST MARY'S
 COLLEGE of MARYLAND



Nadia Velasco '25 created a Bay to Bay Service Days activity using recycled T-shirts to make pet toys. She pre-cut the shirts into strips for braiding and offered instruction on how to braid and knot the strips into toys. On April 2, as part of the kickoff to the Office of Alumni Relations' Bay to Bay Service Days campaign, Nadia and other student volunteers completed 62 pet toys that will be donated to the Linda Kelley Animal Shelter in Prince Frederick, Maryland. Other volunteer service activities that day benefitted the Kate Chandler Campus & Community Farm, the St. Mary's Watershed Association and Historic Sotterley.

