

St. Mary's College of Maryland &
CHESAPEAKE
ORCHESTRA
Jeffrey Silberschlag, music director

PRESENTS

RIVER CONCERT SERIES 2024

SERIES SPONSORS:

Maryland State Arts Council
DCS Corp
St. Mary's County Arts Council
St. Mary's College Arts Alliance
David Bruce Smith Foundation
Steinway Pianos

SPONSORS:

BAE Systems • Bollywood Masala • Cole Travel • Heidelberg Patterson Welch Wright • KBR
Mary Catherine Bunting Foundation • Northrop Grumman • O'Brien Realty • Perlick Management, LLC
Raytheon • Sabre Systems • Spalding Consulting, Inc. • Taylor Gas Company • Toyota of Southern Maryland

LOVE CHESAPEAKE



Live-Work Experts

Waterfront • Condos • Farms • Cottages
Office • Warehouse • Retail • Industrial
Targeted Marketing • Buyer Representation

**BERKSHIRE
HATHAWAY**
HOMESERVICES
PENFED REALTY

MCNELIS
— & —
ASSOCIATES

 410-394-0990



L♥veChesapeake.com

Residential • Commercial



A member of the franchise
system of BHH Affiliates, LLC

Get back to enjoying the **moments that matter.**

Our experienced robotics-trained surgeons help you feel better, faster.

Three years ago, MedStar Health was the first in the Southern Maryland region to introduce patients to the benefits of robotic surgery. Seven surgeons at **MedStar St. Mary's Hospital** have now performed more than 800 procedures with the da Vinci system.

From bariatrics and general surgery to gynecology and urology, patients who undergo minimally invasive robotic surgeries typically experience:

- Smaller incisions
- Less pain
- Faster healing times

We're proud to be leading the way with cutting-edge techniques—all offered conveniently close in Leonardtown.



Visit **[MedStarHealth.org/Robotics](https://www.MedStarHealth.org/Robotics)** to learn more.



MedStar Health



IS PROUD
TO SPONSOR

CHESAPEAKE ORCHESTRA

JEFFREY SILBERSCHLAG · MUSIC DIRECTOR





2024 SEASON

JUNE 21

Bach and Buds!

Page 11

JUNE 28

We Remember The Duke on his 125th Anniversary

Page 13

JULY 5

It's a John Williams 4th, plus 1812 & FIREWORKS!

Page 15

JULY 12

The Warp Trio joins in!

Page 17

JULY 19

Europe and The Jazz Influence

Page 19



The Chesapeake Orchestra wishes to thank St. Mary's College of Maryland, Peggy Aud and the Events SMCM, SMCM Facilities, The Arts Alliance, and SMCM Public Safety for making River Concert Series a great venue.

Thanks to Robert C. Hayes Operations and Production Coordinator.

Special thanks to Calm Reflections Photography and Jim Tidwell.

Thank you to Ridge Rescue Squad and Bay District Fire Department for providing first aid.

Program design: Nell Elder



Founded in 1994 by Jeffrey Silberschlag, the Chesapeake Orchestra is dedicated to developing the availability of cultural, diverse, and enlightening musical experiences for the whole family. The Orchestra is comprised of some of the finest performers in the nation. It has performed with these same players over the past 23 years and has developed its own distinctive beautiful sound. St. Mary's College students join the orchestra as well, playing side by side with their teachers. The Chesapeake Orchestra has performed at the River Concert Series since its inception in 1999, and they also perform regularly at a number of other venues in the area such as Leonardtown Square, Sotterley Plantation, Woodlawn Estate & Winery, and National Harbor.

MAESTRO

Jeffrey Silberschlag



JEFFREY SILBERSCHLAG has distinguished himself in the world of music, performing as conductor and trumpet soloist throughout Europe, the United States, Russia, China, Japan, and Israel. His performances have been described as “compelling” by Germany’s Kolnische Rundschau; “extraordinary” by Italy’s L’Arena; and “outstanding” by Fanfare Magazine.

Mr. Silberschlag is music director and conductor of the Chesapeake Orchestra and River Concert Series, co-director of the Alba Music Festival and its Young Artists Program in Northern Italy, The St. Mary’s College of Maryland Symphony Orchestra and The Maryland Youth Symphony Orchestra.

On November 15, 2011, at a performance in Prague, Mr. Silberschlag received the Prize for Artistic and Cultural Activities from the European Union of the Arts, for his lifetime achievement in classical music as a conductor and trumpeter. In December 2013, Mr. Silberschlag was inducted into the Society Famija Albeisa of Italy. Mr. Silberschlag is a recipient of the Bowie State University’s Octave Higher Award, awarded for his work fostering collaboration between diverse communities. He is a recipient of an honorary Doctorate presented by the Big Brother-Big Sister of Southern Maryland Award, and a co-winner of the Norton T. Dodge award for creative and scholarly achievement.

He serves as Head of Music Performance and has served as the Music Department Chair three different times, for a total of twelve years, in the Music Department at St. Mary’s College of Maryland. He is the recipient of the Steven Muller Distinguished Professor

in the Arts Award, and has been a faculty member since 1988.

Mr. Silberschlag has appeared as guest conductor with the London Symphony Orchestra, London Philharmonic, St. Petersburg Soloists, Orchestra Filharmonici di Torino, Symphony Orchestra of Rumania, Bulgarian Philharmonic, La Scala Virtuosi, Prague Chamber Orchestra, Salzburg Chamber Orchestra, and the Moscow Academy Chamber Orchestra. He has collaborated with such soloists as Anne Akiko Myers, Hilary Hahn, Jose Cueto, Yi Jia Hou, and Lara St. John (violinists); Maxym Anakushin, Bruno Canino, Brian Ganz, Eliza Garth, and Jeff Chappell, (pianists); Giuseppe Nova and Yoshimi Oshima, (flutists); Giampiero Sobrino and Jon Manasse, (clarinetists); Catrin Finch, (harpist); Judy Blazer, Kate Baldwin, and Melissa Errico, (Broadway vocalists); Vonda Shepard, Jane Monheit, Ethel Ennis, and Hilary Kole, (Jazz vocalists); Maria Kanyova, Tonna Miller, Susan Narucki, and Olivia Vote, (Sopranos); John Wallace, Andrew Balio, and Terrence Blanchard, (trumpeters).

In addition, Mr. Silberschlag has combined musical genres by blending orchestral performances with such artists as The 5th Dimension, Blues guitarist Linwood Taylor, the Paul Reed Smith Band “Dragons,” the No Class

Today Bluegrass Band, and the Brazilian band, Grupo Saveiro.

A recording of Boris Blacher’s chamber opera “Romeo and Juliet” with Mr. Silberschlag as the conductor was released on Albany records to much acclaim.

He has directed premieres of works by composers Morton Gould, Lorenzo Ferrero, Ludovico Einaudi, Paul Chihara, Chou Wen-Chung, David Froom, Kenji Bunch, Judith Shatin, Scott Wheeler, Perry Goldstein, Nathan Lincoln-DeCausatis, Lou Karchin, Vivian Adelburg Rudow, Judah Adashi, and William Thomas McKinley.

He has presented master classes at the Kyoto University of Performing Arts, Japan; the Prague Conservatory, Czech Republic; the Royal Academy of Music in London, UK; the Beijing Central Conservatory in China; the Aosta Institute for Music, Italy; and he has directed in performance the orchestra of The Cleveland Institute of Music.

Mr. Silberschlag has held principal trumpet positions with the Italian National Symphony RAI- Torino, Jerusalem Symphony, and the New York City Opera National Company.

Recent releases include two re-releases of his recordings on Naxos, “The Music of Morton Gould” and “The American Trumpet,” and a world premiere of Arnold Saltzman’s Choral Symphony No. 4, “The Halevi,” with The Romanian State Symphony. Of his recording of McKinley’s “And the Presidents Said,” with narrator Ben Bradlee at Abbey Road Studio, Fanfare Magazine wrote that he is “a virtuoso trumpeter par excellence whose conducting is equally praiseworthy.”

Together with his wife Deborah Greitzer, their families include seventeen professional musicians. In 2024 Maestro Silberschlag was acknowledged as one of “America Who’s Who” by Marquis Publishing.



DEBORAH GREITZER

Executive Director of the
Chesapeake Orchestra

Deborah Greitzer, Executive Director of the Chesapeake Orchestra, has divided her career equally as a performer and artistic director. She has held principal bassoon positions with the Jerusalem Symphony Orchestra, New York City Opera National Company, Madeira Bach Festival, Alba Music Festival, the Italian Radio/Television Symphony Orchestra RAI-Torino, the Music Today Series in New York, and the Chesapeake Orchestra. She has performed with many of the world's leading conductors, including Maxym Shostakovich, Rudolph Barshai, Gary Bertini, Gerard Schwarz, Raymond Leppard, George Manahan, Eliahu Inbal, Noam Sheriff, Hans Vonk, Vladimir Valek, and James Galway.

As soloist, she has appeared with the Jerusalem Symphony in Israel, the Hungarian Virtuosi in Budapest and Zagreb, the Czech Radio Orchestra in Prague, the Maryland Bach Aria Group in Verona, and the Chesapeake Orchestra. She has also given solo performances at Carnegie Hall, The Juilliard School, the New England Conservatory, Purchase University, Avery Fisher Hall, the Prague Rudolfinum, and the Jerusalem Theatre. Ms.

Greitzer can be heard on Nonesuch Records Grammy Award-winning recording of George Perle's Serenade No. 3. She has recorded with the Maryland Bach Aria Group on Crystal Records, and as soloist on MMC and Delos Records. Composer William Thomas McKinley wrote two concertos for her that she premiered and recorded with the Seattle Symphony and Prague Radio Orchestra, Gerard Schwarz, conductor.

Ms. Greitzer is a graduate of The Juilliard School and held a graduate fellowship at the Yale School of Music, Yale University. She is a two-time winner of the Artists International Prize for Chamber Music, recipient of the George Wellington Miles Award at Yale University, and a winner, with the Maryland Bach Aria Group, of the Norton T. Dodge Award for Creative and Scholarly Achievement.

She was invited by Pierre Boulez as the only American finalist for the IRCAM Ensemble in Paris, France, Pierre Boulez, Music Director.

Ms. Greitzer was the Artistic Director of the New York Times Foundation Young Performers Series, produc-

ing concerts in Bryant Park, Union Square Park and Battery Park. She was also the director of the Tidewater Ensemble at St. Mary's College of Maryland. During that six year period, the Tidewater Ensemble made its first appearances at Weill Recital Hall at Carnegie Hall, the Baltimore Museum of Art, and the Corcoran Gallery, Washington, D.C. The Ensemble premiered works by numerous composers, including Morton Gould, William Thomas McKinley, David Froom, Lorenzo Ferrero, Vivian Adelberg Rudow, Paul Chihara, and Chou Wen-Chung.

Ms. Greitzer performed in the 1998 Broadway revival of "The King and I" with Marie Osmond and at the Kennedy Center with Haley Mills. She was also the bassoonist with Anthony Newley, in the New York revival of his show, "Stop the World, I Want to Get Off." She also worked with playwright Arthur Miller, and was the bassoonist for the New York premiere of his play, "Up from Paradise."

Ms. Greitzer is adjunct faculty in the Music Department of St. Mary's College of Maryland.



SINCE 1994 the Chesapeake Orchestra has provided world-class professional music to over 600,000 appreciative people in Southern Maryland. From the beginning, the orchestra's repertoire has been broad, and its musicians equally versatile. An evening's programming often features symphonic works partnered with other diverse genres, such as blues, jazz, and rock. The Chesapeake Orchestra has premiered many works, including those by William Thomas McKinley, Paul Chihara, David Froom, Scott Wheeler, Nathan Lincoln-DeCusatis, Jeffrey Mumford, Jan Raats, Chen Yi, Kenji Bunch, and Judith Shatin, Vivien Adelbergudow, Perry Goldstein, and Judah Adashi.

Since the Chesapeake Orchestra took up residency at St. Mary's College of Maryland at the River Concert Series, the Series has become the cultural and tourist destination for Southern Maryland, winning the Governor's Tourism Impact Award. It was noted in a recent article that concerts performed by the Chesapeake Orchestra have brought the community together, as about 5,000 people come every Friday evening from mid-June to the end of July to enjoy orchestral concerts that offer programs with musical themes designed to reach the broadest possible audience. Genres such as bluegrass and blues are often fused with orchestral instrumentation. Guest artists have included the Ahn Trio, violinists Anne Akiko Meyers and Lara St. John, country star Suzy Boggus, Broadway star Kate Baldwin, jazz vocalist Hilary Kole, and jazz trumpeter Terence Blanchard. The Chesapeake Orchestra has performed over 20 concerts at the National Harbor.

On September 5, 2014, The Chesapeake Orchestra was the first ever orchestra to play at Thomas Jefferson's Monticello, although it had been Jefferson's dream to have a resident orchestra.



Hilary Kole



Guiseppe Nova



Anna Kiko Meyers



Terence Blanchard



CHESAPEAKE ORCHESTRA



1st VIOLIN

Jose Cueto,
Concertmaster*
Netanel Draiblate assc.
concertmaster
Heather Haughn
Asst Concertmaster+
Brent Price
Celeste Blase
Sheng Wang



2ND VIOLIN

Tracey Burke
Maribeth Frank
Adina Vallandingham
Shelley Mathews
Madison Rechtenwald =
Dylan Parham=



VIOLA

Julius Wirth+
Elizabeth Stahr
O'Hara
Bryce Bunner
Colin Webb
Katherine Lawhead

CELLO

Suzanne Orban+*
Amy Stennett
Jihea Choi
Sentiah Cole=
Alara Sipahi=

BASS

Robert Kurz
Bill Hones
Milad Daniari

FLUTE

Karen Johnson+*
Katheryn Farenish
Khepesh Imhotep=

OBOE

Emily Tsai
Mark Christianson
Michael Homme
William Capon=

CLARINET

Janice Murphy+*
Michael McDonald
Randy Riffle

BASSOON

Erik Dirksen+
Maude Fish
Kari Shea
Deborah Greitzer*
Chris MacFarlane

SAXOPHONE

Rick Humphries+

HORN

Michael Hall
Chandra Cervantes
Max Cripe
Ken Bell
Mark Hughes

TRUMPET

Zachary Silberschlag+ ('11)
Fred Marcellus

TROMBONE

Bryan Bourne+*
George Allen

BASS

TROMBONE
Jerry Amoury

TUBA

John Cradler+
Daniel Walley

TIMPANI

Glenn Paulson
Bob Jenkins

PERCUSSION

Bob Jenkins
Shari Rak



+ principal

-- co-principal

* SMCM music faculty

◇ SMCM student

=Maryland Youth Symphony Orchestra

** On Leave to the Music Academy of the West

Bryan Bourne
Orchestra Personnel
Manager

Robert C. Hayes
Operations and Production
Coordinator

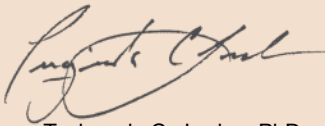
WELCOME to the 26th annual River Concert Series at St. Mary's College of Maryland. We're happy to have you visit our beautiful waterfront campus and our noteworthy sunsets over the river.

We extend a heartfelt appreciation to our Professor of Music Jeffrey Silberschlag, the visionary music director of the Chesapeake Orchestra, for his talent, boundless energy and unwavering dedication to the River Concert Series. We also extend our gratitude to the Chesapeake Orchestra musicians, including our esteemed students, faculty and alumni, whose participation is integral to the success of this event.

For more than a quarter century this Southern Maryland staple has brought community and the arts together right here on Townhouse Green to enjoy classical music, Broadway stars, pop culture, and opera from the comfort of your lawn chair while you enjoy dining al fresco.

We take pride in our College's role as a community hub for intellectual engagement, entertainment and more. Leadership, innovation, creativity, integrity and collaboration are more than just words here—they're the foundation of everything we do.

As each summer passes, we are reminded of the enduring power of the River Concert Series to bring our community together. Let us raise a toast to the future, to the years of music and togetherness that lie ahead.



Tuajuanda C. Jordan, PhD
President, St. Mary's College of Maryland



For more than a quarter century this Southern Maryland staple has brought community and the arts together right here on Townhouse Green.



DONATION BUCKETS

When you see these **BUCKETS** circulating each week, please know that your donations help St. Mary's College of Maryland cover the cost of hosting the River Concert Series.

THANK YOU for helping to keep these performances free to the community every summer.

Now in its 26th season, the River Concert Series has earned two Governor's Awards for the Arts, Tourism and Community Economic Development.

**GIVE
TODAY:**



SMCM.EDU/
GIVE

ST MARY'S
COLLEGE of MARYLAND

The
**NATIONAL
PUBLIC
HONORS**
College

**THANK
YOU
FOR
YOUR
SUPPORT**

JUNE 21 BACH *and* BUDS!

JEFFREY SILBERSCHLAG, MUSIC DIRECTOR

TONIGHT'S PROGRAM

José Cueto *violin*

Rev. Z. Mark Smith *bassoon*

Kathryn Farenish *flute*

Mark Christianson *oboe*

Jeffrey Silberschlag *trumpet*

JS Bach

Concerto for Oboe, Violin,
Strings, and, continuo
BWV 1060 R

Antonio Vivaldi

Summer from the Four Seasons
for violin, strings, and continuo

Concerto in G Major

Johann Joachim Quantz (1745)
for flute and strings
Kathryn Farenish, flute

GF Handel

Suite for Trumpet, strings
and continuo in
D Major HWV 341



MARK SMITH

Bassoonist Z. Mark Smith is new to southern Maryland as the rector of St. Andrew's Episcopal Church in Leonardtown. A native of Philadelphia, Mark is a graduate of the Curtis Institute of Music, a student of Sol Schoenbach and Bernard Garfield. He was a member of the Atlanta Symphony Orchestra for fifteen years prior to ordination. He has appeared on over thirty recordings and has played in such venues as the Concertgebouw in Amsterdam, the Musikverein in Vienna and numerous times in Carnegie Hall. He has established and participated in several concert series in the parishes he has served, and is delighted to participate in this year's River Concert Series.

MARK CHRISTIANSON

Mark Christianson began playing the

oboe with his first teacher, Richard Killmer, Professor of Oboe at the Eastman School of Music. Four years later, he received a degree in Oboe Performance from the University of Minnesota. He went on to receive his Masters in Oboe Performance at Northwestern University as a fellowship student of Ray Still, Principal Oboe of the Chicago Symphony Orchestra. He became Principal Oboe of the Chicago Civic Symphony and then went on to a professional career as an Oboe and English Horn player in the State of Mexico Symphony Orchestra and then the Hong Kong Philharmonic Orchestra.

When he returned to the United States, he joined The United States Marine Band "The President's Own" in Washington D.C., with 21 years of

service, playing for Presidents, dignitaries, also playing under famous musicians such as John Williams and many others as well. He freelances as a professional Oboe and English Horn player in the Washington D.C. area, playing in solo positions for many of the leading local orchestras and Opera companies as well. He lives with his wife and two children in Olney, Maryland.

KATHRYN FARENISH

American Flutist Kathryn Farenish made her solo debut at Carnegie Hall at the age of 16, serving as Principal Flute of the National Wind Ensemble in New York City, and she has been pursuing

Continued on page 12

her passion for music ever since. Noted for her “vibrant tone, superb musicianship, and warm demeanor” and for her “impeccable piccolo playing” by the Washington Classical Review, Ms. Farenish establishes herself as one of today’s rising, versatile artists. Honors include being selected as the winner of the Washington Metropolitan Philharmonic’s Young Artist Competition, the City of Fairfax Band Association Band Director’s Competition, and the winner of the Flute Society of Washington Young Artist Competition, where she performed for flute prodigy, Mimi Stillman.

An active freelance musician in the D.C. Metropolitan area, her professional engagements include work with the National Philharmonic Orchestra, Virginia Symphony Orchestra, Alexandria Symphony Orchestra, Maryland Symphony Orchestra, the Washington Concert Opera, Bach in Baltimore, Bel Cantanti Opera, and the Chesapeake Orchestra.

Ms. Farenish has received both her Bachelor of Music and Master of Music degrees from The Juilliard School, studying with Robert Langevin, Principal Flute of the New York Philharmonic. She also received additional training from the New England Conservatory as a student of world-class flutists Jeanne Baxtresser, former Principal Flute of the New York Philharmonic, renowned solo artist Paula Robison, and former Principal Flute of the National

Symphony Orchestra, Toshiko Kohno.


She currently resides in Fairfax Station, Virginia, where she maintains her private flute studio and enjoys coaching flutists of all levels and ages. As a dedicated music educator, Ms. Farenish regularly performs clinician work for various Elementary, Middle, and High School band programs throughout the Northern Virginia area and serves as a member of the City of Fairfax Band in Fairfax, Virginia. In her spare time, she enjoys reading, seeing the latest cinema, attending concerts, and spending time with her Balinese kitty, Rimsky.

JOSÉ MIGUEL CUETO

Violinist José Miguel Cueto was born in Puerto Rico, where he received his early musical training. After graduating from the Pablo Casals Conservatory of Music of Puerto Rico, he was awarded scholarships from the Institute of Culture of Puerto Rico and the Peabody Conservatory of Johns Hopkins University, where he earned both his bachelor's and master's degrees, studying under laureate violinist, Berl Senofsky. During his time at Peabody he served as concertmaster of the conservatory orchestra and was chosen to perform Vivaldi's Triple Violin Concerto in the "Masters of Today and Tomorrow" concert series with his teachers Senofsky and Ruggiero Ricci, internationally distinguished violinists.

Cueto is in great demand as chamber musician, having performed with the Kennedy Center, Tidewater and Casals Festival Chamber Players, Washington Chamber Society, Melos Ensemble with internationally renowned clarinetist Gervase de Peyer, La Gesse Festival in France, Autunno Musicale Veronese and Alba Music Festival in Italy, and Three World Festival in China. At home with both traditional and contemporary repertoire, he has premiered several contemporary chamber music compositions by composers of the Americas. With longtime collaborator, Argentine pianist Nancy Roldán, he founded Alborada, a chamber music ensemble. As soloist, Cueto has performed in the US, Latin America, Europe, and Asia.


Cueto has been admired by both the public and the critics for his "solid technique, as well as his rich and beautiful tone" (El Mundo, San Juan). STRAD magazine recognized Cueto's Carnegie Hall performance at Weill Recital Hall as "grounded, confident, and superb in all particulars." Cueto is concertmaster of Concert Artists of Baltimore and the Chesapeake Festival Orchestra. He is a recording artist and serves as artist in residence and head of the string department at St. Mary's College of Maryland. He is also lecturer for the Elder-hostel program at the Peabody Conservatory of Johns Hopkins University.



**PIER
450**
ST. MARY'S COUNTY, MD

Spring into Summer


*A beach-chic hospitality destination just 8 miles
from St. Mary's College*




Eat

POV

casual fine dining restaurant
with a waterfront view



Stay



Play

The QUARTERS



eight-room luxuriously
curated motel

THE YARDS

Sunset views, firepits,
kayaks and pier boat access

FOR RESERVATIONS, INQUIRIES AND MORE INFORMATION VISIT

PIER450.COM

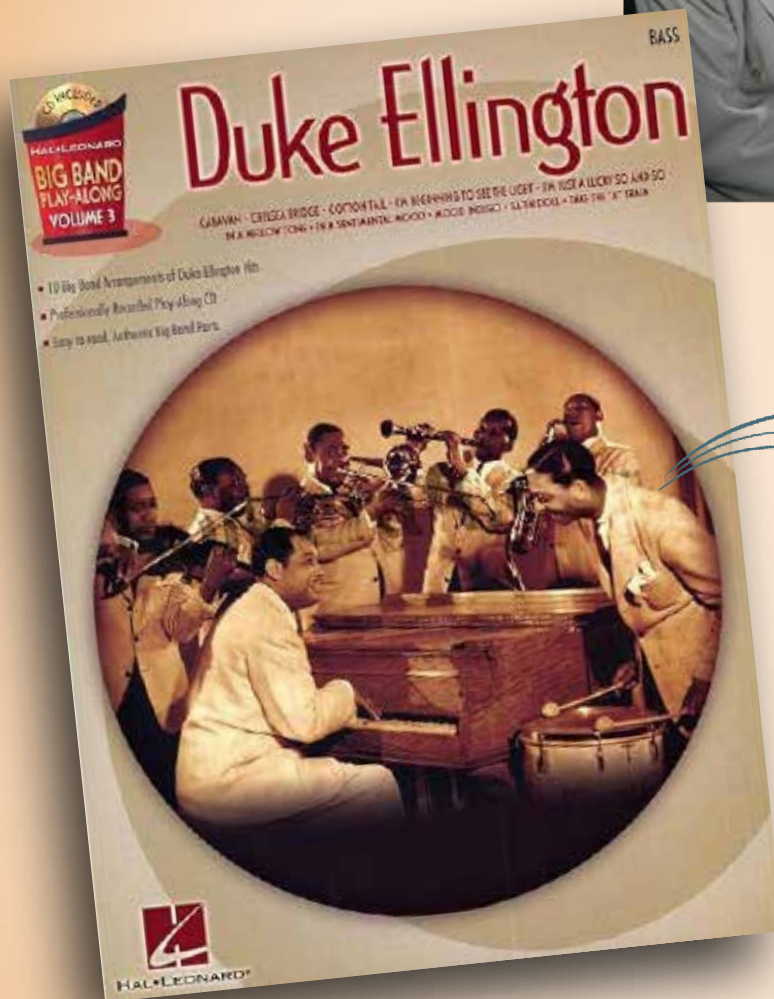
48342 Wynne Rd • Ridge, MD 20680 • (301) 679-3900  

WE remember THE DUKE
on his 125TH ANNIVERSARY

JUNE 28

JEFFREY SILBERSCHLAG, MUSIC DIRECTOR

*Beloved works of
Duke Ellington with
Big Band*



JOIN OR RENEW **TODAY**

Visit www.smcm.edu/events/arts-alliance/ or contact us at artsalliance@smcm.edu to learn more about membership benefits and to join or renew.

Our Mission:

To promote and support cultural and arts-related activities and programs at the College for the enrichment and enjoyment of the Southern Maryland community.

What does the Arts Alliance do?

Your membership contribution:

- **Sponsors the annual River Concert Series and Mark Twain Lecture Series**
- **Supports cultural and arts-related programming**
- **Provides grants for faculty-led initiatives** such as forums and workshops with guest artists and performers
- **Awards cash prizes** to outstanding St. Mary's College students in arts and letters



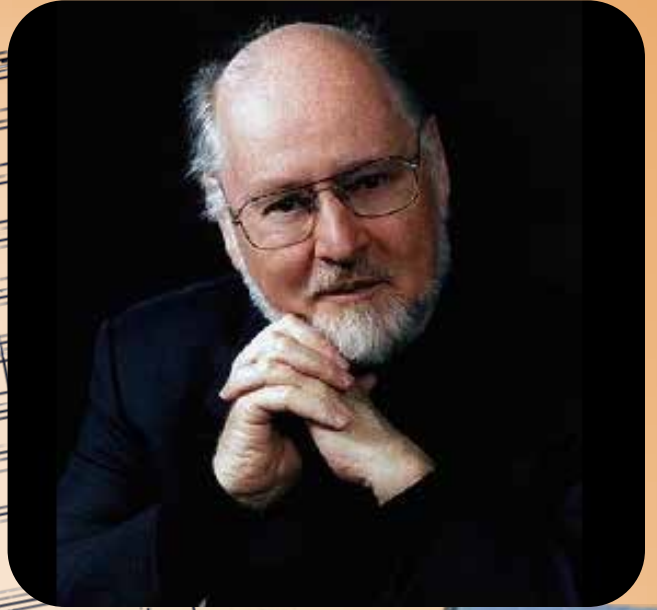
JULY 5 IT'S A JOHN WILLIAMS 4TH

plus 1812 & Fireworks !!!

JEFFREY SILBERSCHLAG, MUSIC DIRECTOR

SUPERMAN MARCH

FROM SUPERMAN





Live your best life in
the region's leading
affordable retirement
community.

Join the waitlist today!

**To learn more or
schedule a tour,
call 301-475-8966.**



22680 Cedar Lane Court
Leonardtown, MD
www.cedar-lane.org



**Raj and Mona and Bollywood
Masala salutes
the River Concert Series**

Coming this Fall!

**CHESAPEAKE
ORCHESTRA**

Jeffrey Silberschlag, music director

The Nancy R. and Norton T. Dodge Performing Arts Center



Check the Chesapeake Orchestra website for details!
www.chesapeakeorchestra.org

JULY 12 JAZZ/CLASSIC FUSION... NOT TO BE MISSED

(you don't know how much you've been missing)

JEFFREY SILBERSCHLAG, MUSIC DIRECTOR

TONIGHT'S PROGRAM

Béla Bartók Romanian Dances

- I. Jocul cu băță
- II. Brâl
- III. Pe loc
- IV. Buciumeana
- V. Poar românească
- VI Mănuntel

Aron Kernis For the Fallen
trumpet and Strings

W4RP FUSION!



W4RP

W4RP

Described as "A talented group that exemplifies the genre-obliterating direction of contemporary classical music" (Columbia Free Times), W4RP (né Warp Trio) is an internationally touring cross-genre chamber music experience. Reflecting the combination of Juilliard trained members juxtaposed with members steeped in rock and jazz styles, the one of a kind trio ensemble can be seen performing classical works in prestigious halls on the same tour where they headline a standing room only show at a rock venue. In addition to their electrifying public performances, they have gained a reputation for their innovative educational workshops with students from grade school through university level.

Maintaining a busy performance schedule, W4RP has performed hundreds of concerts all across the United States, in addition to tours throughout The United Kingdom, Spain, Switzerland, Holland, Germany, West Africa,

and the Caribbean. Highlights of recent seasons include, headlining performances at The LEM Festival for Experimental Music in Barcelona, and the Omaha Under the Radar Festival, being featured guests at the 2020 MASA Jazz Festival in Abidjan, Côte d'Ivoire, Canadian debut at The Vancouver Island Music Festival, a tour of an original Triple Concerto with the ensemble Palaver Strings, a World-premiere of their work for the ensemble, narrator and full orchestra, "Brother Yasuke: The True Story of the Afro-Samurai", and the Sold-Out World premiere of their Triple Concerto for Piano Trio and Symphony Orchestra with the New York City based Urban Playground Chamber Orchestra. They have been one of the honored recipients of a New York Foundation for the Arts Grant, and in the 2020 season, they were the recipients of the Chamber Music America Ensemble Forward and Classical Commissioning grants. In 2023-24, they are looking forward

to appearances at the Moab Music Festival, debuts with the Louisville Community Orchestra and Harlem Chamber Players, and also the recording of their third studio album.

Their education work has led them to numerous Colleges and Universities where they have presented their original workshops and masterclasses in improvisation and creative music making. Recent highlights include, the Royal Northern College of Music (Manchester, U.K.), James Madison University, The North Carolina School of the Arts, Cal State LA, University of the Virgin Islands (St. Thomas), and SUNY Binghamton, among many others.

Individually, the W4RP members hold degrees in performance from the Juilliard School, Cincinnati-College Conservatory of Music, and New York University. The beneficiaries of an incredibly diverse range of education, among the ensemble, they have received chamber music training from members of the Guarneri, Juilliard, Emerson, and La Salle Quartets as well as jazz instruction from figures such as Ray Anderson, Tony Moreno, Dave Pietro, and Mike Richmond.



Leonardtwn
A most exceptional place!

Leonardtwn
**Summer
 Music
 Festival**

Learn more at: VisitLeonardtwnMD.com



ReDiscover

LEONARDTOWN, MARYLAND

Take in the breathtaking waterways as you paddle along beautiful Breton Bay, taste the award-winning wines, dine alfresco in an outdoor cafe, visit a one-of-a-kind indoor marketplace to find that special keepsake or gift, explore the galleries showcasing local artists and enjoy a live concert in Southern Maryland's only Arts & Entertainment District.



Ride the FREE Leonardtown Trolley!

Get all around Town without getting in your car! Every weekend all Summer long- Friday and Saturday night from 5 - 10PM! Visit leonardtwnmd.com/leonardtwnrolley or use the QR Code to Track the Trolley live!

*Track
 the
 Trolley*



JULY 19

EUROPE *and* THE JAZZ INFLUENCE

JEFFREY SILBERSCHLAG, MUSIC DIRECTOR

TONIGHT'S PROGRAM

Thomas Pandolfi, *piano soloist*

Joplin - Rags

Ravel - Piano Concerto in G
Thomas Pandolfi

I. Stravinsky - Firebird Suite 1919



THOMAS PANDOLFI

Thomas Pandolfi is one of the leading pianists of our time, hailed a “phenomenon.” He began his career early on while at The Juilliard School (BM & MM) where the young prodigy caught the influential ear of Vladimir Horowitz, who would become his mentor, and legendary composer, Morton Gould. Since then he has been an audience favorite, selling out the world’s most prestigious stages, including Lincoln Center’s Alice Tully Hall, Strathmore, The Kennedy Center, Kiev Opera House, Bucharest’s Romanian Athenaeum, London’s Cadogan Hall, and many others.

DC Metro Arts calls him, “exhilarating... a rare mix of technical accuracy and cool confidence.” “His artistry and technique were simply astonishing,” said the Metropolitan Arts Reviews. The Washington Post boasted he is a “master of both the grand gesture and the sensual line... Pandolfi’s large-scale pianism seemed under tight control yet in no way muted the passion of his performance... projected with an exquisite sense of lyrical gesture.” “A standout among today’s young pianists... His virtuosity and strength... might have had some believing

that Liszt himself had taken over the keyboard,” said the Asheville Citizen-Times. “The mastery of the scores, the precision of the playing, and the finesse of the expression were all simply spectacular. It was a truly bravura performance, both in the virtuosic and in the reflective pieces, yet one completely without gratuitous exaggerated display,” acclaimed The Boston Musical Intelligencer.

In addition to being recognized as one of the greatest interpreters of the Polish masters such as Chopin, Paderewski, and Godowsky, this

Continued on page 20



versatile pianist has received accolades from everything from Bach to Gershwin, with Morton Gould saying, "It's the finest performance of Gershwin I have heard since the composer himself." His original and virtuosic transcriptions of popular works, such as *West Side Story* and *Phantom of the Opera*, are one-of-a-kind, jaw-dropping, and dramatic encores that keep audiences of all ages returning to his performances again and again.

Mr. Pandolfi is a Steinway Artist and will begin recording for Steinway Spirio later this year. Mr. Pandolfi's performances have been broadcast by PBS, WETA (Washington, DC), WQXR (NYC), WRCJ (Detroit), DCN TV (China), The Sound (DC), and many others worldwide. During his 2019-2020 season, he will complete a 20-state tour of the USA, his fourth tour in China, third tour of the UK, and seventh tour of Romania and Moldova.



SOUTHERN MARYLAND
**FOLKLIFE
CENTER**

ST. MARY'S COLLEGE OF MARYLAND



The SOMD Folklife Center is dedicated to support activities that identify, document, and present the living cultural traditions of Maryland's diverse communities. Located at St. Mary's College of Maryland, the Center has offered a variety of workshops and programs that showcase traditional art forms and help to preserve the unique heritage of the Southern Maryland Region.

The SOMD Folklife Center is funded by a grant from the Maryland State Arts Council

Follow us



**CHECK OUR WEBSITE FOR INFORMATION ABOUT WORKSHOPS
PROGRAMS AND EVENTS** www.somdfolklife.org, or scan the QR Code





89%

of our students participate
in internships, international
experiences or
undergraduate research

65

academic programs



23

varsity sports

10:1

our student-faculty ratio
ensures the personal
attention you're looking for



\$18M+

awarded yearly
in student scholarships
and aid

ST MARY'S COLLEGE of MARYLAND
The National Public Honors College

Learn more at:
www.smcm.edu



JFTAYLOR

INC

Local Defense Contractor
Investing in the Navy's
Mission since 1983.



www.jfti.com



301-862-3939

Calm Reflections Photography

Calm Reflections Photography



Jeffrey Silberschlag
Conducting print
available online at
<http://tinyurl.com/JeffreyConducts>

River Concert Series
2018 posters are still
available online at
<http://tinyurl.com/RiverConcertPoster>

Photographer for the Chesapeake Orchestra.
Fine Art Photography

Visit our website at
www.CalmReflectionsPhotography.com

JAZZ FEST SATURDAY LINEUP



Latrice Carr



Julian Vaughan



Marcus Mitchell
and Joi Carter

Stay at the Inn at Leonardtown
DISCOUNT HOTEL PACKAGES!
See website for info and reservations.

ST. MARY'S COUNTY, MD
POTOMAC
JAZZ & SEAFOOD
FESTIVAL

Weekend of Jazz!
JULY 12-14
2024

www.PotomacJazzFest.com
More info, tickets, discount packages, discount hotel nights and more.



PARTNERS



HOTEL WELCOME RECEPTION

FRIDAY 2 - 4 PM - FREE MUSIC by
Higher Standards at the Inn at Leonardtown!

Fun All Day in Leonardtown!

AFTER PARTY AT BRÜ

SATURDAY 10 PM
Free admission; food and drinks separate cost.

L'TOWN JAZZ CRUISES

Friday and Sunday

More Cruises Added! See website for info/ tickets.

Friday Jazz in Leonardtown

Friday, July 12 / All day throughout Leonardtown!

Kick off your weekend
with dining, shopping and
a FREE jazz concert in
Leonardtown at College
of Southern Maryland,
Leonardtown Campus.



FRIDAY, 5 - 7 PM - Music by Causal Groove.

Jazz Fest THE MAIN EVENT

Saturday, July 13, noon to 8 p.m. / St. Clement's Island Museum

-----Opener 1 PM----- **\$95 General / \$250 VIP**
LATRICE CARR
-----Second Act 3:15 PM-----
MARCUS MITCHELL & JOI CARTER
-----Headliner 5:30 PM-----
JULIAN VAUGHAN

NEW THIS YEAR! Limited trolley and boat transportation
from Leonardtown to the main event!

Jazzin' Sunday in Leonardtown

Sunday, July 14 / All day throughout Leonardtown!

Enjoy jazz cruises, brunch, shopping, wine tastings and
more throughout the town.

Individuals can make a difference!

The Chesapeake Orchestra does not solicit donations during the concerts at St. Mary's College of Maryland but that doesn't mean that we don't need your help producing these concerts and sustaining The Chesapeake Orchestra's presence at these concerts.

Please considering making a donation to The Chesapeake Orchestra there are many ways to help:

Sponsor a Concert

The ultimate commitment to the River Concert Series! Have a banner with your name displayed over the concert stage, be listed in the program and in the advertising of the concert you sponsor.

Make a Contribution

This can be done throughout the year! Whenever you think about how much you enjoy the River Concert Series and want to make sure the Series continues, consider sending a contribution. Please notice in the

program our Special Appreciations page, where all our contributors are listed, and join the list.

Dedicate a Selection

A most extraordinary way to bestow an honor! Choose a selection from the program and dedicate it to a special person. Your dedication will be announced that evening by the conductor.

Please give often — any amount is appreciated.

A donation to the Chesapeake Orchestra will enable us to bring the finest quality performances to the Southern Maryland Region. 100% of Your Contribution to the Chesapeake Orchestra supports the musicians and the musical performances. The Chesapeake Orchestra, Inc. is a 501(c)(3) and your donation is tax deductible

Please visit the Chesapeake Orchestra website at:
www.chesapeakeorchestra.org

2024 VENDORS

Blue Wind Gourmet

Calvert Crabs

Crumbly

Freeze Daddy MD

Grizzly

Heidi's Eats

Kona Ice

The Salted Scoop

Sweet Tooth

Travelin Tom's Coffee

Wildewood BBQ Company

Inclement Weather Information

Changes in concert location or cancellation due to inclement weather will be posted on the Chesapeake Orchestra home page (www.chesapeakeorchestra.org)

In case of a weather emergency during a performance, public safety officers will assist the audience to their cars safely if the concert is cancelled.

Townhouse Green is
our performance area, so
we appreciate your cooperation.

**NO SMOKING
NO PETS
NO SOLICITATION**



Like us on Facebook
www.facebook.com/ChesapeakeOrchestra



Follow us on Twitter
[@chesapeakeorch](https://twitter.com/chesapeakeorch)



Subscribe to our
YouTube Channel



In 2022, the **Nancy R. and Norton T. Dodge Performing Arts Center** opened as the home for music, dance and integrated performing arts. Come see why this has become Southern Maryland's newest cultural hub.



The
**NATIONAL
PUBLIC
HONORS**
College

THANK YOU!

CHESAPEAKE ORCHESTRA

Jeffrey Silberschlag, music director

The Chesapeake Orchestra extends its sincere appreciation to these individuals who ensure the continuation of free top-quality summer concerts.

Individual Donors

Grants and Foundations
Maryland State Arts Council
Opalack Foundation
St. Mary's County Arts Council
Stultz Foundation

Above \$5,000

Peggy Binzel and Paul Opalack
Cynthia and James Stultz
D. Matthew Voorhees

\$3,000 - \$5,000

Mike and Cindy Pototsky
Robin and Mark Witte
Jeffery & Deborah Silberschlag
Kay Family Foundation

\$1,000 - \$2,999

Sam and Carol Bergeson-Willis,
James and Barbara Bershon
Bonnie Currie Blades
Mary Catherine Bunting
Ronald & Susan Williams

Mike & Linda Colina
Thomas & Helen Daugherty
Bonnie Green and Bill Edgerton
Gail Harmon
Tim and Cherie Heely
Hillary Howard and David Statter
Bert and Beverly Johnston
Paul Koch
John and Julie McAllister
Margaret Rice
Frank and Sue Taylor
Alice Tetelman
Diana and Albert Voorthuis
John and Carolyn Williamson

\$100 - \$999

Karen Abrams
Robert Aldridge
Frank and Christina Allen
Bonnie Currie Blades
Bollywood Masala
Erna Brown
Joseph and Andrea Carbonaro
Howard Childers
David Densford and Terry Larus

Andrew Dowdell
Carole Engle
Pat and Nell Elder
Laurie Ford
Marie and Jim Franklin
William and Katherine Glascock
Don and Marylouise Graf
Nancy Graf and Dave Vollmer
Michael Judd
Dr. Mark and Amy Henderson
Martha Jones
Joyce Judd
Bruce and Suellen Keiner
Mike and Mary Ann Kibler
Paul and Kathy Koch
Howard Kympton III
Judith Landis
Jane and Craig Messersmith
Robert and Linda Milburn
Kenneth and Sigrid Morris
Tom Nichols
John and Suzanne Patterson
Robert and Eula Prine
William Rutter
Louise Snell
Joyce and Richard Schwartz
Virginia and Charles Stein
John and Linda Wharton
John Zwarich

\$10-\$99
Frank Crea





Guy Distributing Co., Inc.
Leonardtown, Md.
Serving St. Mary's County
For Over 85 Years



Proudly supports

The River Concert Series

**Help us make an impact on
the arts in our community.**

Visit our website
to learn more at:
www.smcart.org





ALBA MUSIC Italy & USA FESTIVAL

The Alba Music Festival celebrated its 21st Anniversary this past Spring by producing 40 concerts in 10 days. Performers came from all around the world.

Among the highlights, Chesapeake Orchestra concertmaster, José Cueto, was joined by Romanian State Symphony Concertmaster, Teodore Radu, and Diego Gabete from The UK famed orchestra, The Hallé, for a performance of Vivaldi's Concerto for three violins and string orchestra. Zachary Silberschlag and Hungarian trumpeter, Szabolcs Koczur were featured in a new work for two piccolo trumpets called Vivaldissimo, and Nathaniel Silberschlag was the featured soloist in an all-Mozart program, in Mozart's Horn Concerto No. 3.

Over the 20-year presence of The Alba Music Festival, Alba, in the North of Italy has become a real tourist destination.

Joining us for the festival should be on everyone's list of must places to see.



The Maryland Youth Symphony Orchestra



The Maryland Youth Symphony Orchestra based in Baltimore, now under the direction of Jeffery Silberschlag, is a group of talented young performers between the ages of 12-19. These young artists are selected by competitive audition and are immersed in the great tradition of the orchestral repertoire.

Recent concerts were held at St. Ann's Cathedral in Washington, DC and Bowie State University's new Performing Arts Center. Most rehearsals are held in the Catonsville's area. Repertoire this past season included works of Beethoven, Handel, Haydn, Brahms and Dvorak.

For information regarding auditions for the 2024-2025 season, visit www.marylandyouthsymphonyorchestra.org. The Maryland Youth Symphony Orchestra's 2024- 2025 auditions and concert season will be announced in July.



2024 St. Mary's College of Maryland /Chesapeake Orchestra

These are students of St. Mary's College. They were selected by application and recommendation. They perform with the Chesapeake Orchestra but are particularly focused on Arts Administration during this summer, gaining hands-on experience supporting the complex operations of the River Concert Series, SMCM Music Department and the Chesapeake Orchestra. From this experience, St. Mary's College has produced an impressive list of alumni, working at the highest level in professional performing arts administrative careers.

Christina Sayles *viola, bass*

Aldous Simms-Clark *trombone*

Kat Adams *trumpet*

Austin Olewnik *trumpet, French horn*

INTERNS



SERIES SPONSORS

CHESAPEAKE ORCHESTRA Donors

Chesapeake Orchestra Donors

The Chesapeake Orchestra donors are a special group of dedicated people who have supported the Orchestra directly and generously. Without our cherished donors, the Chesapeake Orchestra, and River Concert Series programming would be significantly diminished. Please consider making a donation. Look for us in the Orchestra Hospitality House at the concerts, or online at chesapeakeorchestra@gmail.com and chesapeakeorchestra.org



DCS Corp

A proud member of the Patuxent River community for more than 30 years, DCS is excited to be a sponsor of the River Concert Series. Founded in 1977, DCS is an employee-owned company providing advanced technology, engineering, and management solutions to government agencies in the national security sector. We operate from 20+ locations nationwide including Lexington Park, Maryland and our Alexandria, Virginia headquarters. Our engineers, scientists, analysts and managers work side-by-side with customers every day to solve complex technical challenges. We provide a full range of weapons systems acquisition expertise that has made us a technical services industry leader supporting the U.S. Navy, U.S. Army, U.S. Air Force, U.S. Marine Corps and other DoD and non-DoD agencies.

At DCS, employees are not only the essence of the company—we are owners. Every employee has a direct path to an ownership stake in the company through the Employee Stock Ownership Plan (ESOP). Being an ESOP Company reinforces our core values, promotes a culture of ownership, and allows us to share in the company's growth and prosperity. The transformative ideas, commitment to quality, and entrepreneurial spirit that characterize our employee-owners allow us to ensure the success of each customer's mission and actively contribute to the well-being of the Nation. For more information, visit: www.dcsCorp.com.



Maryland State Arts Council

For the curious, the creative and the culturally-minded, Maryland is an especially lively place to live. And, the overwhelming majority of Marylanders express a deep appreciation—and pride—for the presence of art and artists in their communities, with 81% of those surveyed in our recent Statewide Survey of the Arts in Maryland agreeing, "a vibrant arts community makes Maryland a better place to live."

The Maryland State Arts Council (MSAC), an agency of the Maryland Department of Commerce, Division of Tourism, Film and the Arts, is pleased to provide an annual grant to St. Mary's College of Maryland's River Concert Series. Events such as this outstanding concert series are a window into the countless arts opportunities available to residents and visitors across our state.

The MSAC thanks the River Concert Series for its ongoing contributions to Maryland's cultural vitality. To learn more about the Maryland State Arts Council and its numerous programs and resources, visit www.msac.org.



St. Mary's County Arts Council

St. Mary's County Arts Council is proud to be a sponsor of the River Concert Series. Our mission is to increase an aware-

ness of the value of the arts in St. Mary's County as they enhance the quality of our community and individual lives. This special sponsorship opportunity allows us to give support to acclaimed guest artists. As a subsidiary of the Maryland State Arts Council, the Council reviews requests and awards grants to local arts organizations, the Board of Education, and the Department of Recreation to fund arts programs. The Council also awards scholarships to graduating high school students who have demonstrated excellence in visual arts, performing arts, theater, and arts education, as well as sponsorships to local artists. St. Mary's County Arts Council, designated by the IRS as a 501(c)(3) non-profit, fosters and encourages the development of the arts and artists in St. Mary's County. We are very pleased to be part of the many businesses that show their support for the arts as sponsors and advertisers of River Concert Series 2024.



Arts Alliance St. Mary's College of Maryland Arts Alliance

The Arts Alliance of St. Mary's College of Maryland is pleased to be a full-series sponsor and serve as host for the 2024 River Concert Series. The Arts Alliance is a volunteer organization that promotes cultural and arts-related activities and programs at the College for the enrichment and enjoyment of the Southern Maryland community. The River Concert Series is an outgrowth of the Arts Alliance's annual summer solstice concert, which began more than 25 years ago.

Come to our booth to join the Arts Alliance to help support the concerts and our other cultural and arts-related activities.

CONCERT SPONSORS



BAE SYSTEMS

BAE Systems

As a global defense, aerospace and security company, BAE Systems delivers products and services for air, land, sea and space, as well as advanced electronics, intelligence, security, and IT solutions and support services. Our dedication shows in everything we design, produce and deliver—to protect those who protect us in a high-performance, innovative culture. We push the limits of possibility to provide a critical advantage to our customers where it counts.

BAE Systems is proud to sponsor the 2024 season of the River Concert Series. As one of the largest employers in St. Mary's County, we strive to be a good As neighbor and a strong community partner, supporting organizations that make a positive impact. More than 800 of our employees call Southern Maryland home, volunteering as your local youth coaches, rescue squad members, and veterans' advocates. For more information or to join our team, please visit www.baesystems.com.



Cole Travel

Cole Travel, an American Express repre-

sentative, specializes in leisure, group, and corporate travel. We want to book your air, cruise, hotel, tour, and car for your next pleasure or business trip. We strive to offer excellent service with quality products and programs to meet your unique travel expectations.

Cole Travel is a family owned business with 39 years of travel experience. Our leisure travel department specializes in cruises, tour packages, and hand-tailored travel. Cole Travel is a CLIA (Cruise Line International Association) member as well as an ASTA (American Society of Travel Agents) member. Our agents are well versed in specialty vacation travel and can design exciting, romantic, adventure, or spa escapes, including island vacation packages, exotic destinations, safaris, romantic getaways, luxury cruises, or honeymoon packages.

Contact us. We look forward to exceeding your expectations.



Heidelberg Patterson Welch Wright

Heidelberg Patterson Welch Wright handles complex commercial litigation cases, including business torts, breaches of contract, and trade secret theft, and it typically represents small or

emerging businesses under alternative fee arrangements. Its attorneys litigate such cases across the country and remain ready, willing, and able to fight its clients' adversaries and vindicate their clients' rights.



KBR

KBR Government Solutions ensures mission success for customers on land, at sea, in the air, and in space and cyberspace. We create value and drive innovation by combining engineering, technical and scientific expertise with our full life cycle capabilities, mission knowledge and future-focused technologies. We are known for excelling in complex and extreme environments and trusted to overcome the nation's most pressing challenges. When it's mission critical, customers call KBR first - We Deliver.



Northrop Grumman

Northrop Grumman is a leading global security company providing innovative systems, products, and

solutions to government and commercial customers worldwide, offering an extraordinary portfolio of capabilities and technologies for applications from undersea to outer space and into cyberspace.

O'Brien Realty

THE *Best* OF SOUTHERN MARYLAND

O'Brien Realty

We offer over 26 years of continuous real estate experience in Southern Maryland. With our in-depth knowledge of the area, it's our pleasure to provide the following services: Home Buyer Services, Seller Services, Commercial Real Estate, Property Management, Homes for Lease, Lots and Land, Mortgage Services, Title Services

We are locally owned and operate out of 5 offices spanning 3 Maryland counties: Lexington Park and Waldorf offices offer more houses, condos, and town-homes as well as relocation services for Patuxent Naval Base personnel and contractors. Prince Frederick, Solomons & Charlotte Hall offices offer more houses, rural properties, farming estates, lots, land, and also town-homes and condos.

Our extensive knowledge of the area allows O'Brien Realty agents to specialize in first-time homeowners, waterfront real estate, horse properties, and short sales.

Raytheon

Raytheon is proud to sponsor the River Concert Series once again this year. We value our strong ties with NAS Patuxent River, Naval Aviation, and the local St. Mary's County community. The River Concert Series is a great opportunity for us to support a renowned widely-attended community event. Raytheon Company, with 2013 sales of \$24 billion, is a technology and innovation leader specializing in defense, security and civil markets throughout the world. With a history of innovation spanning more than 90 years, Raytheon provides state-of-the-art electronics, mission systems integration and other capabilities in the

areas of sensing; effects; and command, control, communications and intelligence systems, as well as a broad range of mission support services. With headquarters in Waltham, Mass., Raytheon employs 63,000 people worldwide.

Sabre

SABRE SYSTEMS, INC.

Sabre Systems, Inc., has been providing mission-focused technology solutions and services to Department of Defense, Federal Civilian, and commercial customers for nearly 35 years. We support the ever-evolving areas of advanced communication technologies, cyber, systems and software engineering, digital transformation, and enterprise data management. Sabre provides innovative results to meet the critical demands of today with an emphasis on scalable solutions to support the mission needs of tomorrow. Sabre is proud to be a part of Southern Maryland and has been providing support to our defense customers, our incredible workforce, and the community in Southern Maryland for more than three decades. To learn more about the impactful work we are doing, or how you can be a part of our team, visit: www.sabresystems.com.

SPALDING

CONSULTING, INC.
IT, FINANCIAL, AND PROGRAM MANAGEMENT SPECIALISTS

Spalding Consulting, Inc

Spalding Consulting, Inc., has provided information technology, cyber security, program management, and financial management solutions to NAVAIR and NAWCAD since 2001. Spalding, founded in Lexington Park, MD, employs skilled and talented professionals who provide expert-level support to the Department of Defense. Smarter, collaborative, fact-based decision making coupled with a reputation for excellence has accelerated the growth of the organization as a leader in Information Technology (IT), Program Management and Financial Management solutions. For career opportunities, visit: www.scipax.com/careers/.

Taylor

GAS Co.

Taylor Gas Company

Taylor Gas Company is delighted to be a sponsor for River Concert Series 2024 and proud to be sponsor since 1999. Taylor Gas is a family-owned and managed propane gas marketer, located in Lexington Park, Maryland. Since 1950, our family has delivered the commitment of propane energy sales to our residential, commercial, and agricultural customers by providing reliable service and dependable gas appliances. Whether your need for propane gas service is large or small, it's nice to know that there is a "Hometown Propane Company" you can count on in Southern Maryland.



Taking the LEAD

The Campaign for St. Mary's College of Maryland



How HIGH Can We FLY?

Charting a bold course for the St. Mary's College of Maryland's future—and with boundless energy—we launched the public phase of **Taking the LEAD**, a comprehensive campaign, in September 2023. Thanks to the incredible generosity of our alumni and greater College community, **we have reached a major milestone**—we have surpassed the \$20 million mark a year ahead of schedule!

Taking the LEAD has already had a significant impact:

- jumpstarted new programs in business administration & management, marine science and track & field
- raised over \$7.5 million for scholarships
- provided support for the Honors College Promise of an internship, research or international experience for EVERY student
- enhanced the performing arts program

The journey does not end here. We aim to soar even higher. Your partnership and investment translate into value for today's and tomorrow's students and foster mutually beneficial opportunities across Southern Maryland and beyond. St. Mary's College is a worthy investment.

**TAKING
THE LEAD:**



SMCM.EDU/
TAKING-THE-LEAD

Please scan the QR code or visit
<https://go.smcm.edu/taking-the-lead/>
to learn more about the campaign and
how you can make a difference.

How HIGH Can We Fly by June 30, 2025?

ST MARY'S
COLLEGE of MARYLAND

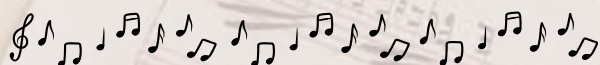




LOCAL TALENT · UNIVERSAL APPEAL

SOUTHERN MARYLAND'S ONLY COMMUNITY ORCHESTRA!

For season information, how to donate, and all the latest news, visit linktr.ee/cosmicsymphony →



We are in need of strings!

Want to join?

Visit cosmicsymphony.org/new-members/



Check Out Past Performances on YouTube!



@COSMIC.Symphony ←



**FREE
CONCERTS
CLOSE TO
HOME!**

Follow COSMIC Symphony on Social Media!



@cosmic.symphony



@cosmic.symphony

JOIN US FOR OUR UPCOMING CONCERTS!

Radiant Rhapsodies

Directed by Will Esterling

Featuring Baron Fenwick

Performing Gershwin's *Rhapsody in Blue*,
Queen's *Bohemian Rhapsody*,
and much more!

Saturday Oct. 11, 2024 @ 3:00 PM
Chesapeake Church
Huntingtown, MD

Sunday Oct. 12, 2024 @ 3:00 PM
Nancy R. & Norton T. Dodge PAC
St. Mary's College of Maryland

**FREE
CONCERTS;
DONATIONS
ACCEPTED!**

The More, The Merrier

Directed by Will Esterling

Hosted by David W. Cook

Saturday Dec. 07, 2024 @ 3:00 PM
Chesapeake Church
Huntingtown, MD

Sunday Dec. 08, 2024 @ 3:00 PM
Nancy R. & Norton T. Dodge PAC
St. Mary's College of Maryland



Joey A. Miller
Foundation



OPEN THE DOOR TO NEW POSSIBILITIES

Federally insured by NCUA.

- ✓ Auto Loans
- ✓ Mortgage Loans
- ✓ Home Equity Loans
- ✓ Digital Banking
- ✓ Mobile Deposit
- ✓ Checking & Savings
- ✓ Credit & Debit Cards
- ✓ Business Banking
- ✓ Educational Seminars
- ✓ Personal Loans



CEDAR POINT
FEDERAL CREDIT UNION®

www.cpfcu.com | 301-863-7071