

Welcome

Capital Design Advisory

December 5, 2012

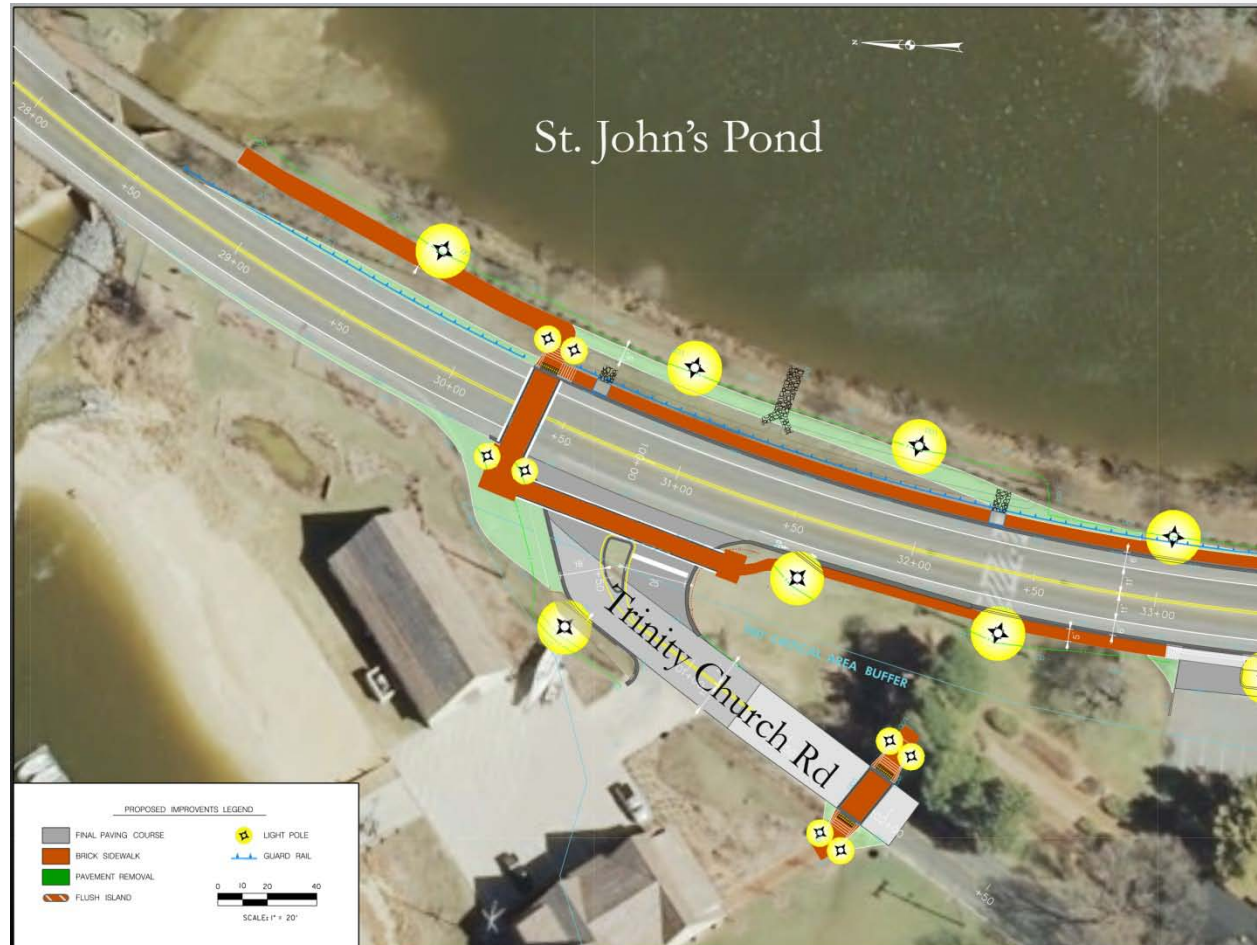
MD. Route 5

Traffic Calming & Safety

Improvements

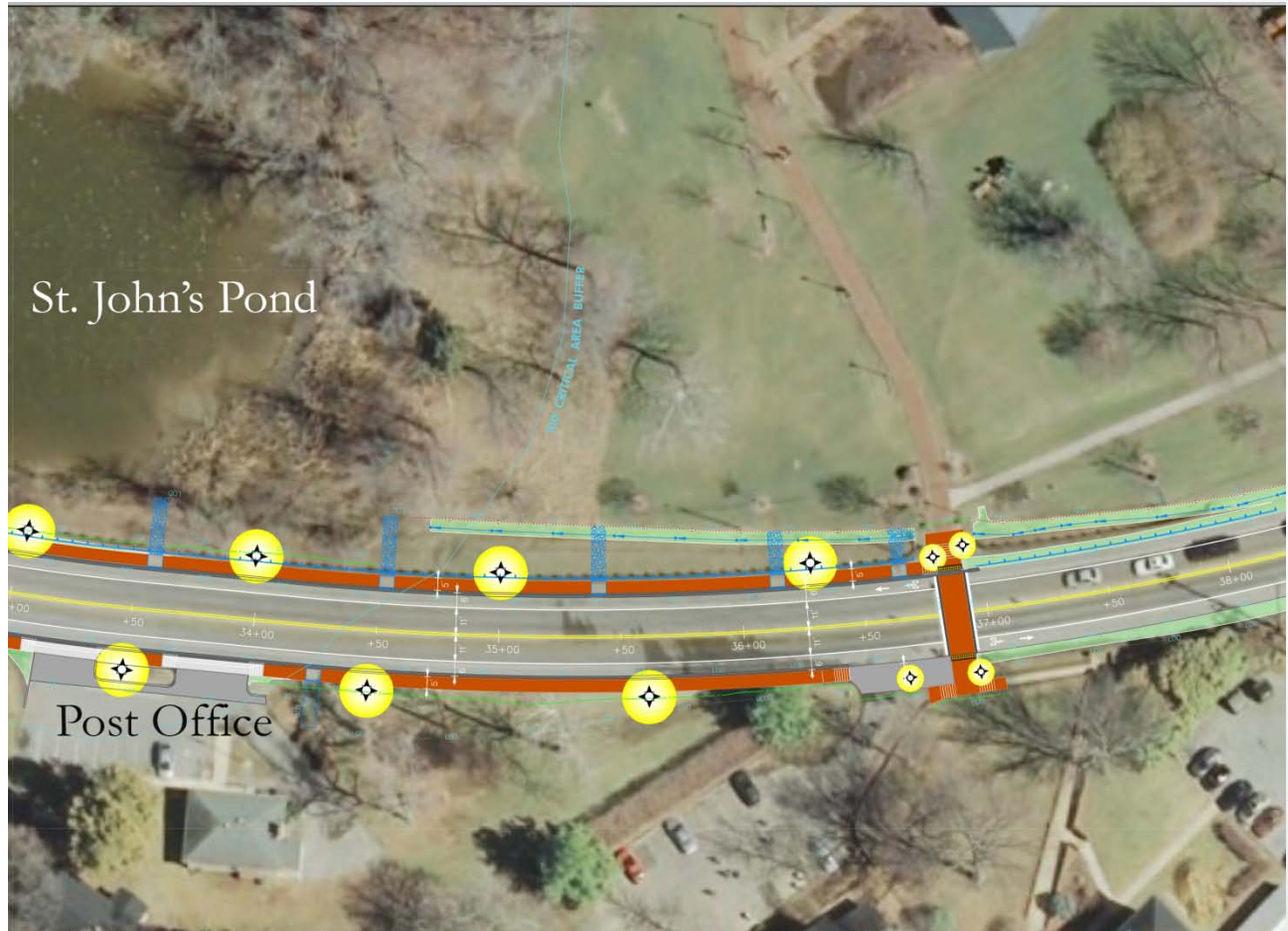
North End of Project

- St John's bridge 28'
- 34' wide pavement
- 11' travel lane
- 5' bike lane
- 1' gutter pan
- 1/3 acre impervious surfacing removed
- Rain garden
- Brick sidewalks
- Brick-look concrete crosswalks
- 18' campus light poles
- Trinity Church Rd intersection re-aligned



Center Section of Project

- Post Office driveway re-graded
- Concrete culvert replaced with grass swale



South End of Project

- Pavement narrowing transitions 100' north of Campus Center driveway
- Bike lanes terminate at State House Rd.

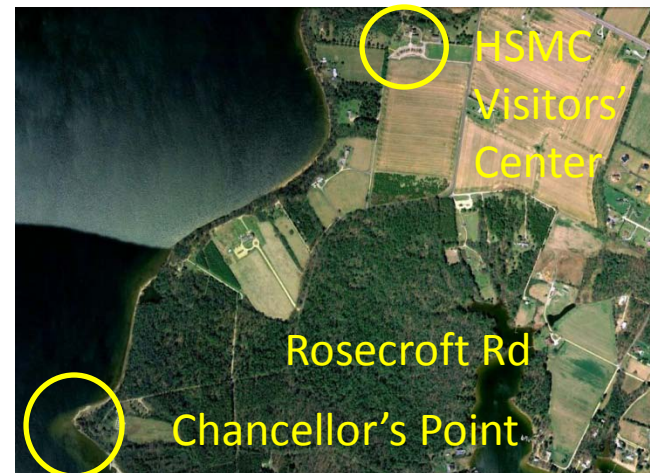


Anne Arundel Hall

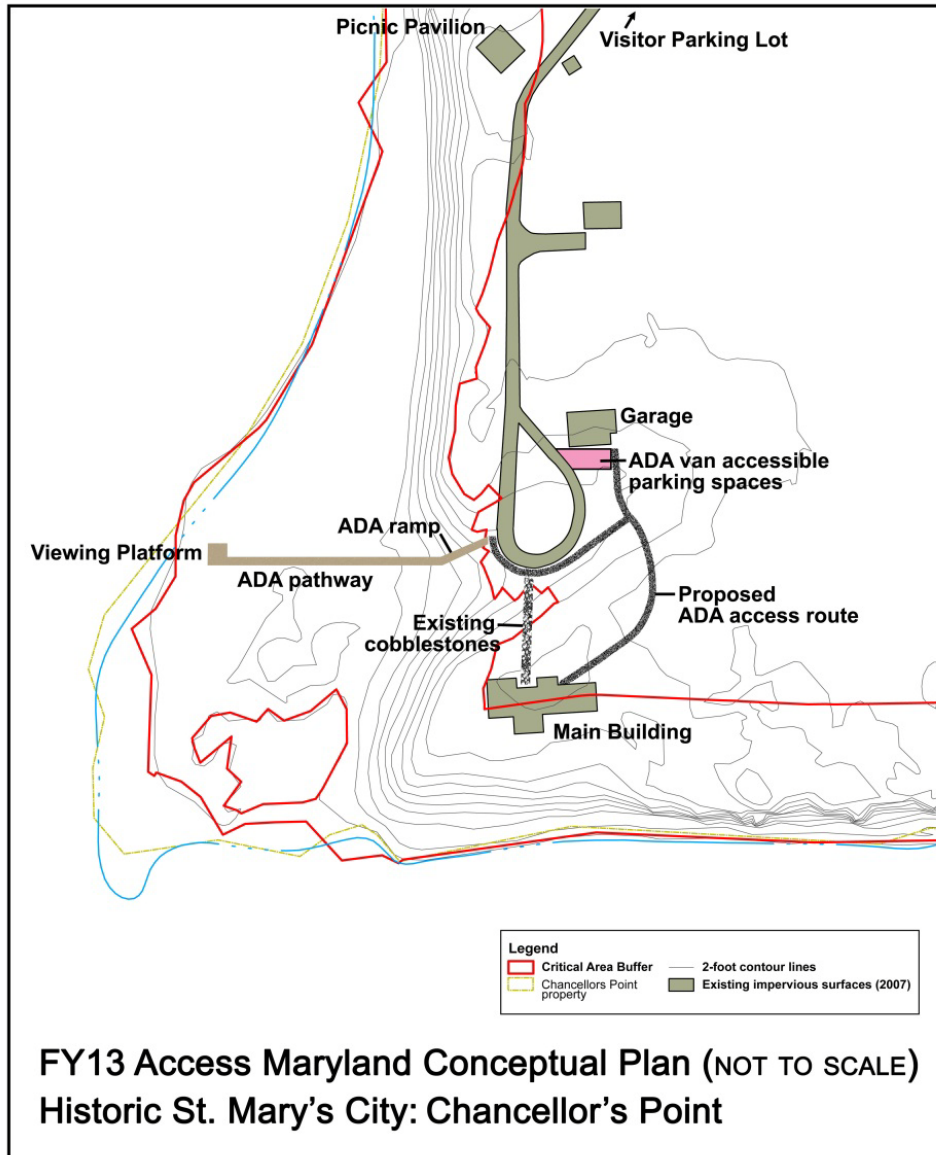


Chancellor's Point at Historic St. Mary's City

- 66 acres on the St. Mary's River
- Nature Center destroyed due to vandalism
- Rehabilitation underway
 - *Repair Nature Center*
 - *Road Reconstruction*
 - *New ADA paths to Nature Center*
 - *New ADA access path to shoreline and beach*



ADA Accessibility Project



FY13 Access Maryland Conceptual Plan (NOT TO SCALE)
Historic St. Mary's City: Chancellors Point

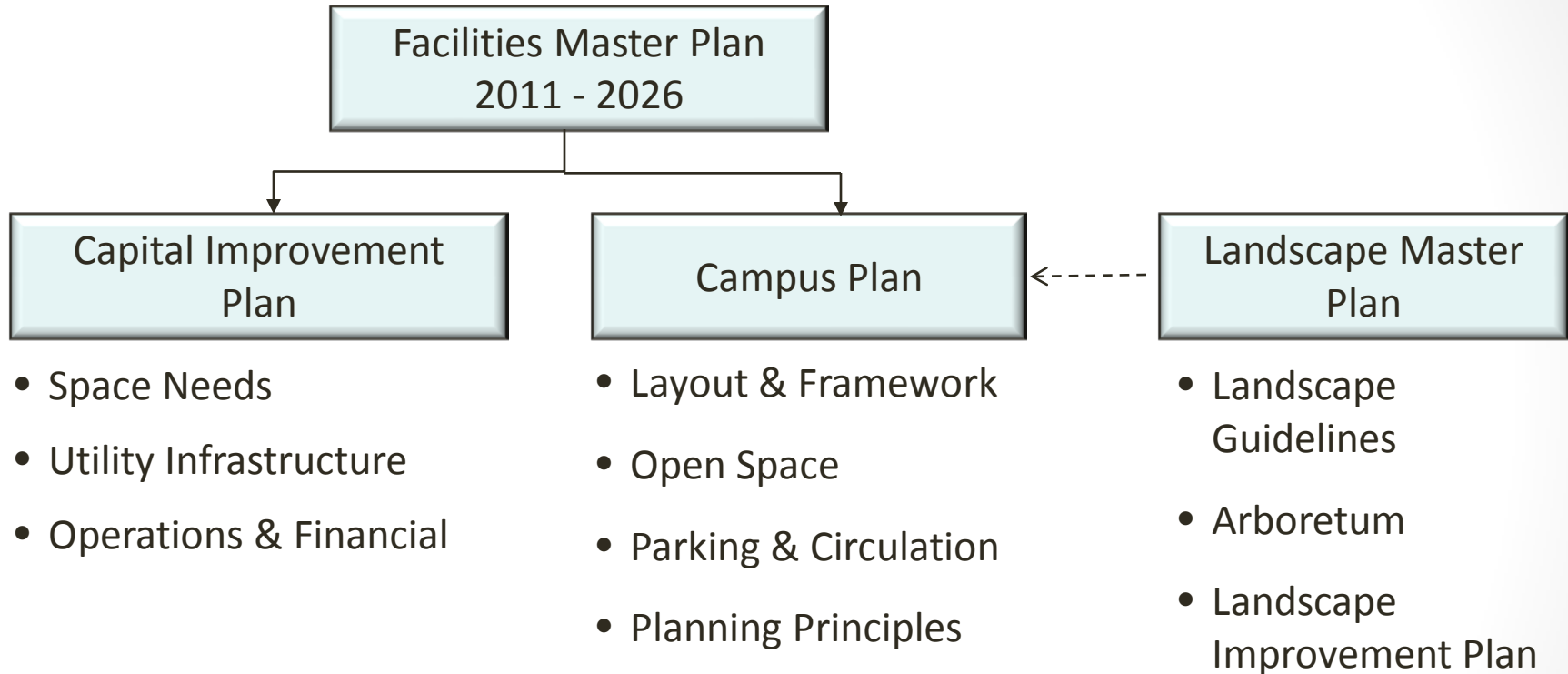
Planned Usage for Chancellor's Point

- College and Public Environmental Programs
 - *Leave No Trace classes*
 - *Nature writing, Aquaculture, Painting classes*
 - *Field schools*
 - *Tree Nursery with MD Conservation*
- Camping
- Retreats and social functions
- Exhibitions in Nature Center

St. Mary's College of Maryland Facilities Master Plan, 2011-2026

Capital Design Advisory Committee
December 5th, 2012

Master Plan Components



Planning Overview

- Phase I: Needs Assessment (spring – fall 2012)
- Phase II: Alternatives (winter - spring 2013)
 - Building Concepts
 - Land Use and Building Sites
- Phase II: Final Plan (spring 2013)



Campus Needs Assessment

- No Enrollment Growth Projected

- Key Academic Space Needs
 - ❑ Instructional Labs and Studio Spaces (Arts and Sciences)
 - ❑ Reading, Study Space, and Campus Life
 - ❑ Auditorium

- Facility Condition and Functioning
 - ❑ Older Buildings
 - ❑ Residence Halls

- Landscape
 - ❑ Circulation- Safety & Congestion
 - ❑ Environmental Stewardship



Campus Needs Assessment

- Key Principles Remain Unchanged
 - Consistent Architectural Language
 - Protection of Historic and Environmental Resources
 - Residential, Walking Campus
- Gathering Feedback

<http://www.smcm.edu/facilities/PhaseI Master Planning Reports.html>



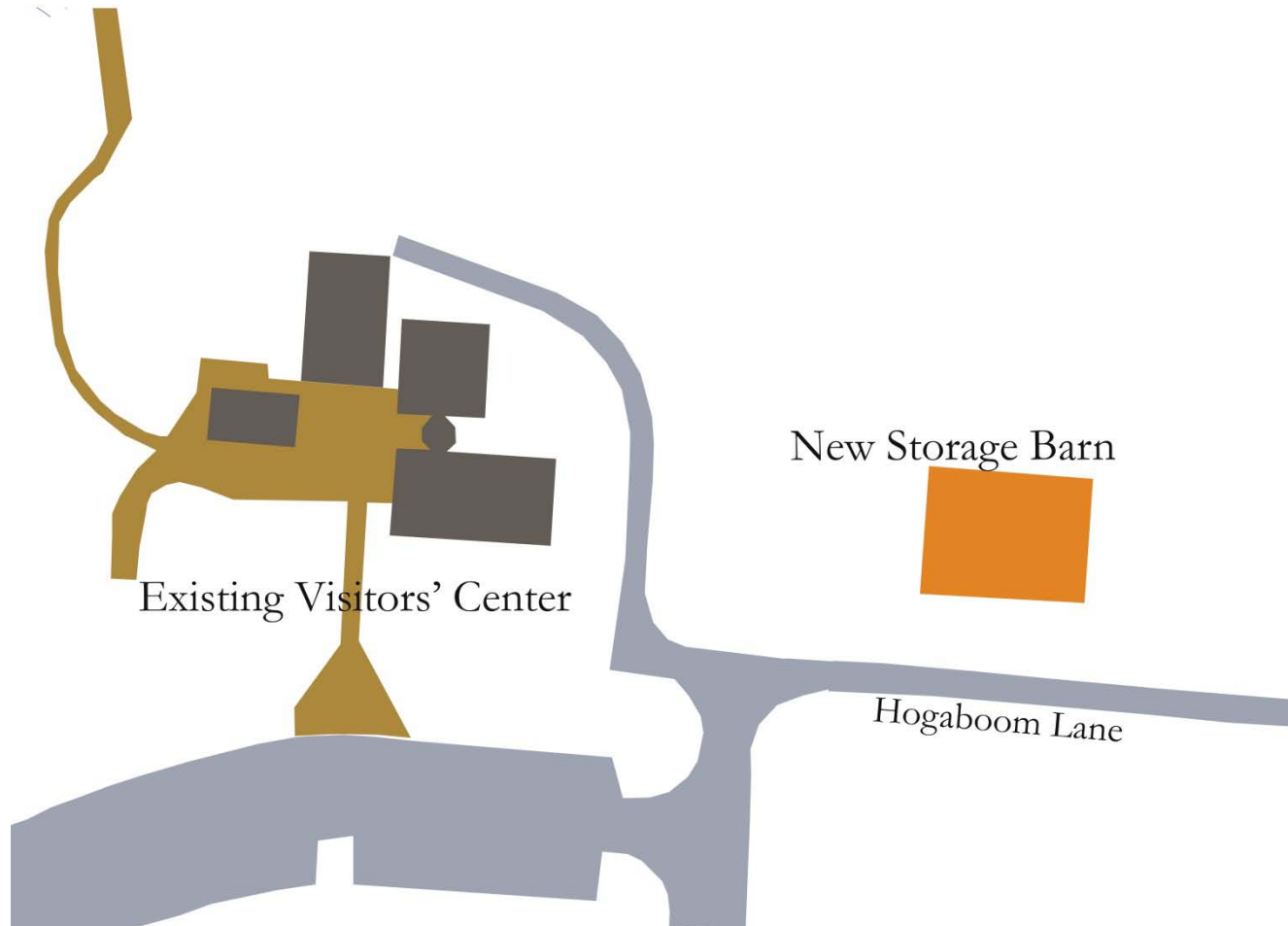
New Storage Barn

Historic St. Mary's City

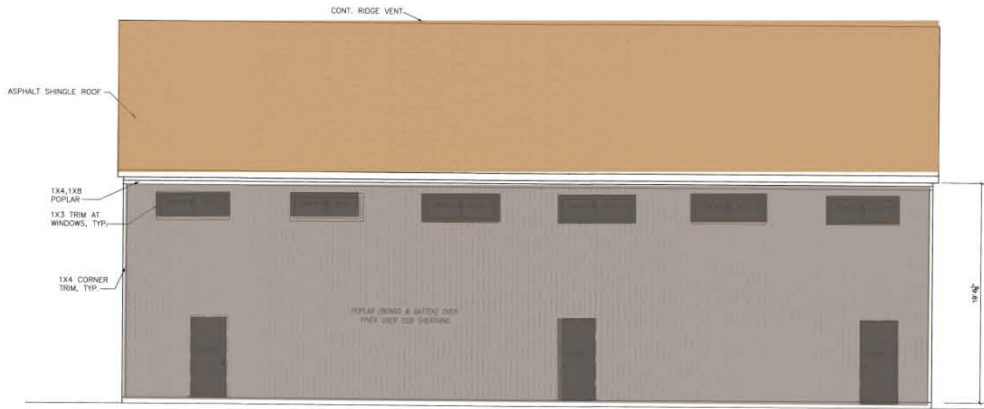
The old storage barn burned down in December 2007



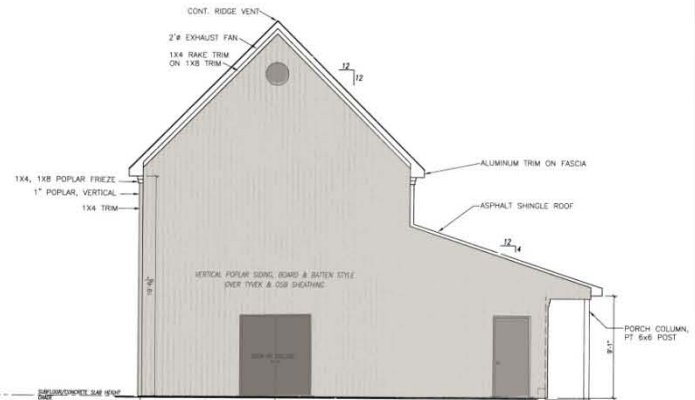
New Storage Barn Site Layout



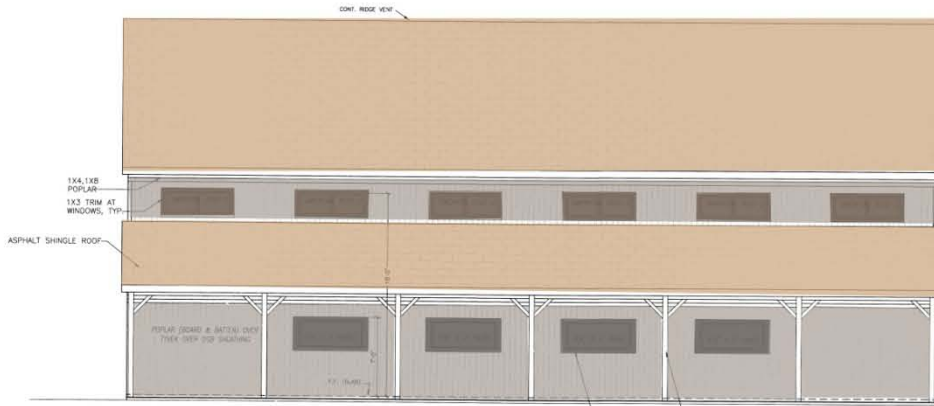
New Storage Barn



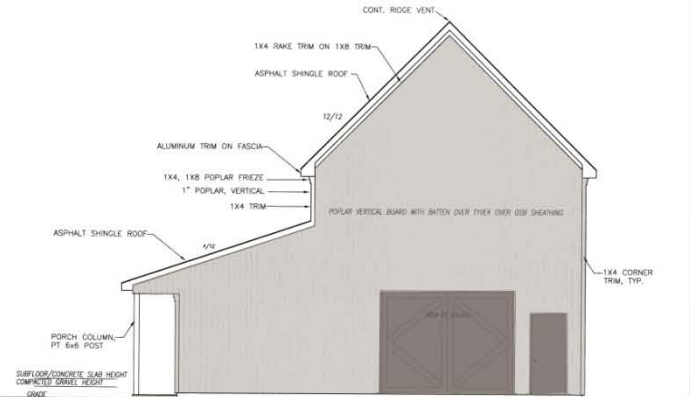
REAR (NORTH) ELEVATION
SCALE: 3/16"=1'-0"



LEFT (WEST) ELEVATION
SCALE: 3/16"=1'-0"



FRONT (SOUTH) ELEVATION
SCALE: 3/16"=1'-0"



RIGHT (EAST) ELEVATION
SCALE: 3/16"=1'-0"

New Storage Barn Facts

- 1,728 square feet
- Oak timber frame structure
- Concrete slab on grade floor
- Exterior poplar board siding with vertical battens
- Architectural cedar-look fiberglass shingle roof
- Interior bathroom facilities
- Infrastructure for future development of the building