

IT'S OPEN! ANNE ARUNDEL HALL



Classes began August 29, 2016 in the newest building on campus. Anne Arundel Hall contains six classrooms, two seminar rooms and specialized labs for museum



studies and anthropology as well as faculty offices and student project spaces. The buildings are also home to the archaeology efforts of Historic St. Mary's City which include offices, laboratories and artifact collection and archives. The finishing touches on the buildings and landscaping are to be completed by the facility's dedication on October 15, 2016.

.....

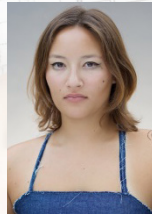
LOOKING GOOD: NEW ARENA FLOOR AT THE ARC



The arena floor located in the Michael P. O'Brien Athletic Recreational Center has been updated with a new look. The Physical Plant, Athletics Department and the Office of Communications worked together on the redesign to ensure consistency with the College's new brand and marketing enhancements in support of both the basketball and volleyball programs.

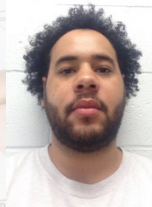
WELCOMING NEW EMPLOYEES

Please join the Office of Planning and Facilities in welcoming our new employees to campus.



Isabella "Bella" Lee, sustainability fellow, is a recent graduate of SMCM (spring 2016). Bella can be reached at Calvert Hall B13, ext. 2093 or email her at ilee@smcm.edu.

Aaron Miles, manager of Housekeeping Services, comes to us from St. Mary's County Public Schools. Aaron can be reached at ext. 3241 or email him at ahmiles@smcm.edu.



Thomas "TJ" Briscoe, general support clerk for the

mail room, started as a caretaker in the Housekeeping Department, September 2015. TJ can be reached at the Physical Plant, ext. 3102 or email him at tabriscoe@smcm.edu.

Robert "Trey" Clements, in the Grounds Department, started as a seasonal employee in May 2015. Trey can be reached at the Physical Plant, ext. 3235.



BECOMING GREENER



The Office of Sustainability played a significant role in welcoming students to campus during New Student Orientation. The sustainability fellow and interns educated new students about waste streams and participated in service day activities. Boxes were collected from arriving students for reuse.

IMPROVING ENERGY EFFICIENCY

The Physical Plant is completing installation of 20 heat pumps at the Crescent Townhouses. This will bring the total number of high efficiency heat pumps installed since 2014 to 81. The new heat pumps reduce both the College's utility bills and carbon footprint. The project's final phase was planned by both the Physical Plant and the Sustainability Office and made possible by funding through GSMRF (Green St. Mary's Revolving Fund).

LIGHTING THE WAY

The Physical Plant has replaced lamps in 130 exterior light poles and other fixtures across campus with LED technology. The replacement lamps are high efficiency and will further reduce the College's utility bills, carbon footprint and maintenance costs while enhancing safety on campus.

BREAKING GROUND: THE JAMIE L. ROBERTS STADIUM



The Roberts Family along with Dr. Tuajuanda Jordan broke ground for the Jamie L. Roberts Stadium on Sept. 17, 2016.

On September 17, 2016, the first shovel of dirt was turned for the Jamie L. Roberts Stadium, thanks in part to a generous gift from the Jamie L. Roberts Family that helped the College meet its \$2.5 million Capital Campaign Challenge. The College is now in the process of selecting a contractor to design and build the two-field complex on the south side of Mattapanay Road. Construction is to start next year. The stadium will feature seating for 800 spectators at each of the two lighted fields, one grass and one turf.



Artist's rendering of the Jamie L. Roberts Stadium.

RESIDENCE HALL RENEWAL

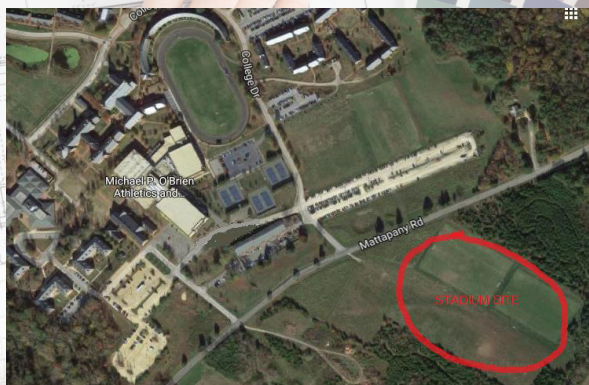
A new, energy efficient HVAC system installed in Queen Anne Hall completes the residence hall renewal project.

OTHER PLANNED PROJECTS

Learn about other projects at "Design & Construction" on the web: www.smcm.edu/facilities

STARTING UP

September brought the first meeting of the College's Sustainability Council, consisting of representatives of the students, faculty, staff and administration. This new body will chart the course of the College's sustainability efforts from new projects to save energy and reduce carbon emissions to the incorporation into curriculum across all disciplines of environmental awareness and sustainability issues.



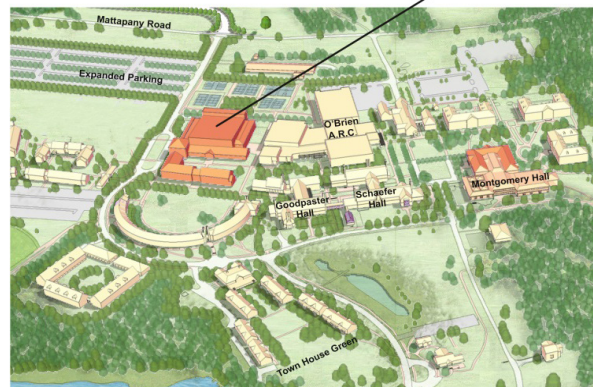
Aerial site map of the Jamie L. Roberts Stadium.

FREESTORE

During the 2015-2016 school year, the Office of Sustainability established the Free Store, a free thrift store on campus that encourages reuse and recycling of home goods and clothing. Students can drop off unwanted items and search for something new. The Free Store also provides students business wear to prepare for interviews, internships and jobs. Staffed by student volunteers, work/study students and employees from the Office of Sustainability, the Free Store is located in the basement of Dorchester Hall, next to the laundry room. Store hours are Mondays, Wednesdays, and Thursdays, 4-6 PM; Tuesdays, 1-3 PM; closed Fridays.

LOOKING AHEAD: NEW ACADEMIC BUILDING & AUDITORIUM

New Academic Building and Auditorium



Upon the completion of the Jamie L. Roberts Stadium, ground will be broken on the existing varsity field for a 700-seat auditorium consisting of classrooms, offices, and rehearsal space for the Music Department and Educational Studies. This project will also feature student "learning commons," renovation of a portion of the old field into a new lively Crescent Greens, expansion of parking lot T, and an improved entry to the College from Mattapanay Road. Planning and Facilities will be searching for an architect and a construction manager for the project starting later this fall. Construction anticipated to start in 2020.