



The
MULBERRY
TREE

SPRING 2013

**ORIGINALITY,
RESEARCH,
INSPIRATION**

**EXPERIENCE
NECESSARY**

*St. Mary's Interns
Get Real-World Experience*

[PAGE 6]

**CHANGE THE WORLD:
TEACH!**

*St. Mary's Master of Arts
in Teaching Program*

[PAGE 10]

CSD AT 10

*The Center for the Study
of Democracy Passes the
Decade Mark*

[PAGE 14]

The MULBERRY TREE

SPRING 2013, VOL. XXXIV, NO. 2

www.smcm.edu/mulberrytree

Editor

Lee Capristo

Alumni Editor

Kathy Cummings

Design

Skelton Design

Photographer

Bill Wood

Editorial Board

Karen Anderson, Mary Wheatman
Body '79, Kathy Cummings,
Elizabeth Graves '95, Nairem Moran '99,
Karen Raley '94, Keisha Reynolds '96,
Maureen Silva, Joe Urgo

Publisher

Office of Advancement
St. Mary's College of Maryland
18952 East Fisher Road
St. Mary's City, Maryland 20686

The Mulberry Tree is published by St. Mary's College of Maryland, Maryland's public honors college for the liberal arts and sciences. It is produced for alumni, faculty, staff, trustees, the local community, and friends of the College.

The magazine is named for the famous mulberry tree under which the Calvert colonists signed a treaty of friendship with the Yaocomico people and on the trunk of which public notices were posted in the mid-1600s. The tree endured long into the 19th century and was once a popular meeting spot for St. Mary's students. The illustration of the mulberry tree on the cover was drawn in 1972 by Earl Hofmann, artist-in-residence when St. Mary's College President Renwick Jackson launched the magazine.

Copyright 2012

The opinions expressed in *The Mulberry Tree* are those of the individual authors and not necessarily those of the College. The editor reserves the right to select and edit all material.

Manuscripts and letters to the editor are encouraged and may be addressed to Editor, *The Mulberry Tree*, St. Mary's College of Maryland, 18952 E. Fisher Rd., St. Mary's City, MD 20686.

Photographs and illustrations may not be reproduced without the express written consent of St. Mary's College of Maryland.



Mixed Sources
Product group from well-managed
forests, controlled sources and
recycled wood or fiber
www.fsc.org Cert no. SW-COC-002210
© 1996 Forest Stewardship Council



CONTENTS

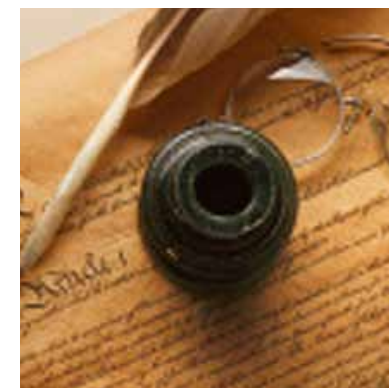
SPRING 2013



[PAGE 6]



[PAGE 10]



[PAGE 14]

COVER: Nina Rabin '13

OPPOSITE:

Getting the shot: Nina Rabin poses in front of the state house in Annapolis, Maryland on February 21, 2013. Photographer Bill Wood hits the bricks in order to get the right angle. Weather that morning: 26 degrees and breezy.
Photo by Ashley (Taylor) Stopera

SMCM ALUMNI COUNCIL JULY 2012 – JUNE 2013

Executive Board

Danielle Troyan '92, *President*

Vacant, *Vice President*

Angie Harvey '83, *Secretary*

Alice Arcieri Bonner '03, *Parliamentarian*

Jim Wood '61, *Treasurer*

Paul Schultheis '98, *Ex-Officio*

Elected Voting Members

Mary Wheatman Body '79

Emily Brown '10

Debbie Craten Dawson '94

Donna Denny '81

Barbara Dinsnbacher '56

Laurel Tringali Eierman '84

Mark Fedders '74

Missy Beck Lemke '92

S. Jae Lim '09

Ryan McQuighan '05

Laurie Menser '01

Caitlin Moore '08

R. Andrew Mosley '00

Brian Murphy '75

Jeremy Pevner '09

Todd Purring '86

Student Member

Alex Brylske '13

Chapter Presidents

Annapolis:

Erin O'Connell '91

Baltimore:

Dallas Hayden '06

Jayson Williams '03

Black Alumni:

Brenda Robinson '85

D.C. Metro:

Matt Schafle '10

Southern Maryland:

Cathy Hernandez Ray '77

Western Maryland:

Kristi Jacobs Woods '97

Staff

Beth Byrd

Associate Director of Alumni Relations

David Sushinsky '02

Director of Alumni Relations

FEATURES

PAGE 4

Experience Necessary

Who Says English Majors Don't Get Their Hands Dirty? Students connect what feeds their bodies and spirits in Jennifer Cognard-Black's popular class.

PAGE 8

Change the World: Teach!

An interdisciplinary SMP sails into uncharted territory. Rebecca Prasher '12 navigates 17th-century naval architecture into 21st-century computer modeling.

PAGE 12

CSD at 10

St. Mary's Emerging Scholars Program is a credit to the efforts of teachers who care about their students' success.

DEPARTMENTS

2 President's Letter

3 College News

18 Alumni Connection

26 Philanthropy

28 From the Archives

HOW THE LIBERAL ARTS ANSWERS THE NATIONAL MISSION

AT ANY GIVEN TIME, OF THE hundreds of thousands of students enrolled in some kind of college or university, only 2% are at a residential liberal arts college, where they live and learn among new friends and acquaintances. The model is the gold standard in higher education. We strive universally for engaged students, small classes, research-based or creatively infused curricula – these are both the inventions and defining characteristics of the liberal arts college. Large universities seek to approximate the model through the establishment of honors colleges and curricula, first-year seminar programs, residential colleges, and the like. Corporations do the same in referring to their sites as campuses, and by providing amenities to make employees feel in residence. We know the statistics that show how students who attend such institutional structures assume positions of leadership and influence disproportionate to their numbers.

Today, right at the moment when college decisions are being made by the probable leaders of tomorrow, a vocal segment of our society attempts to lead young people away from academic and intellectual rigor toward something more practical, and more immediately profitable. Yes, practical matters are pressing, and they need to get done, and the work they entail is honorable, necessary, and contributes to our collective purpose. At the same time, we need to staff our collective brain trust, to encourage young people with both the capacity and the will to delay immediate material reward so that we may direct them through an arduous and extended period of intellectual training and preparation. We do this because the nation needs the most capable minds in its think tanks and policy bureaus, its research laboratories, its judgeships. It needs to cultivate its creators and inventors if we are to progress as a civilization.



The nation needs the most capable minds in its think tanks and policy bureaus, its research laboratories, its judgeships. It needs to cultivate its creators and inventors if we are to progress as a civilization.

The way that liberal arts colleges accomplish this national mission is by suspending practical application for a period of time, and by engaging young minds with the history of human thought, research and creative endeavor. Instead of learning how to sell something, the student studies psychoanalytic theory;

instead of learning how to write office memoranda, the student studies the complexities of language in the world's most challenging literary texts; instead of learning the basic counterarguments in foreign policy debates, the student studies political philosophy, the long human engagement with thinking about thinking, about how arguments are structured, sustained, and overturned – not to mention the extensive and varied record of worldwide military and diplomatic history.

Nonetheless, we hear a cacophony of voices questioning with emphatic redundancy the utility of intellectual phenomena that have no stated utility, by definition. But these arguments are irresponsible and run contrary to the national interest. Why is it that some would want to discourage our highest academic achievers from devoting more time to intellectual endeavor? Why would anyone, particularly educators, want to discourage intellectual advancement or to prevent it from emerging?

It is in the national interest to cultivate and encourage those students with the will and the capacity for abstract intellectual work, to support their willingness to step outside the desperate profit-race for a time and explore the unimpeded and undirected path of their best thinking. Such passions should be nurtured, not suppressed, as if – or rather, because – our survival as a civilization depends on it.

Joseph Urgo

JOSEPH URGO
President, St. Mary's College of Maryland

This letter was taken in part from "The National Fount: The Liberal Arts as a Renewable Resource" (ADFL Summer Seminar West in Eugene, Oregon, June 7-10, 2012) and from Op Ed, 3/03/13, Baltimore Sun.

COLLEGE NEWS



Gabriel Young

Milestones for Students

Gabriel Young '13 is a U.S. State Department Critical Language Scholarship Award winner. He will study Arabic in Egypt or Jordan with the scholarship. **Emily Burdeshaw '13** has the distinction of being NAVAIR's first Pathways Program employee; part of President Obama's federal hiring reform initiative. **Rebecca Thayer '15** is studying in China this spring as a Gilman scholar.

VOLUNTEERISM AS A GOAL FOR THE LIBERAL ARTS

St Mary's ranks 8th for Peace Corps list of top volunteer producing schools. For the third time, the College has been named to the President's Higher Education Community Service Honor Roll, the highest federal recognition a college can receive for its efforts in volunteering, service-learning, and civic engagement.



New Economic Publications

Professor **Donald Stabile** and Associate Professor **Andrew Kozak** coauthored *Markets, Planning, and Moral Economy: Business Cycles in the Progressive Era and New Deal* (Edward Elgar Pub, 2013). The book explores multiple historical perspectives to analyze conflicting viewpoints that emerge as a result of the Great Depression.

Asif Dowla, professor of economics and Landers Endowed Chair in Liberal Arts, published the article "How to Deal with a Default Tsunami in the Micro Finance Industry: Lessons from Grameen Bank," analyzing how the Nobel Peace Prize-winning microfinance organization and community development and community bank, Grameen Bank, Bangladesh, dealt with the existential threat of a large scale default by its borrowers.

Best Value

Kiplingers Personal Finance and **The Princeton Review** both name St. Mary's College of Maryland as one of the nation's top "Best Value Public College". The Princeton Review also names St. Mary's College of Maryland as a "Best Northeastern College."



Aid for Oysters

Professor of Biology **Bob Paul** leads the College's efforts in a collaboration with Maryland Industrial Partnerships (MIPS), Maryland Department of Natural Resources, and Shore Thing Shellfish, LLC, for alternative technology to traditional oyster setting methods. Read more on page 19.



PHOTO: ROBERT LIPSCOMB

Seahawks Play in Elite 8 for Second Time

Head coach **Chris Harney '97** led the men's basketball team to a second-ever trip to the Elite 8 competition in NCAA Div III playoffs, where they lost to Mary Hardin-Baylor, 69-66. The team had record-setting season with 27 wins, the most by any men's basketball team in Seahawk history.

Scholarship Benefits Students from Baltimore

St. Mary's successfully completed a 4:1 challenge grant by the France-Merrick Foundation which increases by \$500,000 endowed scholarship funds for Baltimore City students.

Faculty quote here? Callout?

Faculty Authorship with Alumni

Associate Professor of Psychology, **Aileen Bailey**, and Jean Milstein '01, Jesse Burke '12, Jonathan Kallevang '11, and Kevin Turek '10 published the article "Olazapine treatment of adolescent rats alters adult reward behavior and nucleus accumbens function" (*International Journal of Neuropsychopharmacology*). Bailey contributed with Angly Kallarackal '06 to write "The effect of apamin, a small conductance calcium activated potassium (SK) channel blocker, on a mouse model of neurofibromatosis 1" (*Behavioral Brain Research*). **Roger Stanton**, assistant professor of psychology, and alumnus Steven Morris '11 coauthored "Human Learning of Elemental Category Structures: Revising the Classic Result of Shepard, Hovland and Jenkins (1961)" (*The Journal of Experimental Psychology: Learning, Memory and Cognition*). Katy Arnett '00, associate professor of educational studies and Fulbright scholar, published the book, *Languages for All: How to Support and Challenge Students in a Second Language Classroom* (Pearson Education Canada). She began research for this project with her St. Mary's Project.

SEAHAWKS IN SAN FRANCISCO

Two Seahawk sailors, skipper Jacob LaDow '15, and junior skipper John Wallace '14, will compete in September's Red Bull Youth America's Cup in San Francisco, Cal., a first-ever competition for talented youth sailors (ages 19-24).

Botzman Departs for Misericordia Presidency



Left, Thomas J. Botzman, right, Chip Jackson

Vice President for Business and Finance **Tom Botzman** will depart his position at St. Mary's to become the 13th president of Misericordia University, effective July 1, 2013. He joined St. Mary's in 2004, and in addition to leading business and finance, he also served as a professor of economics. Before St. Mary's, Botzman spent 15 years on the faculty at Mount Union College in Ohio. **Charles "Chip" Jackson** has been named to replace Botzman. A 26-year employee of the College, Jackson currently serves as associate vice president for planning and facilities. In the role of vice president for business and finance, Jackson will oversee business affairs, facilities planning and operations, human resources, information technology, and government relations.

Faculty Accomplishments

David Kung, professor of mathematics, offers a course, "How Music and Mathematics Relate" in the Teaching Company's Great Courses DVD program.

David Froom, professor of music, had his composition "Turn of Events" performed at Vanderbilt University in Nashville, Tenn. The composition distinguishes the saxophone as a solo classical instrument.

Professor of English **Jennifer Cognard-Black** is a 2013 Maryland State Arts Council Individual Artist Award winner in fiction.

Sybol Anderson, associate professor of philosophy, received a Maryland College Access Challenge Grant worth \$59,965 to support the DeSousa Brent Program.

Works by Professor of Art **Sue Johnson** are on exhibition in "Concrete Abstract" at the Heiner Contemporary in Washington, D.C. during March-April.

Paintings by Associate Professor of Art **Carrie Patterson** were featured in the WPA's "Select 2013" exhibition in Washington, D.C. during February-March. **Patterson** was also featured in The Washington Post article "Leonardtown Wants to be Known as a Center for Arts," highlighting her Yellow Door Art Studios.

Jeffrey Silberschlag, professor of music, conducted the London Philharmonic Orchestra in "Spirit of American-Urban Turbulence" on the CD recording of "Sound Portraits, Music by Vivian Adelberg Rudow," released in January.



Carrie Patterson, Mail Pouch, 2012
Oil, acrylic, and enamel on wood and canvas,
13" x 13" x 2"

Faculty quote here? Callout?



Jeffrey Silberschlag

The artwork of Assistant Professor of Art and 2012 Hamiltonian Fellow **William "Billy" Friebele** was featured in the Corcoran College of Art and Design's exhibition, "This is Not a Museum: Portable and Lurking," and had a debut solo exhibition, "Current Recorder," at the Hamiltonian Gallery in Washington, DC. He is a 2013 Maryland State Arts Council Individual Artist Award winner for digital arts.

Randolph K. Larsen III, associate professor of chemistry, received a Leidy Foundation award to support student travel to the annual American Chemistry Society conference and a \$10,000 award from the Pittsburgh Conference Memorial National College for the purchase of a Raman spectrometer with fiber optic scope.

Associate Professor of Chemistry **Pamela Mertz** and Assistant Professor of Chemistry **Craig Streu** received a grant from the Royal Society of Chemistry Research Fund for a collaborative project called "Application of transition metal catalysts as chemical probes of biological systems: A novel prodrug approach for temporal manipulation of protein kinase A with a commercially available ruthenium catalyst."

Assistant Professors of Mathematics **Emek Kose** and **Casey Douglas** were awarded by the Center for Undergraduate Research in Mathematics with a grant for their project, "Maps and Mirrors," to fund three student research assistants for one year.

Walter Hill, professor of political science, had his article, "Should More Polls Be Interpreted as Too Close to Call?" published in the April 2013 issue of *PS: Political Science & Politics*.



EXPERIENCE NECESSARY:

LEARNING THE POLITICAL PROCESS VIA INTERNSHIP

BY ANNALISE KENNEY '15, BIOLOGY AND RELIGIOUS STUDIES MAJOR

ST. MARY'S COLLEGE OF MARYLAND political science and public policy students take the phrase "learning by doing" very seriously. The proximity of important political hubs like Washington, D.C. and Annapolis allows students to apply theories learned in class to a variety of real-world internships. The Washington Program and the Schaefer Internship, two internship programs created and overseen by St. Mary's College faculty, allow students to replace St. Mary's sweat-shirts with dress clothes, book bags with briefcases, and classrooms with Congress.

THE WASHINGTON PROGRAM

Political science professors **Sahar Shafqat** and **Matt Fehrs** designed and launched the Washington Program in the summer of 2012 when they realized that many St. Mary's political science alumni live and work in the nation's capital. "Classes are great theoretically," says Shafqat, "but the actual experience of working in Washington, D.C. is key to a successful career." The Washington Program is a summer-long process. In May, students take an intensive week-long class which gives students an "intellectually rigorous theoretical foundation" for their internship. Each student is matched with an alumni mentor, ideally based on

shared interests. Because the mentor-mentee relationships are flexible and unconstrained by specific guidelines, mentors are able to connect with their mentee on a unique level: "DC can be a high-stress place, compared to the relaxed St. Mary's environment, and it helps to have someone you can talk with who is familiar with both environments," says **Kerry Crawford '07**.

Alumni mentors were happy to participate in the program directors' vision of a "support network for summer interns," says Crawford. The idea resonated with other mentors who struggled not only to find quality, for-credit internships, but also felt lost in the fiercely competitive Washington, D.C. political climate when

they were student interns. Student participant **Andrew Gear '14** says his mentor provided valuable insight and advice for his internship, education, and future career. Ultimately, his mentor “represented a friendly face throughout the experience.”

What crucial knowledge did mentors impart to their assigned students? “I wanted my mentee to keep her mind open, ask the right questions, and get the most out of her internship by meeting and connecting with people,” says mentor **Paul Shinkman '06**, who adds that he worked to connect his mentee with people who would help her achieve her future goals. “I remember how helpful some of my mentors were in landing a job after graduating from college,” says mentor **Isaac Salazar '02**. “I wanted to pay it forward to the next generation of students.”

Mentor **Jackie Whisman '05** adds that the Washington Program is a great way for students to “develop and maintain relationships and experiences that will help when they graduate.” All parties were thrilled with the program’s trial run. “It was a blast,” says co-director Shafqat. “The students were amazing and the mentors were very generous with their time. Experience is so valuable for launching a successful career in public policy.”

The assigned internships themselves were diverse: **Emma Kaufman '15** was the Public Policy Intern at RAINN (Rape, Abuse, and Incest National Network). After spending the summer working with human rights issues that affect women, Kaufman says her internship “cemented” what she wants to do in her future career. “Working at RAINN allowed me to study and engage in a topic I am tremendously passionate about,” she says. **Andrew Gear '14** and **Elie Keesler '14** interned under Congresswoman Zoe Lofgren and Congressman C.A. Dutch Ruppersberger in the U.S. House of Representatives, respectively. As congressional interns, Gear and Keesler were responsible for “keeping up with and sorting constituent mail, writing letters, researching briefs, giving tours of the Capitol building, and attending hearings,” explains Keesler.

However, no matter the focus of their internship, students agree that the Washington



“After working on the Hill, I have my foot in the door for so many political and research opportunities in DC. Look out for me one day!” – *Elie Keesler '14*

Program was an invaluable experience. Gear’s internship increased his interest in politics, leading him to pursue political internships for the upcoming summer. “My time on the Hill is something I will always remember,” he reflects. Keesler enjoyed meeting professionals involved with security, armed forces, and intelligence fields in and around DC, a special experience for her as this is her intended career area. “After working on the Hill, I have my foot in the door for so many political and research opportunities in DC,” she says. “Look out for me one day!”

THE SCHAEFER INTERNSHIP

The spring before the Washington Program students set off for D.C., **Emily Burns '13**, the 2012 Schaefer Intern, was making waves in Annapolis. The Schaefer Internship, a prized position held by one St. Mary’s student every spring, allows the intern to act as a government relations staff member for St. Mary’s College at the Annapolis legislature, which meets for 90 days every spring. This carefully selected student travels to Annapolis up to four times a week in order to track potential legislation which may be important to St. Mary’s College. The student then reports back to Tom Botzman, vice president for business and finance, and his staff. “There’s no way I can do my job without the Schaefer intern,” says Botzman.

The St. Mary’s Schaefer Intern holds a unique position among other colleges and uni-



TOP: *Caption to come. Ovides rem imus, sae sint earum repere mentio. Ut que velit que pre omnienis molori rati cor si tet que eos nos dolupidis maximpos squiam voluptam.*
 ABOVE: *Uptatquias sit et facculpa dolorae laborit ea quid ut audis sam faceper epellore excesequi ipienda nonem faccusa.*

versities, all of which send professional government relations staff members to observe the Annapolis legislative process. Giving a student intern this responsibility, Botzman says, creates an effective learning experience that benefits the college. Not only does the student earn an amazing amount of familiarity with the political system by attending three months of legislative hearings and meetings, but with the Schaefer Internship in place, the College does not have to “tear another staff member” from their job to keep track of legislative bills. “The Schaefer Intern is the eyes and ears for St. Mary’s College,” says Botzman.

The Schaefer Intern is expected to research bills which hold significance to St. Mary’s prior to the hearings, attend the legislative hearings themselves, then discuss bills of interest with a gathering of St. Mary’s College staff and trustees. “It’s amazing how many types of bills can impact a small liberal arts college,” says Emily Burns. State funding, new budgets, bills related to the healthcare system, pension, and unemployment, and even bills related to taxes on textbooks could affect the function of the college and are carefully considered and documented by the Schaefer Intern.

The Schaefer Intern also lends a necessary personal dimension to the legislative process: “The legislative leaders always seek out the opinions of our students,” says Trustee Gary Jobson, who is Chair of the Government Relations Committee on the Board of Trustees. “This interaction with the legislature is a very valuable career experience.” The presence of actual students in these legislative hearings can often impact lawmakers’ opinions, says Jobson. “The influence our students have is impressive; they really help us make our case [to the legislature].” The Schaefer Intern also attends legislative liaison meetings with liaisons from other institutions, which are important to gain or show support for various issues.

Thanks to her mother’s political career, Emily Burns had plenty of experience in Annapolis prior to her internship. Burns dedicated her entire schedule to the Schaefer Internship last spring, treating the internship “like a full-time job.” She remembers how interesting it was acting in the same capacity as other schools’



ABOVE: *Caption to come. Ovides rem imus, sae sint earum tet que eos nos dolupidis maximpos squiam voluptam.*
 RIGHT: *Uptatquias sit et facculpa dolorae laborit ea quid ut audis sam faceper epellore ipienda nonem faccusa.*

professional specialized government relations staff. “They had no idea I was an undergrad!” “I was really glad to finally get to know the St. Mary’s administration staff and understand everything that goes on behind the scenes,” she says. “[The administration staff] has great confidence in the Schaefer Intern. It was a wonderful experience to have such an important role and be trusted to perform well. I can’t wait to get out [into the working world] and put my skill set to use.”

Nina Rabin '13, the 2013 Schaefer Intern, also enjoys the internship. “I’m like a spy,” she jokes. “I attend hearings and report back [to Tom Botzman and staff] about the important bills brought forward, which delegates and senators support which bills, and what all this means for St. Mary’s.” Considering well over one thousand bills are presented each 90-day legislative session, keeping track of all these bills is quite a feat. But Rabin embraces her responsibility. She calls the internship a “hidden gem,” saying that she has “learned more than [she] expected, not only about the legislative



system, but also about communication and the differences between idealized and actual political systems.”

In addition to carrying out her duties as the Schaefer Intern this spring, Rabin is working on a St. Mary’s Project in which she will analyze failed states in light of the success of organized state-level governmental systems. She describes her dream job as helping to establish a new political system in a failed state. The Schaefer Internship is definitely a step in the right direction for Rabin. “I love that political science internships allow students to see why and how the political system actually works,” she says. “Sometimes it’s frustrating to watch, but it’s amazing when it all comes together to cause change.” ♦



CHANGE THE WORLD: *Teach!*

BY HANNAH BROWN '13,
ENGLISH MAJOR

St. Mary's is proud of its liberal arts distinction. It is proud to offer its students opportunities to learn in a classroom, and then apply that learning to the real world. The Core Curriculum requires students to push the boundaries of their interests. The international education programs promote cultural exchange and learning outside of the classroom. The Career Development Center helps students find internships and jobs on campus and in the community to facilitate the acquisition of real-world experience. But how does the Master of Arts in Teaching (MAT) Program fit into this vision of multidisciplinary exploration within the liberal arts tradition?

LEFT: *Kristin Seymour '14 reads with a young student in St. Mary's County public schools.*

*“ALL THE PROFESSORS
at St. Mary’s say ‘a good
teacher is a reflective teacher,’
and they are right. Why
would you go through an
entire day teaching the same
lesson the same way?”*

MICHAEL ENNIS ’09 (MAT ’10)

To start, the MAT Program was founded in the name of liberal arts. Prior to the MAT, St. Mary’s had an approved teacher education program that could be completed during undergraduate study. But the course-load was heavy, and students had a hard time finishing the program without overloading or taking summer classes. The department sought to improve the situation by starting the MAT program. As Professor and Chair of Educational Studies Lois Stover explains, “We decided to pursue the offering of the MAT, which meant our undergraduates could, as I always put it, luxuriate in the liberal arts buffet that St. Mary’s offers for their first four years.”

With the inception of the program, students were able to major in a subject, or two, of their choice. They could take classes because they were interested in the subject, not because it was a requirement. They had time to study abroad. All in all, they had fuller access to the essential St. Mary’s experience. The undergraduate certification was replaced with a minor in educational studies, a prerequisite for the MAT, which includes six classes and extensive field work. These courses cover topics such as special education, English language learners, educational psychology, and the state of American education. By the time students are deciding to continue into the MAT or not, they have experience in the classroom and know if teaching is their calling. This creates cohorts of MAT students who are experienced and determined to become great teachers.

The program is 11 months long, and results in an accredited master’s degree. Over the 11 months, the students in the cohort switch between periods of coursework on campus and time at an in-school internship. The program allows for people with varied interests and at various points in their lives to pursue their dream of teaching. Each cohort is made up of about 30 students, most of whom are fresh out of undergrad, but joined every year by several older “career changers.” Eric Jackson ’04 (MAT ’10), for example, went directly into a job in architecture after graduating from St. Mary’s, but quickly learned that a desk job wasn’t for him. An art major, he was drawn to teaching because it “represented an opportunity to be



Caption to come. Ovidem rem imus, sae sint earum tet que eos nos dolupidis maximpos squiam voluptam, faaculpa dolorae.

active, creative, and continue learning.” He chose to return to St. Mary’s for the MAT. “I knew that the quality of a St. Mary’s education would be superior to one that I would receive elsewhere,” he says. “While the MAT program did require a rigorous commitment that made it impossible to maintain a full-time job, it did allow me the opportunity to focus solely on my long-term goal.” Eric currently teaches art in St. Mary’s County.

The MAT is built on a conceptual framework of “Research, Relationships, Reflection.” These three pillars guide the students through their experience, both on campus and in the schools, and influence the curriculum of the program. The students value these concepts, as they put a unique spin on teacher education. Paul Christian ’07 (MAT ’08), a music teacher in St. Mary’s County, explains: “Research is too often forgotten or put on the back burner, but I think it plays a huge role in my growth as an educator.” The program’s vision emphasizes “schools and schooling, the self as teacher, the role of education in creating a more equitable society, and the process of teaching and learning more broadly conceived outside of the traditional pre-K-12 classroom setting.” The MAT’s view of teaching

and teacher education is heavily informed by the liberal arts, as it is complex, multi-dimensional, and experiential. Students of the MAT come to see teaching in a unique way, through their experience in diverse classrooms, their personal research endeavors, and the guidance of an experienced faculty.

Within the MAT, each student works full time in a school for 20 weeks. These placements are primarily in local schools, as the program has a strong relationship with St. Mary’s County Public Schools. However, the MAT offers the option of teaching abroad in places such as The Gambia, Slovenia, and Costa Rica for a portion of this classroom experience. About one third of the MAT cohort elects to do one of these “internships away.” Louis Sheppard ’10 (MAT ’11) taught abroad during the program in Costa Rica and experienced an entirely new educational system and culture. He says, “By teaching at El Carmelo in Barrio Cuba, San Jose City, my appreciation for the United States’ education system grew immensely. Before teaching abroad, there were many aspects of education and life that I took for granted.” Now a social studies teacher at Great Mills High School, Louis advises all teachers to teach abroad, and hopes to again himself someday. He continues, “Often times, we are so focused on what is going on in the United States that we forget that the rest of the world has their own children, schools, and way of life... I believe that the more teachers that study and teach abroad, the more these educators can pull the best practices and methods together and integrate them into the current educational system here in the United States.”

Another keystone of the MAT is the “teacher as researcher” project, which every candidate completes. These projects range widely based on the individual’s interests and classroom experiences, and are an opportunity for the students to explore a burning pedagogical question. Laura Swann ’10 (MAT ’11), was curious about the effect of kinesthetic movement on student motivation. Over her year in the MAT, she used two different types of lessons – active, movement-based ones, and lecture-style ones. She found that students are more motivated and engaged when the activity has



them moving around. Laura says she uses her findings from this research every day as a middle school English teacher in Frederick County. “When planning lessons and activities for the students to participate in, I always keep in mind my research on kinesthetic activities,” she says. “The students always look forward to lessons that involve movement, whether it is performing a play they wrote, collaborating to create new projects, participating in vocabulary games that involve competition, or visiting stations around the room to answer questions.” Currently, Laura is working with a team of teachers to write a new curriculum for Frederick County. She claims that her liberal arts background has given her an edge in this position. “I am aware of how we can incorporate other disciplines into the English/Language Arts curriculum,” she says. “Having a strong background in the liberal arts helps me to plan lessons and units in accordance with the other teachers, so our lessons are more meaningful as they relate to one another.”

The graduates of the MAT program at St. Mary’s become innovators in the field and leaders at their schools within their first few years of teaching. Michael Ennis ’09 MAT ’10

*“RESEARCH IS TOO OFTEN
forgotten or put on the
back burner, but I think
it plays a huge role in my
growth as an educator.”*

PAUL CHRISTIAN ’07 (MAT ’08)

Caption to come. Ovidem rem imus, sae sint earum tet que eos squiam voluptam. Uplatquias sit et faaculpa dolorae labori.

works at a “turn-around” middle school in Prince George’s County, where he is the department chair for social studies. He credits the pillars of the MAT program for his success. “I am constantly trying to allow me to be me in my classroom. I do not get to let my personality shine through if I do not build a relationship with my students. The students that I have the best relationship with are the students that learn the most and have the most fun in class.” He continues, “All the professors

at St. Mary’s say ‘a good teacher is a reflective teacher,’ and they are right. Why would you go through an entire day teaching the same lesson the same way? First of all, I get bored; second of all, the students get bored; and third of all, each class is different and requires different things.”

The MAT, in tandem with St. Mary’s liberal arts values, prepares students for the reality of teaching, while equipping them to teach effectively and compassionately, to solve problems creatively, and to generate positive change in their communities. Their in-depth field experience, their research, their careful mentorship, their technology skills, and their commitment to social justice in education puts them ahead of the game as they begin their teaching careers. But these aren’t the only things that set the MAT at St. Mary’s apart from other programs. Mike Ennis claims, “I have encountered people from other programs from other colleges, and the biggest difference I can tell is the sense of community. I talked to many MATers when applying for jobs, and they have always helped me and given me advice. The greatest difference and advantage to St. Mary’s is the community it builds.” ♦

CSD *at* 10

THE CENTER FOR THE STUDY OF DEMOCRACY PASSES THE DECADE MARK

The Center for the Study of Democracy was founded as a joint initiative of St. Mary's College of Maryland and Historic St. Mary's City, the site of Maryland's first capital. The purpose of the Center is to explore contemporary and historical issues associated with democracy and liberty in national and international contexts. The Center provides a forum for presentations by government officials, journalists, and scholars; publishes scholarly writings on subjects of civil governance; encourages and supports public participation in political processes; and engages undergraduate students in study and research on related subjects.

BY LEE CAPRISTO, EDITOR

IN 1999, A COMMITTEE, REPRESENTING PEOPLE FROM THE COLLEGE and Historic St. Mary's City and chaired by Professor of Sociology Helen Daugherty, authored the original proposal for the Center. Susan Grogan, professor of political science and then-head of the history and social sciences division, vetted the proposal through faculty review.

With faculty backing, President Maggie O'Brien presented the proposal to the Board of Trustees and Governor Parris Glendening, who was fascinated by the idea. At his urging, the College and Historic St. Mary's City jointly submitted the final proposal later that same year. It laid the framework for an independent Center that honored the 17th-century democratic aspirations in St. Mary's City but also spoke to democratic aspirations in the nation and elsewhere. Marty Sullivan, then-director of Historic St. Mary's City, was on board for this partnership effort. Other early

advocates of an independent Center included College trustees J. Frank Raley, Andrew Goodpaster, and Thomas Penfield Jackson. Raley credited President O'Brien with understanding that "students will live in a society that will be interacting with the world...and citizens' understanding of democracy is critical to the vitality of the nation."

Three factors in the design of the Center helped to set it apart from other College attempts at study centers:

1. Contributions by faculty to the core ideas of the Center
2. Directors of the Center and faculty associated with the Center were accountable for establishing and running the Center and for soliciting donations and securing grants to create a sustainable base.
3. The Center's Board of Advisers actively assists in connecting the Center to other institutions around Maryland and the United States. Connections and networking help bring exemplary speakers and scholars to the College through the Center.

It was the Board of Trustees that said the Center must be self-supporting. It could not use public funds. Fundraising efforts began in 2000, but after almost two years of effort, there still weren't funds enough to launch the Center. All that changed when 9/11 occurred.

Terry Meyerhoff Rubenstein and her father made a lead gift of \$250,000 to make the Center a reality. A member of the College's Board of Trustees at the time, 9/11 convinced her of the international need to understand democracy and civil society: "[People] could learn how a democracy really was created in America, because I suspect that a lot of people don't know and they don't really understand what civil society is and they don't understand the basic tenets of what creates a democracy. It's not just capitalism; it's far more complicated than that." (from dissertation by Kelly A. Grady, Ph.D. candidate at University of Pennsylvania, 2007)

The Center for the Study of Democracy made its debut on Heritage Day, April 27,



In 2007, Zach Messitte (left) and Michael Cain (center) with students Robin Ricks, Jennifer Rudgeby, and Michael Rohrs, testified on House Bill 366, proposing to close colleges on election day and encourage professors and students to work the polls.

"I am proud to have served as the first director of the Center and I congratulate St. Mary's College and everyone involved. Ten years is a long time and those first few years were just incredibly exciting to be able to develop and shape a new project with so much potential to impact students and the community. The Center's great strength was and continues to be the strong support from faculty and trustees, who give their time, resources and scholarship to help make an impact on the civic awareness of St. Mary's students."

ZACH MESSITTE

2002. The first director was Zach Messitte, a Ph.D. candidate at NYU and a seasoned internationalist. Messitte had previous experience in the United Nations, with the Senate-selected Committee on Intelligence. He also had public relations savvy as a producer at CNN and as press secretary on Capitol Hill to U.S. Senator David L. Boren (D-OK). With Messitte running things on the ground and faculty advisers assisting with programming,

the reputation of the Center began to be established. A well-connected advisory board recruited an impressive range of policymakers and intellectuals, including Pulitzer Prize-winning Civil War historian John McPherson, the Center's first visiting scholar. Ben Bradlee brought Bob Woodward, Robin Wright, Richard Cohen and Tony Kornheiser. As word spread that the Center was hosting interesting talks given by interesting people, success bred success. To this day, the Center's visiting lecturers and scholars typically lunch with faculty and students, lecture in a class and hold Q&A session with students, then give a

public lecture in the evening.

With a growing reputation and valuable co-curricular programs that benefitted students, larger grants became a possibility. The Center received its first National Endowment for the Humanities "We the People" grant in 2004, assisted by letters of support from members of the advisory board and from then-Governor Ehrlich to the NEH review board. The \$500,000 matching grant awarded to the Center provided stabilizing financial support to the fledgling Center. Additional generous financial backing came from Board of Trustee members Katharine Russell and Gail Harmon. Joint gifts from Trustee Tom Daugherty and faculty advisory committee member Helen Daugherty have helped sustain and support the Center's mission. Today the Center for the Study of Democracy has raised over \$4 million with over \$2 million it endowed, thanks to six grants and hundreds of individual donations.

In its 10-year operation, the Center has had two directors, Zach Messitte and Michael Cain, and an interim director, Todd Eberly (assistant professor of public policy). Messitte brought a focus on Maryland politics, commissioned occasional papers on Maryland history, managed the Mellon international exchange program, started an internship program in Annapolis, and began a working relationship with The Patuxent Partnership. Students joined the Center's work by starting St. Mary's Votes! to encourage voter registration.

ALUMNI CONNECTION



CLOCKWISE FROM TOP: *Ehenda ut mos maximus et quod moluptiunt ratiani magnatem ni nis consed quibus dem re volutem porepud hento molorer cicipistiae parum. Ehenda ut mos maximus et quod moluptiunt ratiani magnatem ni nis consed quibus dem re volutem porepud hento molorer cicipistiae parum. Ehenda ut mos maximus et quod moluptiunt ratiani magnatem ni nis consed quibus dem re volutem porepud hento molorer cicipistiae parum. Ehenda ut mos maximus et quod moluptiunt ratiani magnatem ni nis consed quibus dem re volutem porepud hento molorer cicipistiae parum.*

“The Center, by bringing in speakers with different political perspectives, has provided St. Mary’s students with important connections to Washington and Annapolis. I believe it has also inspired a new generation of St. Mary’s students to take up work in politics and policy. Working with our dedicated faculty advisory board members and trustees, our community has been able to build a self-sustaining set of programs that contributes to the curricula and provides important opportunities to our students. It is an honor to be a part of this and help build it.”

MICHAEL CAIN

Messitte left the directorship in 2007 to become dean of University of Oklahoma’s College of International Studies and William J. Crowe Chair in Geopolitics. Now president of Ripon College in Wisconsin, Messitte plans to create a center for politics and governance modeled after the Center for the Study of Democracy.

Michael Cain took over as director of the Center in 2007, and has pursued a wide range

of programs with The Patuxent Partnership (whose executive director is Bonnie Green ’74). Together with Science Applications International Corporation, they host an open-to-the-public annual defense forum to discuss defense concerns and their impact on global society.

Cain’s interest in international politics and emerging democracies (he was a government consultant in Tajikistan in 2010 and a Fulbright Scholar in China in 2011), keeps the international focus of the Center alive, by helping to secure U.S. ambassadors, foreign dignitaries and current policymakers to discuss the position of the U.S. in the world. Cain also has crafted the Center’s newest offering – a democracy fellows program – which will allow faculty members at St. Mary’s College to assist the Center while producing public scholarship in areas covered by the Center.

During the last five years, the faculty has launched a democracy studies minor and the Center has established hallmark programs which benefit the College and the community:

- The Benjamin Bradlee Distinguished Lecture in Journalism has had Tom Brokaw and Gwen Ifill (TV news journalists) as guest lecturers.
- The Sterling Lecture in Law and Politics has brought to campus Mike McConnell (former director of national intelligence), Bruce Riedel (security expert and former adviser to four presidents), and Jane Harmon (president of the Woodrow Wilson International Center for Scholars).
- The Distinguished Visiting Scholars Program has included Civil War historian John McPherson.
- The Annual Legislative Wrap Up is a popular campus event each spring, particularly for students who have interned in Annapolis or are part of the student legislative committee.
- The William Donald Schaefer Internship Program run by the Center has grown from a single legislative internship in Annapolis to include three summer internships in other areas of government and public policy (see story, page 6). In 10 years, the William Donald Schaefer Internship Program has provided \$25,000 in scholarships to more than 20 undergraduates. ❖

CLASS NOTES

1967

Peggy O’Neil Gilligan [1] released her debut album, “Winter Sky” for the 2012 holiday season. A long-time volunteer for Hospice of the Chesapeake, she is donating 100 % of the album’s proceeds to the organization. Peggy, who views her album as a musical legacy for her four grandchildren, says, “I’ve been singing for as long as I remember.” You can listen to selections from the album on her website, www.peggygilliganmusic.com. Peggy and husband, **Dennis Gilligan ’67**, live in Pasadena, Md.

1969

Mary Lou Nengel Gudaitis and husband, Victor, have relocated to Weaverville, N.C., just north of Asheville, N.C. A retired Baltimore County public school librarian, she says to give her “a holler” if you’re in the area or you can email her at mlgudaitis@hotmail.com.

1975

Brian Murphy ’75, **Chip Fotheringham ’74**, **Jackie Armstrong Knipp ’75**, **Joanne Swain ’79**, and **Theresa LaValley Levy ’74** organized a St. Mary’s College ’70s lacrosse reunion party which was held at Pickles Pub in Baltimore, Md. on Oct. 6, 2012. One highlight was a photo collage of the spring 1974 Florida trip to play teams in Miami. James Fenwick, shown to the left of the collage with **Joe Harrington ’75** on the right [3], was the St. Mary’s College bus driver

who spent 54 hours driving the team all the way down and back. The whole display was given a place of honor by the front door by the pub’s owners who include **Tom Leonard ’93**, another former lacrosse player.

1977

Bonnie Manos Willow [2] is a Reiki Master/Transformative energy healer and educator who has been involved with holistic healing for 30 years. In 2000, she founded The School of Peace in Asheville, N.C. where she also teaches a Peace Ministry program. She wrote her first book, published in 2011, entitled *Love, Light & Business: Business Anatomy for Holistic Healers*. Bonnie and her husband Gary live in Asheville, N.C.

1980

Suzanne Paulkovich Hye, owner of Hye on Beads, has been named the head educator for The BeadSmith, the largest wholesale supplier to bead stores worldwide. She says that “21 years of selling to my own customers gave me the perfect background for this job!” Suzanne lives with her family in Monroe Township, N.J.

1981

Paul Moyer is the director of athletics at McDaniel College in Westminster, Md. After graduating from St. Mary’s College, he began his career at The Catholic University of America where for three years (1983-86) he was the athletic facilities director and head men’s soccer coach. He also spent time with the Washington Bullets, Team America Soccer and Los Angeles Olympic Organizing Committee. His next moves



were for positions at Manhattanville College (1986-1990) and the University of Chicago (1990-1994). Returning to his alma mater in 1995, he was the Seahawks athletic director for six years and the men’s golf coach. His final stop before McDaniel College was Moravian College where he was athletics director for 11 years and the women’s golf coach. While at St. Mary’s College, he served as president of the Capital Athletic Conference. Paul and wife Pam have two daughters; Sydney, a senior at Boston University, and Cara, a high school sophomore. The family lives in Orefield, Penn.

1990

John Reynolds performed at St. Mary’s College Nov. 15, 2012 as part of The Twain Lecture series. A Nashville singer and songwriter, he says he’s “heavily influenced by the great American writers.” During the musical performance, St. Mary’s College Professor Ben Click provided commentary from Mark Twain’s works and **Audrey Hamilton ’08** and **Josh Barnett ’08** played backup for John and Gary Kirkland, a Missouri-based musician. John lives and works in Nashville, Tenn.

1991

Dan Schiffman [4] joined Northwestern Mutual Life Insurance Company’s elite Forum group in November 2012. Recognized for his outstanding year of helping people achieve financial security, Dan is in the top five percent of Northwestern Mutual’s more than 6000 financial representatives. He lives in Frederick, Md.

1995

Jae Jennifer Williams Rossman [5] was the Artist House artist-in-residence at St. Mary’s College Oct. 1-14, 2012. (Shown here is one of the works she did while on campus.) After studying art history, drawing, and printmaking at St. Mary’s College, she continued her education at Brandeis University in its studio art post-baccalaureate program. While there, as part of her work-study in the library’s preservation department, she repaired books which led her to earn a master’s degree in library and information science from Simmons College. She also earned a master’s degree in modern history and literature from

Drew University. Jae joined the staff of Yale University’s Robert B. Haas Family Arts Library in 2000 and today is its assistant director for special collections. While she enjoys her career as a librarian, she has continued creating art. In 2004, she established the jenny-press (www.jennypress.com) as a way to distribute her print designs and stationery. It also serves as a forum for publishing the Book Arts Essay series. Jae lives in New Haven, Conn. with husband Corey and son Flynn, age 3.

1997

Chris Harney, head coach of the Seahawks men’s basketball team, recorded his 150th career win Jan. 7, 2013 when his team defeated Franklin & Marshall College 63-57 and made him Seahawks basketball program’s all-time wins leader. Chris has led the Seahawks to five consecutive Capital Athletic Conference (CAC) regular season titles; five CAC tournament championship titles; and four appearances in the NCAA

Division III Men's Basketball Championship Tournament. He lives in Lexington Park, Md. with wife **Carrie Dannenfelser Harney '99** and daughters Drue, Wrenn and Sloane.

1998

Dr. Michael Becraft is the assistant dean of the School of Business for Park University which has 40 campuses in 21 states as well as on-line options. He also is writing a biography of Bill Gates. Michael is based at the Fort Bliss campus and lives in El Paso, Tex.

Steven McCullough is a lieutenant commander in the U.S. Coast Guard. Currently stationed at U.S. Coast Guard Air Station Detroit in Harrison Township, Mich., he joined the U.S. Coast Guard in October 1998. He's also working on a master's degree in emergency services management from Columbia Southern University. Steven has a daughter, Avery, age 11 and lives in Clawson, Mich.

Rafia (formerly Sharon) Rebeck [6] completed a two-year training in the Hakomi method of psychotherapy in July 2011 and will receive her master's degree in counseling psychology from the University of Colorado, Denver in August 2013. She works as a counseling intern at People House in Denver, Colo., a nonprofit offering affordable care to local community members. Rafia, shown here with **Heather Davis '98** on her left, is drawn to somatic, mindfulness-based therapies and hopes to go into private practice as soon as she is able. She lives in Boulder, Colo., where the skies are blue and the sun is bright.



1999

Thomas Klemm has joined White and Williams LLP as an associate in the firm's Philadelphia, Pa. office. He specializes in reinsurance and commercial litigation matters. Dedicated to pro bono matters, Tom received the Homeless Advocacy Project Award in 2010 from the First Judicial District of Pennsylvania and was named to its "Pro Bono Roll of Honor" in 2012. He lives in Philadelphia with his wife, **Kathleen Creamer '99**, who also is an attorney.

Nichole Blancato Opkins [7] has been elected to the Advisory Neighborhood Commission for Ward 6 in Washington, D.C. Representing the residents and businesses located in the Barney Circle, Capitol Hill and Eastern Market neighborhoods, she started her two-year term Jan. 2, 2013. A graduate of the University of the District of Columbia David A. Clarke School of Law, she also works as an independent legal consultant. Nichole lives with husband, David and daughter, Tara in the Capitol Hill neighborhood of Washington, D.C.

2000

Katy Arnett has written her first book, *Languages for all: How to support and challenge students in a second language classroom* published by Pearson Education Canada. The book, a professional learning text, is targeted to classroom teachers and teacher educators in the field of second language education and grew out of research she started for her St. Mary's Project. Katy received her doctorate in second language education in 2004 from The Ontario Institute for Studies in Education of the



University of Toronto and is an associate professor of educational studies at St. Mary's College. During 2012-2013, she is a Fulbright Scholar, working with the Second Language Research Institute of Canada at the University of New Brunswick. Katy and her spouse, Todd Lyons, live in Prince Frederick, Md.

Sean Flynn is a major in the U.S. Marine Corps serving at U.S. Cyber Command at Fort Meade, Md. Initially assigned to the 1st Marine Expeditionary Force, based out of southern California, he has served as an infantry platoon commander, assistant intelligence officer, and battalion operations officer and has made four combat deployments to Iraq. Prior to his current assignment, Sean served for three years as an executive officer and a Red Team analyst at U.S. Southern Command in Miami, Fla. He lives in Washington, D.C.



Alumni from across Maryland all made the journey to the Carroll County home of **Johnnie "Funtimes" Garner '97** to celebrate his 40th birthday! From left to right: **John Smith '01, Kelly McGarvey '01, Rebecca Morris Burrell '00, Matty Shepherd '99, Leena Ghim Shepherd '99, Mandy Blaney Laurier '99, Travis Burrell '99, Devon Rothschild '01, Johnnie "Funtimes" Garner '97, and Kurt Ritterpusch '98.**

2001

Anne Seehaver Carter earned her master's in reading education from the University of Virginia with certification as a reading specialist. She lives outside Charlottesville, Va. with husband **Jeff Carter '00** and their three young children, whom she's shaping into bibliophiles and logophiles. Anne looks forward to returning to the classroom sometime in the near future.

2002

Melanie Evans Curro completed her master of science degree in childhood education at The City College of New York and teaches third grade at St. Francis of Assisi School in New York City. She and husband **Joe Curro '02**, an account executive with Business Wire, live in Astoria, N.Y.

ALUMNI CONNECTION

Neal Peckens [8] and friend, Jason Hiser went hiking in Montana's Glacier National Park in October 2012 (The photo shows Neal's tracks leading up to where he's standing with Jason in the distance.) Experienced hikers, they still managed to get stranded for four days when they lost the trail during a winter storm that dropped 18 inches of snow. After two unsuccessful attempts to find the mountain pass that would lead them back to where they started hiking, Neal and Jason hunkered down on a plateau, rationed their food and water, and waited to be rescued. They donated the \$30,000 raised for their search-and-rescue to the groups that rescued them. Neal is a veterinary cardiologist. He, wife **Deborah Brown '00**, who's also a veterinarian, and daughter Madison, age 1, live in Herndon, Va.

Rachael Sanford, Esquire [9] has been named partner at the Danville, Va. law firm Clement & Wheatley. A 2005 graduate of the University of Denver law school, she interned with the Colorado Legal Services in the Family and Children's Unit, clerked for Lerman & Associates, P.C., and was an Assistant Commonwealth's Attorney for the City of Danville prior to joining Clement & Wheatley in 2007. In 2012 Rachael was also named a Rising Star by Super Lawyers, a multi-state lawyer rating service, and named among the Legal Elite by *Virginia Business* magazine. She lives in Danville, Va.

2003

Alice Arcieri Bonner, Esquire was recognized by the *Maryland Daily Record* newspaper as one of 50 Leading Women for 2012-2013. The award is given

to women under age 40 for their significant career accomplishments, community involvement and commitment to inspiring change. Alice also was recognized as a 2012-2013 Rising Star by Super Lawyers, a multi-state lawyer rating service. A graduate of the University of Baltimore law school, she is a member of the Law Office of Mary G. Loker and practices in the areas of estates, trust, tax and guardianship. She and husband, Shawn, live in Baltimore, Md.

Matt Pembleton '03, has gone from taking notes in Kent Hall to having his history lectures noted by St. Mary's students. Matt joined the St. Mary's College's history faculty for the fall 2012 and spring 2013 semesters to teach American history in place of Chuck Holden, who is on sabbatical. A doctoral candidate at American University, Matt is completing his dissertation on the activities of the Federal Bureau of Narcotics from 1930-1968.

2005

Brianne Coons Carter has received her certification for teachers of English to speakers of other languages (TESOL). A history teacher at Winters Mill High School in Carroll County, Md., she now is able to assist English language learners with class content and English proficiency. Brianne also advised Carroll County's first Model United Nations Delegation. Her 15 students, represented Indonesia and Chile at The Johns Hopkins Model United Nations Conference in Baltimore, Md. Brianne and her family live in Hanover, Penn.

John Heltman works as a news reporter for Argus Media in



SHORE THING SHELLFISH

Kevin Boyle '07, Mandy Burch '01, Brian Russell '08, and Brian's father, longtime commercial waterman Sheldon Russell, started a company in 2011 called Shore Thing Shellfish, LLC located on St. George Island, Md. (www.shorethingshellfish.com). Native Marylanders with over 65 years combined waterman experience; their objective is to grow "quality sustainable oysters using the most environmentally friendly practices possible."

In December 2012, Shore Thing Shellfish, in partnership with St. Mary's College of Maryland, received an \$89,500 grant from the Maryland Industrial Partnerships (MIPS) and Maryland's Department of Natural Resources (MD DNR) to test what they believe is a more cost-effective and environmentally friendly way of growing oysters. This MIPS-MD DNR project also is notable because it's the first one to involve St. Mary's College professors, led by Professor of Biology Robert Paul, as the research half of the partnership.

The new method known as "in-situ" involves placing a temporary enclosure directly on the water bottom. Layers of oyster shells are dumped directly into the enclosure, followed by the addition of free-swimming oyster larvae which are expected to attach to the shells within two days. When that happens, the enclosure is removed and what's left behind is an in place "fertile oyster bar." The company's first test of this new method will be in summer 2013. If successful, the "in-situ" method should reduce baby oyster mortality rates, improve set rates and become a "potential game-changer" in ongoing efforts to increase oyster reproduction and commercial oystering efforts in the Chesapeake Bay and its tributaries as well as improve the water quality and health.

Kevin, Mandy and Brian (shown in the photo from left to right) are all "excited to give back to a campus and a river that were so influential in our lives."

Washington, D.C. He covers issues affecting the oil and gas commodity markets, including ongoing reform of the US financial system, litigation surrounding the 2010 BP oil spill and the controversy surrounding the Keystone XL pipeline. John was selected as a 2011 Journalism Fellow by the Fund for American Studies. He recently bought an apartment in Southwest Washington, D.C., and he is working on setting up a Frisbee golf course.

2006

Gwen Calhoon [10] finished her doctoral work in neuroscience in December 2012 at the University of Maryland, Baltimore and has joined the psychology department at St. Mary's College as a visiting professor for the spring 2013 semester. She teaches two sections of Intro to Psychology and is team teaching Intro to Neuroscience with John Ramcharitar. Gwen will begin her postdoctoral fellowship in Boston in 2014 after her fiancé

Mark McAllister '06, completes his neurology residency at the University of Maryland, Baltimore. Gwen and Mark live in Baltimore.

Janice Chan '06 and **David Clewell '06 [11]** are getting married this spring. Normally that would mean a marriage note after the wedding. However, the couple has created an unusual wedding registry worth mentioning pre-wedding. In lieu of toaster ovens and the like, Janice and David are asking for donations to two charitable organizations, one of which is their alma mater, St. Mary's College. The couple met in the fall of 2004 while doing community service. "Giving back is how we met, it continues to be a core value for us, and we would like our friends and family to give to St. Mary's in our honor." For more information about making a gift in their honor, go to <https://sites.google.com/site/clewellchan2013/registry>.

Paul D. Shinkman is the national security reporter at *U.S. News & World Report*. After graduating from St. Mary's College, he worked for two years at *The Washington Examiner* before becoming a full-time freelancer in 2009. He joined WTOP News Radio in 2010 as a reporter and social media editor. Paul lives on Capitol Hill in Washington, D.C.

2007

Clinton Gilbert is the new associate director of housing and residence life at Salisbury University in Salisbury, Md. Responsible for managing housing operations, working with public/private partnerships and supervising staff, he received his master's degree in 2009 from Salisbury. He then spent a year

LOVEFORTHEMASLINS

By Hannah Brown '13, English major

In August of last year, Thomas “TC” Maslin was mugged walking home in his DC neighborhood. He was left beaten and unconscious in Capitol Hill before he was found, several hours after the incident. After a series of brain surgeries, TC awoke from his coma. Waiting for him was his wife, Abby Sullivan Maslin '04. Thus began the long process of TC’s recovery.

To help keep their friends and family updated about TC’s progress, Abby started a blog. “LovefortheMaslins” documents the family’s experience, featuring moving posts about the difficulties and the successes. Abby writes openly about their struggles, and shares with the world their brightest moments, such as TC’s reunion with their young son, Jack, and the immensity of support the family has received from friends, family, and strangers alike.

Upon TC’s release from the hospital in November, the family moved from DC to St. Mary’s County, where both TC, who graduated from Leonardtown High School, and Abby are from. TC has made great strides in his recovery, but still suffers from aphasia which affects his speech, and difficulty with movement on the right side of his body. TC looks forward to returning to work as an energy analyst—the goal that inspires him to work towards a recovery. Abby, formerly a DC public school teacher, uses her teaching expertise to work with TC to improve his speech. “Our home has become the most remarkable classroom,” she notes on the blog. With the support of their friends, family, and community, the Maslins look forward to a brighter future. “I knew it was going to be a long, awkward, humbling road ahead and I feared we would go it alone,” Abby writes. “Every day I am reassured by your words and actions that “alone” is a feeling we will not experience.”

To read the whole story, visit LovefortheMaslins.blogspot.com.

Elizabeth Jo Mason is an archival student assistant in the International Piano Archives at the University of Maryland, College Park. She also works part-time as a contractor for the American Psychological Association’s new PsycTESTS database. She will receive her graduate degree in library and information science from the University of Maryland in August 2013. Liz lives in Baltimore, Md.

Sola Ogundele is the pre-law operations assistant at Phi Alpha Delta Law Fraternity, International in Baltimore, Md. Phi Alpha Delta is a non-profit, professional law fraternity designed to assist lawyers, judges, law school students and pre-law students. Previously, she worked for two years at St. Mary’s College as the coordinator of orientation and service programs in the Student Activities Office. Sola joins **Marlena Weiss '11**, Law Operations Coordinator, on staff at Phi Alpha Delta. Sola lives in Baltimore, Md.

2011

Michael Menninger [12] will compete in the Sept. 1-4, 2013 inaugural Red Bull Youth America’s Cup as part of the seven member American Youth Sailing Force representing San Francisco. Also competing in the same event but as members of Team America Racing representing the United States will be **John Wallace '14** and **Jacob La Dow '15**. The Youth America’s Cup is designed to groom young sailors, ages 19-24, for future America’s Cup teams. Both teams were selected by and are training under ORACLE TEAM USA, winners of the 33rd America’s Cup, and will sail the same



boats, such as this one, being used in the 34th America’s Cup. St. Mary’s College holds the distinction of having placed the most sailors from any one college on these two teams.

Laura Miller is a member of both the U.S. Women’s National Rugby Team and the Washington DC Furies, one of the oldest women’s rugby clubs in the U.S. She started playing rugby when she was 14. While at St. Mary’s College, she was a two-time All American and also started playing in 2010 with the Furies, earning Most Valuable Player as a forward her first year on the team. She also has played for the London Saracens. Laura was part of the Women’s National Team Fall 2012 Tour to Italy and France and earned her third international cap. The U.S. team beat the Italian team 34-20 but lost to the French team twice; 13-0 and 27-3. Laura is spending spring 2013 training in Colorado in preparation for the Women’s Rugby World Cup. In February, she was back on campus to run a clinic for the Seahawk women’s rugby team and talk to interested students about playing rugby.

Kathleen Zawadony was interviewed in February 2013 for the website www.inalji.com which was created for individuals looking for a library or information professional job. Kathleen, or “Kt,” graduated in 2012 from the University of Maryland College of Information Studies with her master’s in library science. While there, she became

the webmaster for iDiversity, a student group that connects students, alumni, and faculty to discuss diversity issues. In her first post-graduate job as a contract worker in a Federal government agency library, Kt provides both reference and digital services.

2012

Chris Robinson has been selected for the Department of the Navy’s three-year Naval Acquisition Intern Program. This highly competitive program is designed for young professionals to develop expertise in finance, contracting, logistics, science and engineering through a combination of on-the-job and classroom training, funded graduate education and rotational assignments at different U.S. Navy commands. Chris, a mathematics major, initially will be stationed with Naval Air Systems Command at Naval Air Station Patuxent River. In his previous job as St. Mary’s College’s annual gifts officer, he led a very successful Fall 2012 phone outreach program which raised over \$80,000 in gifts and pledges as a result of his team of student callers contacting 9300 alumni and parents over three months.

ALUMNI CONNECTION

MARRIAGES & UNIONS

Lynn Strawbridge '94 and **Royal Edmondson [1]** were married Aug. 8, 2012 at Merion Friends Meetinghouse in Merion, Penn. **Chris Redlack '92, Liz Hunter '93, John Schropp '93, Susan Ack Danner '91, Sandy Ellis Grimm '92, and David Weiskopf '93** were in attendance. The couple honeymooned in Chengdu and Chongqing in the People’s Republic of China. Lynn is a literacy specialist for Awsaj Academy; Royal works for Qatar Gas. The couple lives in Doha, Qatar.



Kyle Russell '96 and **Julia Barnes '07 [2]** were married April 17, 2010 at St. John Francis Regis Catholic Church in Hollywood, Md. and honeymooned in Tuscany, Italy. Kyle and Julia are chemists for the U.S. Navy and work at Naval Air Station Patuxent River. They live in Lusby, Md.

Jennifer McAfee Chapin-Smith '99 (nee Jennifer Chapin Harris) and **Alexi Chapin-Smith [3]** were married Jan. 5, 2013 at the Adelphi Friends Meeting House in Adelphi, Md. The couple met as students at Northwestern University, had a religious ceremony in 2006 and legally changed their last names to Chapin-Smith in 2007. Jennifer, shown on the

right, has a master’s degree in journalism and works as a writer for the Michigan House of Representatives. Alexi is a doctoral candidate in archaeology at the University of Michigan. The couple lives in Ann Arbor, Mich.

Jamie Weaver '01 and **Colin Seiss [4]** were married Sept. 08, 2012 at St. Ann Church in Arlington, Va. and held their reception at the GW Masonic Memorial in Alexandria, Va. The bride’s sister, **Jessica Richard '00** was a bridesmaid. The couple celebrated their honeymoon in Cabo San Lucas, Mexico. Jamie is a Civilian Personnel and U.S. Pacific Command analyst for the U.S. Navy in the Pentagon; Colin works for Colossal Contracting LLC. They live in Arlington, Va.

Joshua Alexander '02 and **Diana Davis [5]** were married Oct. 20, 2012 in Annapolis, Md. Members of the wedding party included **Matthew Carter '01** and **Adam Shampaine '02**. The couple honeymooned in California, in Sonoma and Napa, and on the Hawaiian islands of Kauai and Maui. Josh is the chief executive officer of RFD in Washington, D.C. The couple lives in Annapolis, Md.

Kevin Chapman '02 and **Amy Anderson '04 [6]** were married June 23, 2012, in the Garden of Remembrance at St. Mary’s College. The wedding party included **April Anderson '99, Molly Cusick '03, Chrissy Warren Mastandrea '04, Jen Lemmert '04, Greg Smith '02, Philip Mastandrea '04, Craig Stevenson '03 and Josh Wenger '03**. The couple honeymooned in Playa del Carmen, Mexico. Kevin is a systems administrator; Amy is a tax attorney. They



live in Washington, D.C.
Photo: Melissa Barrick Photography

Dr. Kristin Padukiewicz '03 and **Frederic Rust [7]** were married July 7, 2012 at St. Michael’s Church in Ridge, Md. They held their reception on the lawn at Historic St. Mary’s City’s State House. Members of the wedding party included **Sandra Nauman Gallagher '03** and **Dr. Sarah Jardeleza Winger '03**. Kristin and Rick went to Scandinavia for an active honeymoon and live in Washington, D.C.

Emily Gilbert '04 and **Douglas Olney [8]** were married Sept. 2, 2012 at the Queens County Farm Museum in Floral Park, N.Y. **Mary Nasatka '02, Mandy Wood '04, and Elizabeth Keaney '03** were in attendance. The couple honeymooned at Niagara Falls and in Toronto, Canada. Emily is working toward a career in health and nutrition; Douglas is owner/director at Tallboy Films. They live in New York City.

Megan Gilbert '05 and **Christopher DeSouza '05 [9]** were married April 21, 2012 at St. Gabriel’s Church in Washington, D.C. and held their reception at the Stroga Mansion in Adams Morgan. Members of the wedding party included **Molly MacHarris '05, Heather Kilbourne '05, E.J. Alprin '05, Brian Wolcott '05, and Ever Dinarte '05**. The couple honeymooned in the British Virgin Islands and recently moved to Chicago, Ill. Megan is senior manager of creative and marketing for National Geographic Channels International; Chris is the Midwest regional sales manager for City Eats by the Food Network.



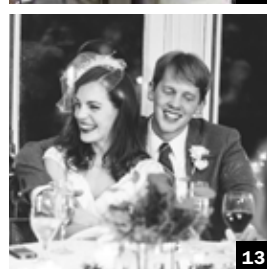
10

Kathryn Miller '05 and Robert Myers [10] were married April 27, 2012 in Gaithersburg, Md. and honeymooned in Riviera Maya, Mexico. **Jill Babson Grundy '05** and **Margo Dybalski '05** were in the wedding party. The couple works at Westat; Katie as a clinical research associate and Robert as a database developer. They live in Germantown, Md.



11

Amy Stancavitch '05 and **Mitch Stanton '05** [11] were married Oct. 5, 2012 at the Elkridge Furnace Inn in Elkridge, Md. Members of the wedding party included **Brad Newkirk '04**, **Elan Jenkins '04**, **Josh Hunter '02**, **Alun Oliver '04** and **Whitney Fahrmann '05**. Over 30 alums were in attendance. Amy is a kindergarten teacher at Baltimore Highlands Elementary School; Mitch is a store manager/design consultant for Chesapeake Tile & Marble's downtown Baltimore location. The couple lives in Baltimore's Federal Hill neighborhood.



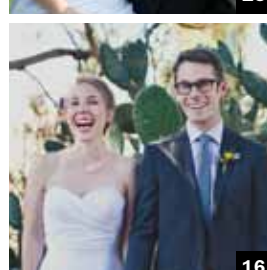
13

Kate Turner '05 and **Joe Scritore '12** were married Sept. 29, 2012 at Flora Corner Farm in Mechanicsville, Md. **Steven Turner '09**, brother of the bride, was in the wedding party. The couple honeymooned in the Outer Banks and had a blast paddle boarding and parasailing. Kate is a technical writer for Booz Allen Hamilton; Joe is an engineer for Naval Air Systems Command. They live in Lexington Park, Md.



15

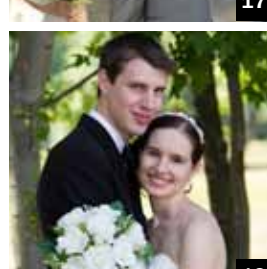
Peter Young '05 and **Adrienne Foerster '06** [13] were married Dec. 1, 2012 at St. Anselm's Abbey and held their reception at the Josephine Butler Parks



16



17



18

Center, both in Washington, D.C. Brothers of the bride and groom, **Matt Foerster '10** and **Gabriel Young '13**, were members of the wedding party. The couple honeymooned in Hawaii. Peter is the assistant director of admissions at St. Anselm's Abbey School, where he also coaches the lacrosse team. Adrienne is the managing editor at Resources for the Future. They live in Washington, D.C.

Elizabeth Allen '06 and **Trevor Garbow '14** were married Sept. 15, 2012 at the Woodlawn Manor in Sandy Spring, Md. **Erica Tokar '05** and **Rebecca Wickizer '06** did readings during the ceremony; **Nicola Tilley Manulik '05** helped her daughter, Evie Manulik, as flower girl; and **Michael Addabbo '03**, Liz's brother-in-law, played music for the ceremony. The couple honeymooned on Paradise Island in the Bahamas. Liz, an occupational therapist for the Montgomery County public schools and Trevor, assistant golf course superintendent for the Washington Golf and Country Club, live in Chevy Chase, Md. with their dog, Sprocket.

Hannah Lichtenstein '07 and **Douglas Graves '15** were married June 18, 2011 in their Warwick, Rhode Island backyard. Members of the wedding party included **Hilary Wiech '07**, **Megan Hawn Stauffer '07**, and **Melissa Humphrey '07**. The couple honeymooned in Maine. Hannah is a full time research assistant and a part time graduate student in behavioral and social sciences interventions at Brown University. Douglas works part time as a behavioral therapist at the J. Arthur Trudeau Memorial Center and



12



14

is working on his degree in history/secondary education. The couple lives in Warwick, R.I.

Katie Tate '07 and **Chris Kallmyer '07** [16] were married Sept. 29, 2012 in Petaluma, Calif. Jackie Paskow, St. Mary's College professor emerita, was the wedding officiant. **Ben Austin-Docampo '08** was a wedding guest. The couple will honeymoon in Hawaii in June. Katie is a philanthropy assistant for The Nature Conservancy. Chris is an artist who works in sound installation, composition, performance, and electronic music. He spent 2012 as an Artist in Residence at the Headlands Center for the Arts. Katie and Chris live in Los Angeles, Calif.

Lauren Gill '09, **MAT '10** and **Cameron Leischer '10**, **MAT '11** [17] were married June 30, 2012 in the Garden of Remembrance at St. Mary's College. Members of the wedding party

included **Mariela Mata-Bautista '09**, **Laurie Hammond '09**, **Vic Lipscomb '09**, **Erin Voigt '09**, **Melinda Swain '09**, **John Campbell '09**, **Nathan Schwalje '09**, **Shane Eyer '10**, **Brian Csernak '09**, **Danny Morris '10**, and **Matt Miller '11**. The couple honeymooned at Ambergris Caye in Belize. Lauren teaches 7th grade math at Spring Ridge Middle School; Cameron is a 9th grade English teacher at Leonardtown High School. They live in Lexington Park, Md.

Adrienne Milner '11 and **Jonathan Hieb '18** were married June 23, 2012 in Pomfret, Md. **Melanie Kokolios '11** was maid of honor; **Christina Luciano '12** was a bridesmaid; and **Nicholas Hieb '06** was a groomsman. Adrienne is the assistant to the director, Maryland Sea Grant at the University of Maryland; Jonathan is an electrician with Commercial Power, Inc. They live in Adelphi, Md.

ALUMNI CONNECTION

BIRTHS & ADOPTIONS

To **Thomas Haas '92** and **Wendy Couchoud Haas**, a son, **Zane Robinson [1]**, born Nov. 25, 2012. He joins big brothers Ethan, age 11; Gus, age 6; and Liam, age 4; and big sister Anja, age 3. Zane's proud aunt is **Amy Couchoud '99**. Tom and Wendy are both patent attorneys; Tom of counsel for Thompson Hine LLP and Wendy, who specializes in plants and biotechnology, with the U.S. Patent and Trademark Office. The family lives in Crownsville, Md.

To **Kyle Russell '96** and **Julia Barnes Russell '07**, a daughter, **Sydney Maria [2]**, born Oct. 23, 2012. Kyle and Julia work for the U.S. Navy as chemists at Naval Air Station Patuxent River. The family lives in Lusby, Md.

To **Doug Shipley '96** and **Melissa Shipley**, a son, **Ryan Jacob [3]**, born Oct. 11, 2012. Doug is an independent consultant and adjunct college professor. Melissa is a pediatric ophthalmologist in private practice. The family lives in Marvin, N.C., a small town just outside of Charlotte, N.C.

To **Elizabeth Rose Mohundro '98** and **Steve Mohundro**, a son, **Theodore Lianming [4]**, born April 30, 2009 in Guangzhou, China and adopted on Nov. 5, 2012. Elizabeth works as an international adoption supervisor for World Association for Children and Parents, a Seattle, Wash. adoption and humanitarian aid agency; Steve is a

web content editor for Prowess Consulting. The family lives in Seattle.

To **Debra Kemp Fleischer '99** and **Richard Fleischer**, a son, **Benjamin Thomas [5]**, born Sept. 26, 2012. Debbie is an environmental policy consultant at Abt Associates; Rich is an emergency management consultant at Booz Allen Hamilton. The family lives in Silver Spring, Md.

To **Jim Haske '00** and **Liz Haske**, a son, **Bryce Matthew [6]**, born Sept. 13, 2012. He joins big sister Amelia Renee, age 2. Jim, a middle and high school social studies teacher, and Liz, an early elementary teacher, have taught in international schools for over ten years. Now in their fourth year teaching in Jakarta, Indonesia, they've also taught in Qatar, China and Syria. Jim says the family plans to live abroad for many years to come, experiencing adventure and world cultures.

To **Michael Pennington '00** and **Elizabeth Pennington**, a son, **Joshua Henry [7]**, born Dec. 3, 2012. Joshua joins his big brother James, age 3, who is loving his role as mommy's and daddy's helper. Michael is a business analyst at T. Rowe Price; Elizabeth is a teacher at Notre Dame Preparatory School. The family lives in Kingsville, Md.

To **Robert Miller '02** and **Jennifer Marbourg-Miller '02**, a daughter, **Evelyn Marie [8]**, born Aug. 5, 2012. Rob and Jenn both work for the government at Naval Air Station Patuxent River. The family lives in Lexington Park, Md.



To **Christy Faggio Neal '02** and **Andy Neal '03**, a son, **Zachary William [9]**, born Jan. 3, 2013. He joins big sister Madelyn, age 6. **Julie Faggio '10** is the proud aunt. Christy is a physician assistant with Comprehensive Women's Health in Silver Spring and Glendale, Md.; Andy teaches mathematics and coaches varsity baseball at Frederick Douglass High School in Upper Marlboro, Md. The family lives in Crofton, Md.

To **Brandon Hance '03** and **Meghan Faul Hance '05**, a daughter, **Julia Faith [10]**, born Jan. 2, 2013. She joins big brother Connor, age 2. Brandon works for the federal government and Meghan is a stay-at-home mom. The family lives in Annapolis, Md.

To **Kristina Sementilli Evans '04** and **Robert Evans**, a daughter, **McKenna Grace [11]**, born Friday, Jan. 13, 2012. She joins big sister Delaney Lee, age 4. Kristina is a clinical social worker

at St. Elizabeth School, a non-public school for students with special needs in Baltimore, Md. Rob is a clinical social worker at Upper Bay Counseling. The family lives in Bel Air, MD.

To **Philip Mastandrea '04** and **Chrissy Warren Mastandrea '04**, a son, **John Jefferson [12]**, born Dec. 15, 2011. Phil is an auditor for the federal government; Chrissy is a stay-at-home mom. The family lives in Bowie, Md.

To **Jessica Goldstein '04** and **Fabrizio Motta**, a son, **Giulio James [13]**, born March 12, 2012 in Savigliano, Italy. Jessica teaches English and works as a translator; Fabrizio is a palliative care doctor. The family lives in Saluzzo, Italy.

To **Brianne Coons Carter '05** and **Matt Carter**, a son, **Emmett Jude [14]**, born March 3, 2011. Emmett enjoys playing soccer, drawing and watching Ravens football. Brianne is a history teacher at Winters Mill High School in Carroll County, Md.; Matt is a Mercedes parts specialist and a sergeant in the Pennsylvania National Guard. The family lives in Hanover, Penn.

To **Lori Comegys Schmidt '05** and **Andrew Schmidt**, a daughter, **Helena Elizabeth [15]**, born Aug. 6, 2012. She joins big sister Ana, age 2. Andrew is a manager for the Society for Human Resource Management; Lori is home with the girls. The family lives in Middletown, Md.

IN MEMORIAM

Dorothy Hope Hodgkinson Grace '29, of Charlotte Hall, Md., died Dec. 6, 2012, at age 99. Born in Baltimore, Md. in January 1913, Hope came to St. Mary's Female Seminary in 1925, at age 12. She was valedictorian of her high school class and after graduation was hired by then college president Adele France to work in the campus bookstore so she could attend the newly established St. Mary's Seminary Junior College. In 1931, she moved to Washington, D.C., and worked for 32 years in the federal government, holding positions in the Treasury Department and Office of Management and Budget where she became an archivist. After her retirement in 1963, Hope and her family moved back to St. Mary's County and she volunteered at the St. Mary's County Historical Society for 41 years. Hope is survived by son, Dale; daughters, Mary Grace Mills and Suzanne Grace Bragg; brother, David Hodgkinson; seven grandchildren; and six great-grandchildren.

Mary "Molly" Warner Stephenson '40, died Dec. 9, 2012, in Arlington, Wash., at age 89. A native of Chevy Chase, Md., she graduated from West Hampton College in 1944. During World War II, she moved to New York City where she worked as an expeditor for Western Electric. After the war she applied for training as a tourist office manager but a family emergency required a career change to elementary school teacher. Molly received her mas-

ter's degree in education from George Washington University. While teaching overseas at a Department of Defense school, she met and married her husband Jim. After his retirement, they moved to Florida where Molly was actively involved in different social justice projects as well as church and community programs. Molly is survived by husband, Jim; son, Larry; daughter, Susan; and their families.

Charilla Thomas Barham '59, of Charleston, S.C., died Sept. 22, 2012, at age 72. Born in Richmond, Va., she was a long-time resident of Charleston where she served as administrative assistant to the head of school at Porter-Gaud School from 1989-2011. Charilla is survived by husband, Richard; sons, William and John; daughter, Elizabeth; her brother John; and four grandchildren.

Patricia Thompson Suit '71, of California, Md., died Jan. 22, 2012, at age 63. Born in Leonardtown, Md., she received her master's of science degree in education and curriculum from McDaniel College. Patricia began teaching middle school English and mathematics at St. John's Parochial School in Hollywood, Md. in 1984. She was one of nine siblings to graduate from St. John's and one of several family members to work there. Patricia started St. John's choral program and then its instrumental music program. In 1990, she was appointed principal but continued to teach to the upper classes. In 2001, she received the Bishop Lyons Award for Outstanding Leadership in Catholic Education by the Archdiocese of Washington. She retired from

St. John's in 2011. Patricia is survived by husband, Steve; siblings, Franny Thompson, Tism Thompson Blackwell, Benedict Thompson, Wayne Thompson, Mike Thompson, John Thompson and Sam Thompson; sister-in-law Marylou Thompson; and their families.

Karen Marlow-Bennett '79, of Hollywood, Md., died Oct. 16, 2012, at age 56. A native of Bethesda, Md., she made St. Mary's County her home after graduation. A devoted teacher at Margaret Brent Middle School for 31 years, she received the school district's "Work Hard Be Nice" award in July 2007. Karen also was a member of St. Mary's College's Alumni Council from 2008 to 2011. She is survived by husband, Charles; daughter, Jenny Bennett Conrad; sisters, Laurie Marlow Boegel, and Melissa Marlow Reid; brother, Billy; and their families.

Scott Tyrone Taylor '79, of Baltimore, Md., died Jan. 28, 2013, at age 55. A native of Baltimore, he was a gifted musician long before he attended St. Mary's College. He started playing the clarinet at age 9 and later mastered the flute, clarinet, soprano, oboe, alto, baritone saxophone, piccolo, and bassoon. As a teenager, Scott started performing with bands including the Gay Street One and Hot Flesh and taught at Baltimore's Peabody Institute and local high schools when he was 19 years old.. While a student at St. Mary's College, he played in the Jazz Ensemble and after graduation toured with bands such as Egypt, the Four Tops, and the New Century Platters. In 1997, he joined George

Clinton's Parliament-Funkadelic (P-Funk) All-Stars and played the saxophone, clarinet and flute. In February 2009, he came back to campus to play in the last reunion concert of the 1970's Alumni Jazz Ensemble directed by Bob Levy. A year later, Scott formed his own band, Scott Taylor TNT. He is survived by his mother, Queen E. Taylor; sisters, Queen T. Taylor and Alice Taylor Stewart; brothers, Reginald, Robert, Jr., and Donald; and their families.

Karen Carpenter Saunders '82, of Westminster, Md., died Nov. 17, 2012, at age 57. A native of Easton, Md., she had been a convenience store manager for many years and enjoyed collecting pigs and playing canasta. Karen is survived by husband, Frank and many brothers, sisters, family and friends.

Amy Weingartner Branigin '86, died Aug. 23, 2012, at age 50, at her parents' home in Bloomington, Ind. Born in Long Beach, Calif., she studied art and design at St. Mary's College and used her artistic talents to design her own home. Amy worked as a travel and financial agent for American Express Travel in Annapolis, Md.; and a graphic artist for the U.S. Department of Health and Human Services in Washington, D.C. and CMS Industries in Bloomington, Ind. She also volunteered at the Bloomington Montessori School. Amy is survived by son, Eric; parents, David and Carol Weingartner; brother, Peter Weingartner; former husband, John Branigin; and friend, William Pratt.

Maria Michelin Morgan '87, of Lexington Park, Md., died Nov. 14, 2012, at age 47. A native of Miller Place, N.Y., she received a master's degree from Florida Institute of Technology in 1991. Maria worked for defense contractors Eagan, McAllister Associates, Inc. and Wyle, developing software and testing for U.S. Navy aircraft programs before joining Naval Air Systems Command as a mission planning environment integrated product team lead for U.S. Marine Corps helicopter programs. Maria also volunteered at her children's schools; was active in her children's activities and her church; and served as foundation vice president for the Hospice House of St. Mary's, helping to raise the necessary funds to build and run the hospice facility. Maria is survived by husband, Todd; children, Lauren, Andrew and Megan; parents, Larry and Jessie Michelin; sisters, Lorraine and Michele; brother, Lawrence; and seven nieces and nephews.



Steven Muller died Jan. 19, 2013 at his Washington, D.C. home at the age of 85. Born in German, Muller was former chairman and member of the college's Board of Trustees (1990-2003). Muller was also formerly president of Johns Hopkins University and Johns Hopkins Hospital.

PHILANTHROPY

DON STABILE:

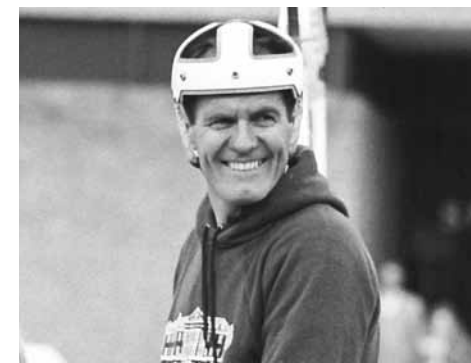
Helping to Create a Community of Scholars through Philanthropy

by Lawrence MacCurtain '11 & Karen Raley '94

THERE ARE CERTAIN THINGS THAT define the landscape of St. Mary's College of Maryland: the waterfront, the bell tower, the Georgian façade of Calvert Hall. These things and many more collectively constitute the essence of St. Mary's; they are unique, ubiquitous institutions from which our conceptions of the College are formed. Likewise, Don Stabile is a living institution, an individual who since 1980 has been just as integral and anchored to the College community as the St. Mary's River. Put simply, Don is St. Mary's, but in a way that is quiet and unassuming.

If you were to stop and ask someone what they know about Don Stabile, the first thing they would tell you is that he is the guy you find almost every day diligently peddling around campus on his bicycle. While it is true that many people bike around the College, few sport his characteristic sun hat and even fewer make the 14-mile roundtrip, coast-to-coast trek between Cedar Cove and St. Mary's City. Students will tell you that Don attends their athletic games with the regularity of a coach. Graduates will note that he always comes to Alumni Weekend, where he volunteers to help with events while catching up with former students. Indeed, he was inducted as an honorary alumnus in 2004. Similarly, colleagues will universally praise his scholarship and point to his 11 books and numerous academic articles as evidence that he is an esteemed scholar within the field of economics.

Outside the privileged few who can call Don their close friend, the rest of the St. Mary's community may be surprised at the extent of his contributions to the College. So while you may know of Don the cyclist, the Seahawk super-fan, and prolific academic, you may be surprised to learn of Don the philanthropist. He is among a notable few who fall into the category of Trustees Circle, financial donors whose individual lifetime contributions exceed one million dollars. This is the story of one the College's most generous individuals, Don Stabile.



TOP: Photo caption to come. Unt maio quae pre vel estiatecto quias et quia non eaquiae prepudae prest quaest sam. ABOVE: Photo caption to come. Estiatecto quias et quia non eaquiae prepudae prest quaest.

For 30 years, Don has embodied the St. Mary's Way, "where people cultivate a life-long quest for disciplined learning and creativity" and "where people contribute to a spirit of caring and an ethic of service." In January 2013, Don made yet another significant commitment to the College, establishing the *Don Stabile Scholars Endowed Fund*. Don's renowned spirit of caring for students was the impetus in the creation of this new scholarship fund, which will provide annual, renewable merit scholarships to incoming students, both first years and transfers, and will augment any

need-based St. Mary's grants that these students may already receive.

"Don is truly inspirational," says President Joe Urgo. "St. Mary's students come to campus with great intellectual potential and motivation, and the College offers them a variety of ways to tailor their educational experience to meet their goals and ideals, including studying abroad, interning, researching, and collaborating with faculty members. His generosity helps provide students access to a rigorous, residential liberal arts education and enables them to fully engage in St. Mary's curricular and co-curricular programs." The *Stabile Scholars* fund will help the College to recruit and retain exceptional students, provide unique living and learning opportunities, and keep its public honors promise.

A modest man, Don has been a quiet, extraordinary friend in strengthening St. Mary's community of scholars through his philanthropy. He understands that a 1:12 faculty-to-student ratio means more than just small class sizes: it connects the best faculty to the brightest students. He also knows that both faculty and scholarship support are essential for the College to maintain this best to brightest ratio, to provide transformative learning opportunities, and to educate tomorrow's leaders and innovators.

Close friends... describe him as possessing a rare intellect, a sense of humor drier than fine sherry, and most importantly, a compassion that transcends everyday notions of empathy.

The perspectives and observations of his close friends – a select few who all describe him as possessing a rare intellect, a sense of humor drier than fine sherry, and most importantly, a compassion that transcends everyday notions of empathy – best describe Don's philanthropy. This ethos is characterized by longtime colleague, Professor Emeritus Ho Nguyen, who states simply, "Don gives."

Don is the prolific scholar and professional colleague. Very much in the nature of his mentor and friend, Professor Emeritus Norton Dodge who passed away in November 2011, Don has invested in St. Mary's College's faculty, including the Dodge Awards which recognize faculty excellence and service. In addition, Don established the *Andy Kozak Faculty Contribution to Student Life Award* in 2010 to recognize faculty participation within the College community as a tribute to his student-oriented colleagues who dedicate themselves to active campus engagement. Andy Kozak, who matter-of-factly regards Don as a "damn good friend," has known him for over 28 years and says he brings a mentality of caring and compassion to the College, a veritable "good guy." Matt Fehrs, the 2011-12 recipient, personifies the award which highlights dedication to students. An assistant professor of political science, Fehrs helped to develop both a student Model UN organization and the Washington Program.

Don is the legendary teacher – infusing the curriculum with new ideas and vast experience – and cherished mentor to generations of students. The narratives, of those who had Don in the classroom, consistently paint a picture of a man who is passionate about his academic field but even more so, his students. Erik Norland '96 remembers that, "he was an irreverent and funny professor who once threw an especially turgid and boring textbook into a trashcan from across the room – Michael Jordan could hardly have done better."

In addition to being an educator, Don is also a dedicated friend to his students, someone who is willing to go above and beyond to help. Jerry Van Winter '83 fondly remembers traveling with the Economics Club to visit the New York Stock Exchange with Don, who would commandeered his cousin's Manhattan apartment to give the



Don Stabile, in his signature sun hat, and Norton Dodge, right. Norton is perhaps best remembered for his longtime work in spirited non-conformist art out of the Soviet Union. When Norton was not in Leningrad ducking the KGB, he served St. Mary's as a member of the Board of Trustees and later as professor of economics.

Ten years ago on the occasion of the annual awards convocation Don wrote, "In my years at St. Mary's College I have always been impressed by the quality of my fellow faculty members. This quality shows especially in the way they interact with students as teachers, mentors, advisers and friends." The words were in reference to the presentation of the Dodge Awards, a series of awards created by Norton Dodge to recognize the achievements and dedication of faculty. Although at the time Don's words were in deference to his fellow educators, the statement neatly summarizes the orientation of his own dedication and philanthropy emanating from his roles as a teacher, mentor, advisor and above all, friend. And to be sure, Norton was all of these things to Don and the man who inspired Don to give.

students a free place to stay.

In this vein, Don established the *Ho Nguyen Scholarship for Study in Asia* in 2008 to help St. Mary's students pursuing academic programs in Asia. Danielle Manos, the 2012-13 recipient, remarks that the scholarship support helped her "achieve a lifelong dream to visit and know

Japan" and that the opportunity "provided a life-changing experience." The study-abroad scholarship is named after Professor Emeritus Ho Nguyen, and as one of Don's closest and oldest friends at the College, Ho was honored when the scholarship was created in his honor. He recalls, "I was surprised and happy to be a part of an award dedicated toward helping students."

In recognition of his continued financial support, Maureen Silva, vice president for advancement, notes, "Don's lifetime of giving emulates the College's goal to provide transformative opportunities for students. His most recent commitment demonstrates his passion for talented students who may not otherwise be able to afford the type of education offered at St. Mary's – and heralds one of our major fundraising initiatives." Don has certainly gone the extra mile. Along with the *Don Stabile Scholars Endowed Fund*, Don also established the *Don Stabile Post Graduate Alumni Scholarship*, which is designed to benefit advanced degree-seeking St. Mary's alumni, like those pursuing various master's degrees, law school, and medical school. Together with the *Don Stabile Alumni Doctoral Scholarship*, the establishment of these new funds creates a trinity of financial aid that serves St. Mary's students from their undergraduate education to their Ph.D. programs.

Don recognizes that within the spirit of giving there is a role and opportunity for everybody in the community to contribute in their own way. He hopes that going public with his philanthropy will compel others within the St. Mary's community to give as well. Whether it be as simple as a donation to the phone outreach program, contributing to the general scholarship fund, or investing in the future of students by creating your own named scholarship endowment, the spirit of giving unites all in an "ethic of service."

Don is a true champion of the College's mission, a liberal arts education, a community of scholars – and St. Mary's students. So, the next time you catch Don quietly riding to or from Kent Hall, with his trademark sun hat, consider extending a simple "thanks." The generous smile you will get in return should suffice to demonstrate that above all, Don Stabile is a true friend to St. Mary's College of Maryland, *Professor of the College, for the College.* ♦

ALUMNI DOCTORAL SCHOLARSHIP

In 2010, Don anonymously created the Alumni Doctoral Scholarship Fund to help a growing contingent of students expand upon academic foundations laid at St. Mary's. The aim is to assist students in getting through the notoriously lean years of graduate school. One need only talk to the recipients of the Alumni Doctoral Scholarship to appreciate how the endowment helps St. Mary's students who then go on to pursue advanced degrees. Lindy McBride '03, the 2012 beneficiary, states:

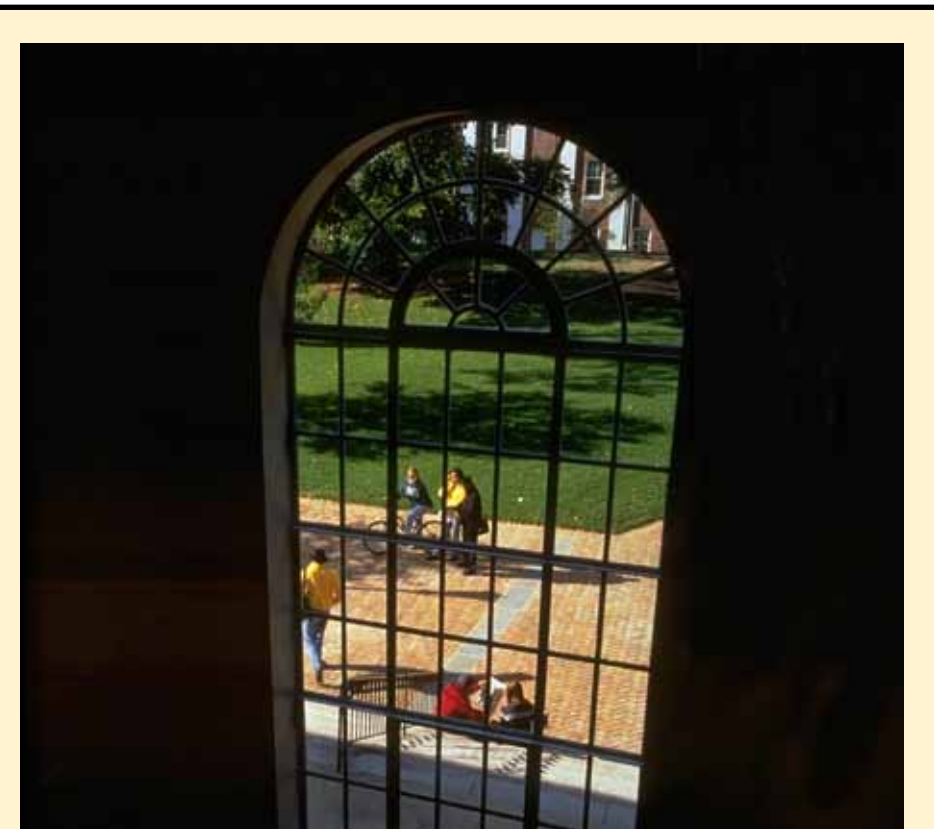
I am just beginning the second semester of my Ph.D. at Cornell University in the Applied Economics and Management Department. The courses have been challenging but very interesting. I believe [Don Stabile] sets an example for me to live up to. Through the Alumni Doctoral Scholarship, [he] is quite selflessly creating opportunities for others and asking nothing in return. This behavior is rare and inspiring; it leaves me with the responsibility and inspiration to somehow pay it forward.

Lindy's sentiments are echoed by the 2011 recipient, Drew Solyst '09, a neuroscience student who comments from Emory University:

I am incredibly grateful and honored to have received the Alumni Doctoral Scholarship. With the support of the scholarship I am able to travel to the annual Society for Neuroscience Conference to share my findings, learn about new advances in my field and meet the senior scientists leading this research. The scholarship has also been an invaluable source of inspiration in a challenging and competitive environment. With this support, I will be well-equipped to continue conducting basic and translational research to advance our understanding of neurological disorders.

Post-Graduate Scholarship Recipients (2010-2000) *This is the earlier incarnation of the Alumni Doctoral Scholarship*

- 2010 **Nicole Carlozo '08**
- 2009 **Marjorie Foley '09**
- 2008 **Alece Kaplan '05**
- 2007 **Ashley Fussell '07**
- 2006 **Kerry Graham '05**
- 2005 **Amanda LaMont Link '05**
- 2004 **Katie Painter '00**
- 2003 **Anne T. Grulich '03**
- 2002 **Karie T. Lew '98**
- 2001 **Lee-Ann Wagner '00**
- 2000 **Brigid Cahill '94**



OPENING A NEW WINDOW TO GIVING

Justine Van Wie '90 wanted to help future St. Mary's students so that they, too, could experience the caring and insightful professors,

small classes, and atmosphere that inspired her independent thinking and self-confidence. She considered ways to make an impactful, substantial gift that also met her personal financial goals. Her solution was naming St. Mary's College of Maryland Foundation as a beneficiary of her retirement plan.

With this commitment, Justine ensures that generations of students will be able to attend St. Mary's with a reduced reliance on student loans and financial burden on families. In doing so, she joins nearly 90 other alumni and friends of the College who have made

St. Mary's part of their lasting legacy. As members of the Mulberry Tree Society, these individuals are recognized for making provisions for St. Mary's College in their estate plans and other testamentary gifts. Mulberry Tree Society members play an important role in planting the seeds for the long-term sustainability and vitality of a St. Mary's College education.

There are many ways that donors can join the Mulberry Tree Society and make meaningful and significant gifts just like Justine. Information can be found at smcm.edu/giftplanning, or interested donors may also contact Michael Carver in the Office of Advancement at 240-895-3206 or mfcарver@smcm.edu.

By Michael Carver '05

GOODBYE OLD GARDEN, HELLO NEW

By Nicole Reidinger '13
psychology and philosophy major

Since 1983, the herb garden behind Anne Arundel Hall has offered a peaceful retreat for students, faculty, and anyone who happens by and sees the colorful Russian sage, or breathes in the aromatic lavender and rosemary.

Designed by Faith Jackson and installed by St. Mary's County Garden Club with help from the College, the garden got off to an inauspicious start – a hailstorm flattened it (and the College's cafeteria roof) the day after installation – but rebounded when garden club volunteers replaced drowned plants with herbs from their home gardens. The garden earned the 1983 Governor's Cup for Civic Beautification Award.



ABOVE: The storm that flattened the garden the day after it was first completed, May 20, 1983.

LEFT: Faith Jackson, designer and project manager of the original herb garden, helps plant some of its first rosemary. (1983)



This spring, the garden is being de-commissioned as the demolition of Anne Arundel Hall draws near. Members of the garden club have worked hand-in-hand to plan the new garden with the Dan Branigan, the College's director of design and construction. Those who remember the centerpiece sundial of the original garden will find it in the new one too. Construction of the three-building site (to house languages, social sciences, and archaeology labs shared with Historic St. Mary's City) begins in 2014 with expected completion in 2016. Look for the new, larger colonial-style herb garden to be dedicated sometime in 2016.



ABOVE LEFT: Plans for the layout of the new buildings to be started in 2014. The garden will be featured in front of treed courtyard, facing Route 5.

Students and garden club members work on garden maintenance, April 24, 2000.

The Early Bird Gets the Worm

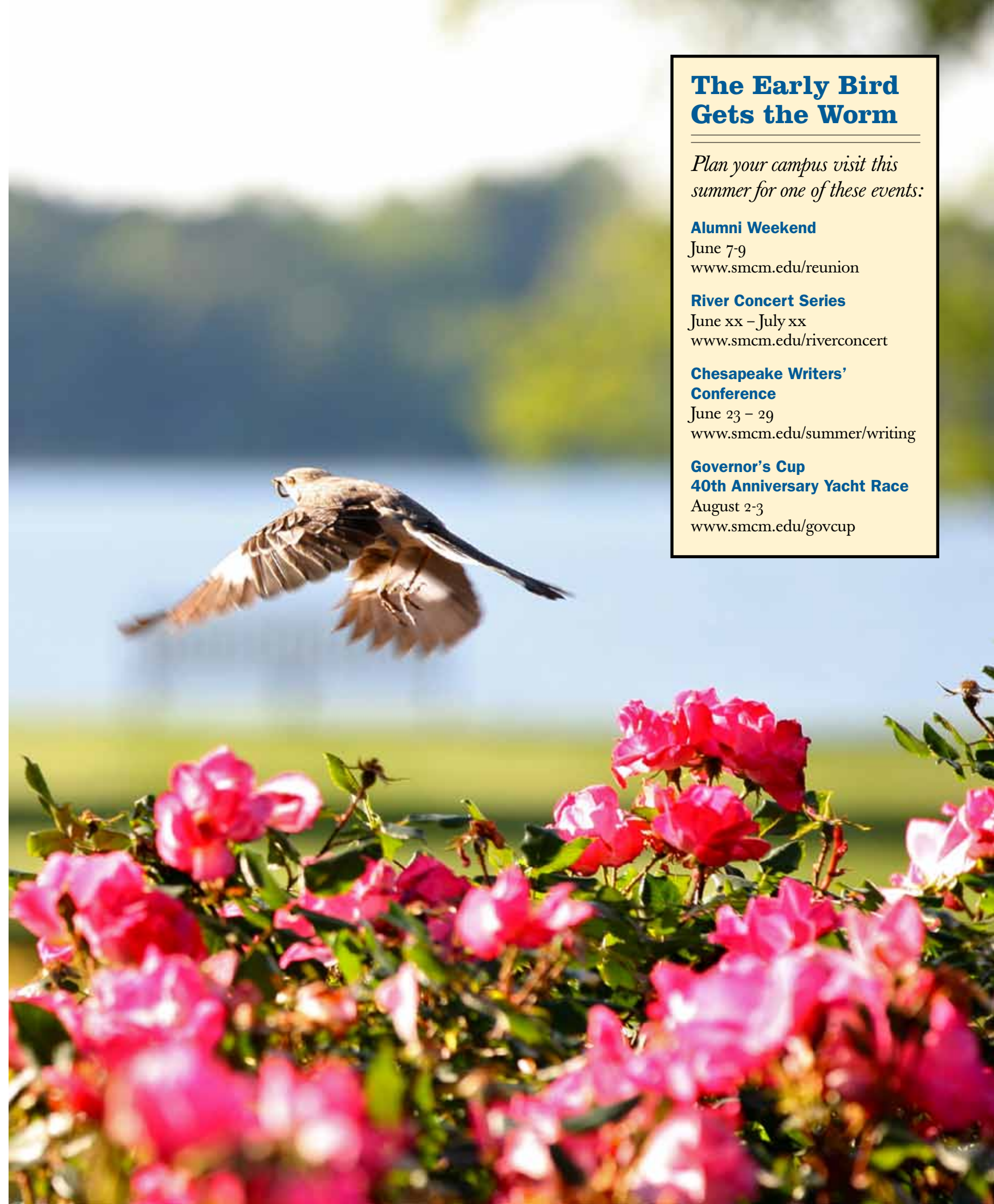
Plan your campus visit this summer for one of these events:

Alumni Weekend
June 7-9
www.smcm.edu/reunion

River Concert Series
June xx – July xx
www.smcm.edu/riverconcert

Chesapeake Writers' Conference
June 23 – 29
www.smcm.edu/summer/writing

Governor's Cup 40th Anniversary Yacht Race
August 2-3
www.smcm.edu/govcup





Alumni Weekend 2013

Pause for a moment and try to remember the first person you met at St. Mary's. Who became your closest friend and what was the craziest thing he or she did when you were in school? Who was with you the first time you walked down to the river?

With these people in mind, ask yourself... Have You Seen Me Lately?

If it's been some time since you've caught up with your St. Mary's friends, what better time to reunite than at Alumni Weekend?

June 7-9, 2013

