

# SUPPORT AND REPORTING OPTIONS FOR SEX DISCRIMINATION

Sex-Based Harassment (Quid Pro Quo, Hostile Environment Harassment, Sexual Assault, Relationship Violence, Stalking), and Discrimination based on Sex, Sex Stereotypes, Sex Characteristics, Sexual Orientation, Gender Identity and Pregnancy or Related Conditions

## CAMPUS RESOURCES

### Title IX Coordinator

240-895-4105, titleix@smcm.edu,  
Glendening Annex, Suite 190

### Public Safety

240-895-4911, smcm.edu/publicsafety

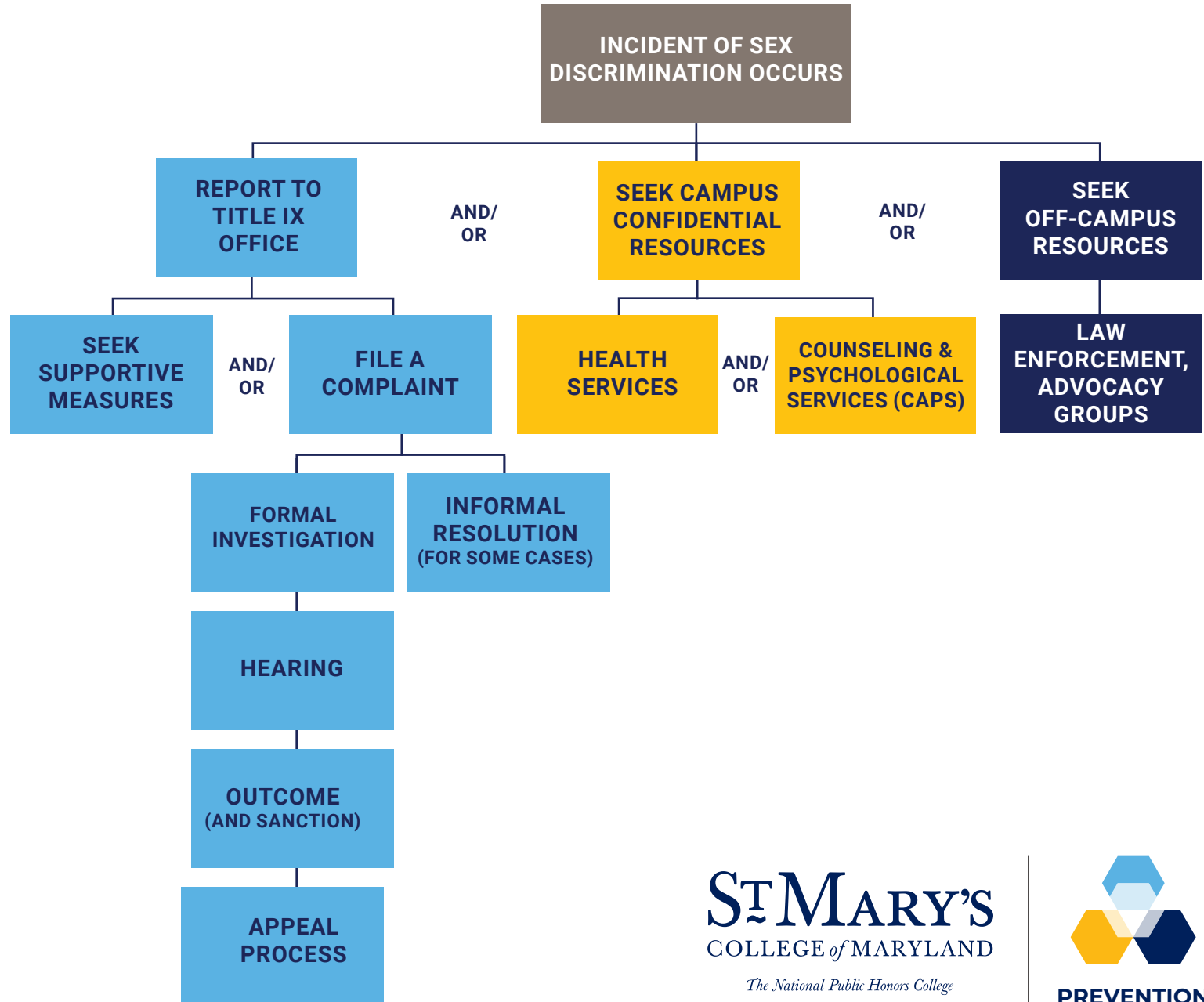
### Counseling & Psychological Services (CAPS) (confidential)

240-895-2159, smcm.edu/counseling,  
Margaret Brent Hall

### Health Services (confidential)

240-895-4289, smcm.edu/wellness,  
Wellness Center

St. Mary's County Sheriff's Office  
911 or 301-475-8008



Visit:

<http://www.smcm.edu/title-ix>  
or follow us on Instagram  
[@smcmtitleix](https://www.instagram.com/smcmtitleix)  
for more information